

CHARLOTTE APP CON
125.35 257.2
CLT D-ATIS ARR
121.15

NOTE: RADAR required.
NOTE: VXV transition for turbojet aircraft only.
NOTE: HMV and SOT transitions for turboprop/prop aircraft only.

(JALIT.LIINN3) 24193
LIINN THREE ARRIVAL

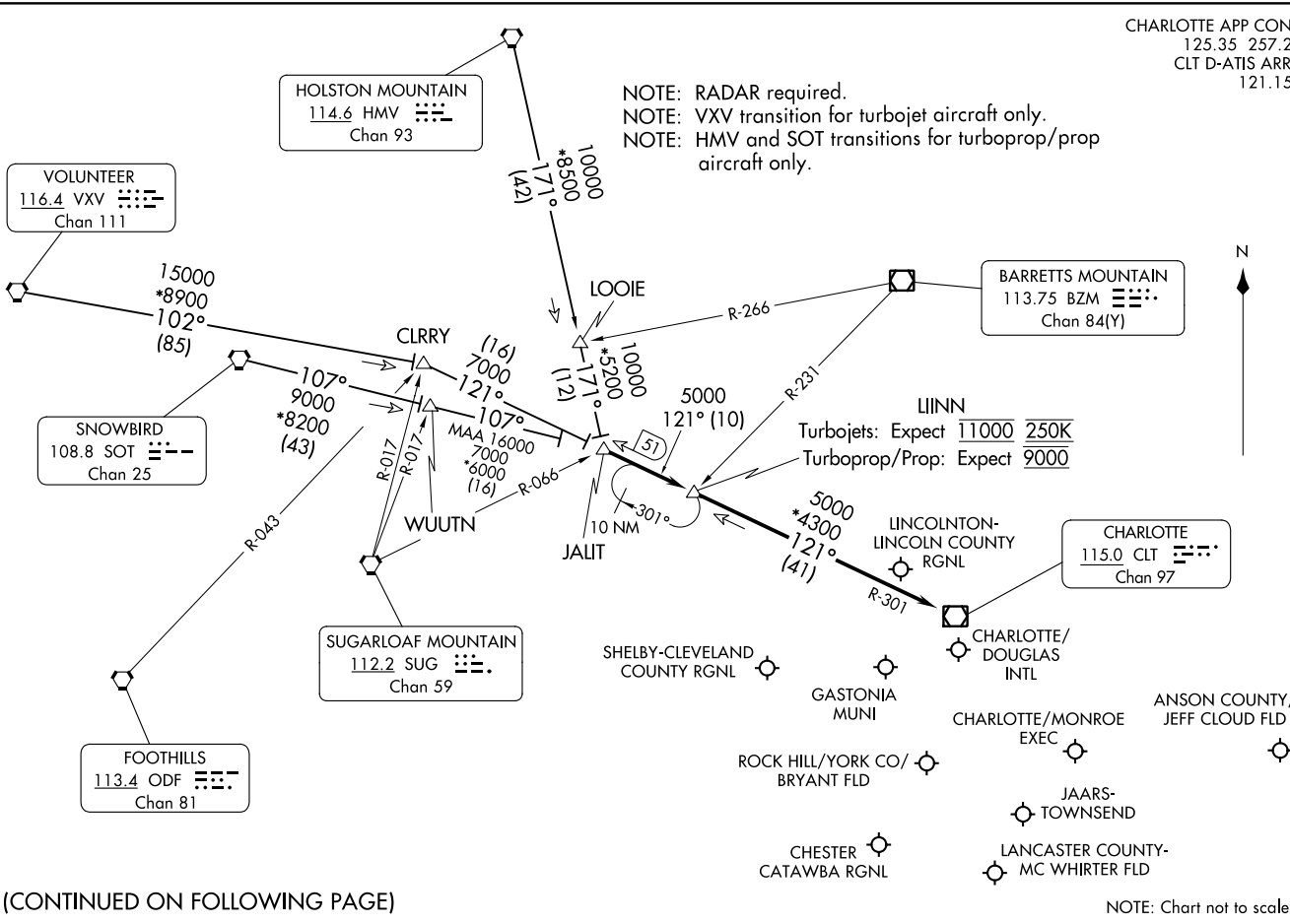
AL-78 (FAA)

CHARLOTTE, NORTH CAROLINA



LIINN THREE ARRIVAL
(JALIT.LIINN3) 08NOV18

CHARLOTTE, NORTH CAROLINA



(CONTINUED ON FOLLOWING PAGE)

NOTE: Chart not to scale.

ARRIVAL ROUTE DESCRIPTION

HOLSTON MOUNTAIN TRANSITION (HMV.LIINN3): From over HMV VORTAC on HMV R-171 to JALIT. Thence

SNOWBIRD TRANSITION (SOT.LIINN3): From over SOT VORTAC on SOT R-107 to JALIT. Thence

VOLUNTEER TRANSITION (VXV.LIINN3): From over VXV VORTAC on VXV R-102 to CLRRY, then on CLT R-301 to JALIT. Thence

. . . . from JALIT on CLT R-301 to LIINN, then on CLT R-301 to CLT VOR/DME. Expect RADAR vectors to destination airport or final approach course prior to CLT VOR/DME.

SE-2, 26 DEC 2024 to 23 JAN 2025

SE-2, 26 DEC 2024 to 23 JAN 2025