

| | | | |
|--|------------------------|---|-------------|
| WAAS CH 77500 W18A | APP CRS 183° | Rwy Idg TDZE 748 Apt Elev 748 | 8676 |
|--|------------------------|---|-------------|

RNAV (GPS) Y RWY 18L

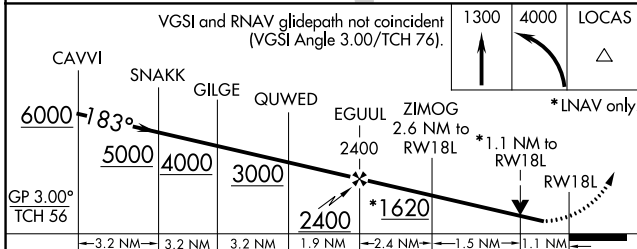
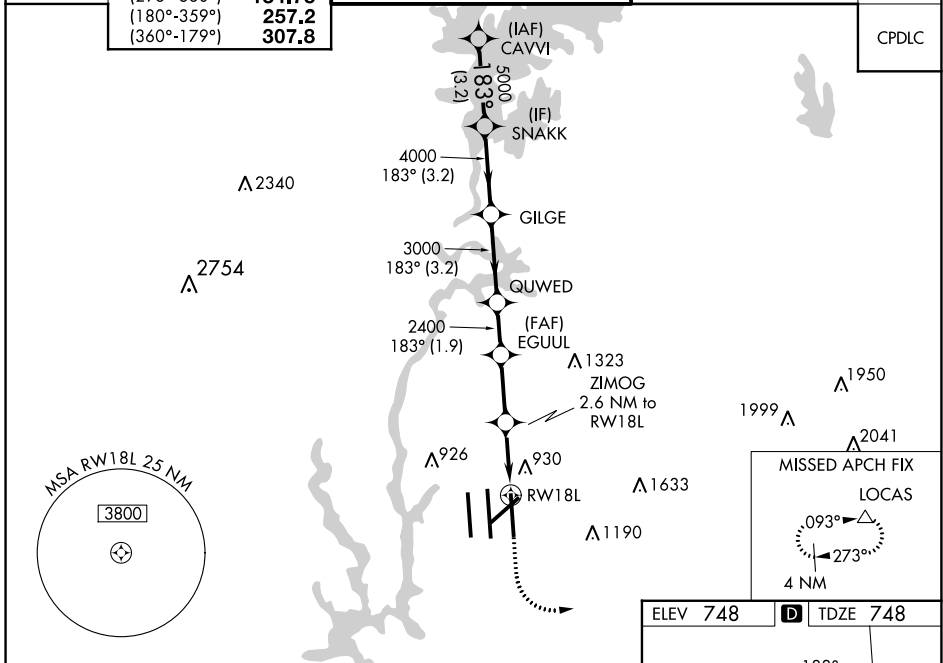
CHARLOTTE/DOUGLAS INTL (CLT)

RNP APCH.

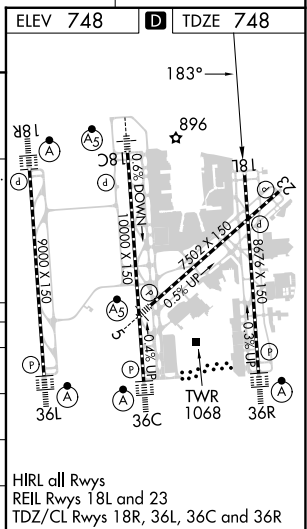
- ⚠ Circling NA at night. Simultaneous approach authorized. LNAV procedure NA during simultaneous operations. Use of FD or AP required during simultaneous operations.
- ⚠ Rwy 18L helicopter visibility reduction below RVR 4000 NA. For uncompensated Baro-VNAV systems, LNAV/VNAV NA below -11°C or above 54°C.

MISSED APPROACH: Climb to 1300 then climbing left turn to 4000 direct LOCAS and hold.

| | | | | |
|---|--|---|---|---|
| D-ATIS ARR 121.15 DEP 132.1 | CHARLOTTE APP CON (001°-119°) 128.32 (120°-295°) 120.05 (296°-360°) 134.75 (180°-359°) 257.2 (360°-179°) 307.8 | CHARLOTTE TOWER (Rwys 18L-36R) 118.1 257.8 (Rwy 18C-36C) 126.4 257.8 (Rwy 18R-36L) 133.35 257.8 | GND CON 121.8 348.6 (WEST) 121.9 348.6 (EAST) | CLNC DEL 127.15 348.6 |
|---|--|---|---|---|



| CATEGORY | A | B | C | D |
|--------------|---------|-------------|--------------|--------------|
| LPV DA | 1002/40 | | 254 (300-¾) | |
| LNAV/VNAV DA | 1216-1⅜ | | 468 (500-1⅝) | |
| LNAV MDA | 1180/55 | 432 (500-1) | 1180-1¼ | 432 (500-1¼) |
| CIRCLING | 1380-1 | 632 (700-1) | 1500-2¼ | 1500-2½ |
| | | | 752 (800-2¼) | 752 (800-2½) |



SE-2, 26 DEC 2024 to 23 JAN 2025

SE-2, 26 DEC 2024 to 23 JAN 2025