

WAAS CH 50512 W31A	APP CRS 318°	Rwy ldg TDZE 613 Apt Elev 620
--	------------------------	---

RNAV (GPS) Z RWY 31C

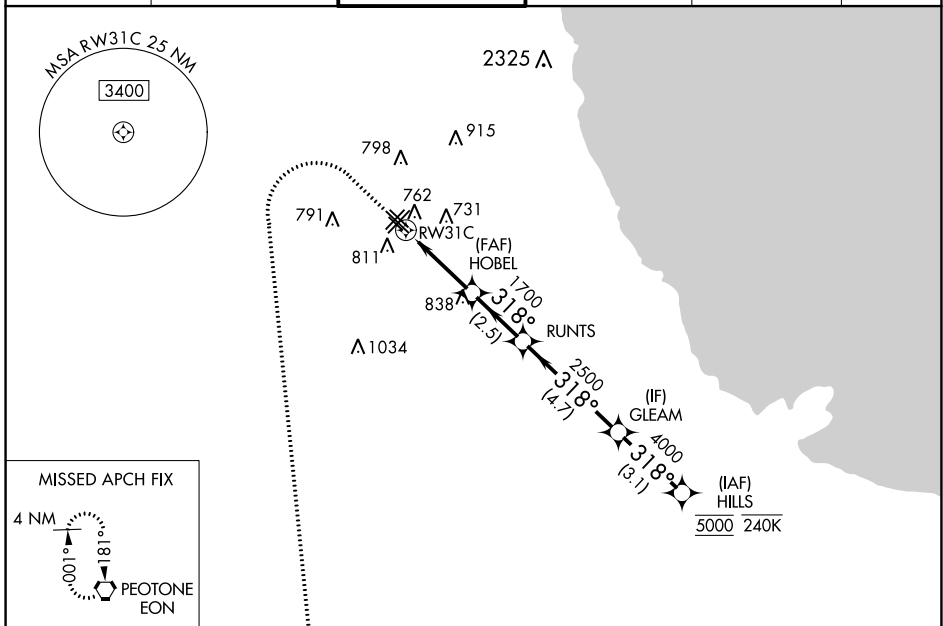
CHICAGO MIDWAY INTL (MDW)

RNP APCH - GPS.
RADAR required.

⚠ Circling Rwy 31R NA at night. Rwy 31C helicopter visibility reduction below RVR 4000 NA.
⚠ For uncompensated Baro-VNAV systems, LNAV/VNAV NA below -19°C or above 54°C.

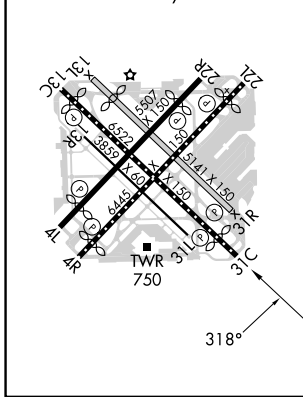
MISSED APPROACH: Climb to 1100 then climbing left turn to 2600 direct EON VORTAC and hold.

D-ATIS 132.75	CHICAGO APP CON 128.2 353.875	MIDWAY TOWER 135.2 269.125	GND CON 118.075	CLNC DEL 124.625	CPDLC
-------------------------	---	--------------------------------------	---------------------------	----------------------------	-------

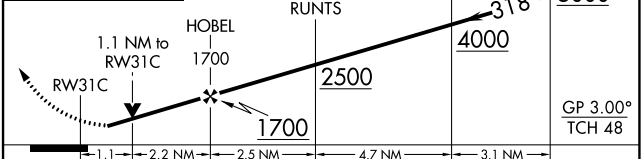


ELEV 620	D	TDZE 613
-----------------	----------	-----------------

HIRL Rws 4R-22L and 13C-31C
MIRL Rws 4L-22R, 13L-31R, and 13R-31L
REIL Rws 4R, 22L, and 31C
RLS Rws 13C and 31C



1100 2600 EON VGSI and RNAV glidepath not coincident (VGSI Angle 3.00/TCH 63).



CATEGORY	A	B	C	D
LPV DA	863/40		250 (300-¾)	
LNAV/VNAV DA	953/50		340 (400-1)	
LNAV MDA	1020/55		1020/60	
	407 (400-1)		407 (400-1¼)	
C CIRCLING	1120-1		500 (500-1)	
			1340-2	
			720 (800-2)	
			1340-2¼	
			720 (800-2¼)	

EC-3, 26 DEC 2024 to 23 JAN 2025

EC-3, 26 DEC 2024 to 23 JAN 2025