

LOC/DME I-PXP 110.7 Chan 44	APP CRS 281°	Rwy Idg TDZE 799 Apt Elev 799	6018
---	------------------------	---	-------------

ILS or LOC RWY 28

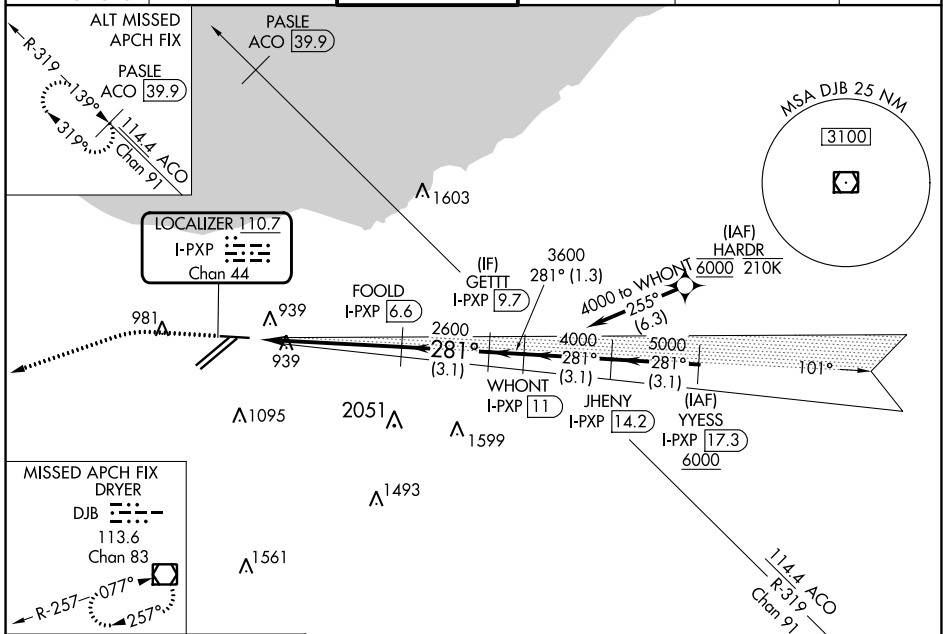
CLEVELAND-HOPKINS INTL (CLE)

RNAV 1. From HARDR: RNAV 1-DME/DME/IRU or GPS required for procedure entry. Aircraft not DME/DME/IRU or GPS equipped - RADAR required for procedure entry.
DME required.

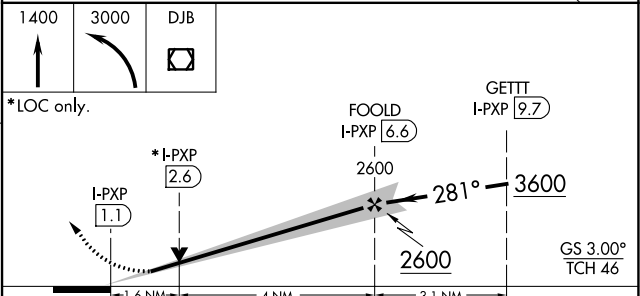
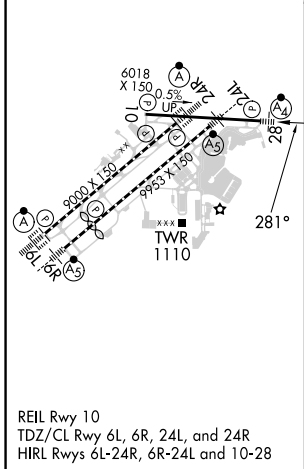
MALSF MISSED APPROACH: Climb to 1400 then climbing left turn to 3000 direct DJB VOR/DME and hold.

Circling Rwy 10 NA at night. Inop table does not apply to S-ILS 28.

D-ATIS ARR 127.85 DEP 132.375	CLEVELAND APP CON 126.55 346.325	CLEVELAND TOWER 124.5 273.45	GND CON 121.7 273.45	CLNC DEL 125.05 273.45	CPDLC
---	--	--	--------------------------------	----------------------------------	-------



ELEV 799	D	TDZE 799
-----------------	----------	-----------------



CATEGORY	A	B	C	D
S-ILS 28	999/40		200 (200-3/4)	
S-LOC 28	1340/40	541 (600-3/4)	1340-1 3/8	541 (600-1 3/8)
C CIRCLING	1420-1	621 (700-1)	1420-1 3/4	1420-2
			621 (700-1 3/4)	621 (700-2)

EC-2, 26 DEC 2024 to 23 JAN 2025

EC-2, 26 DEC 2024 to 23 JAN 2025