

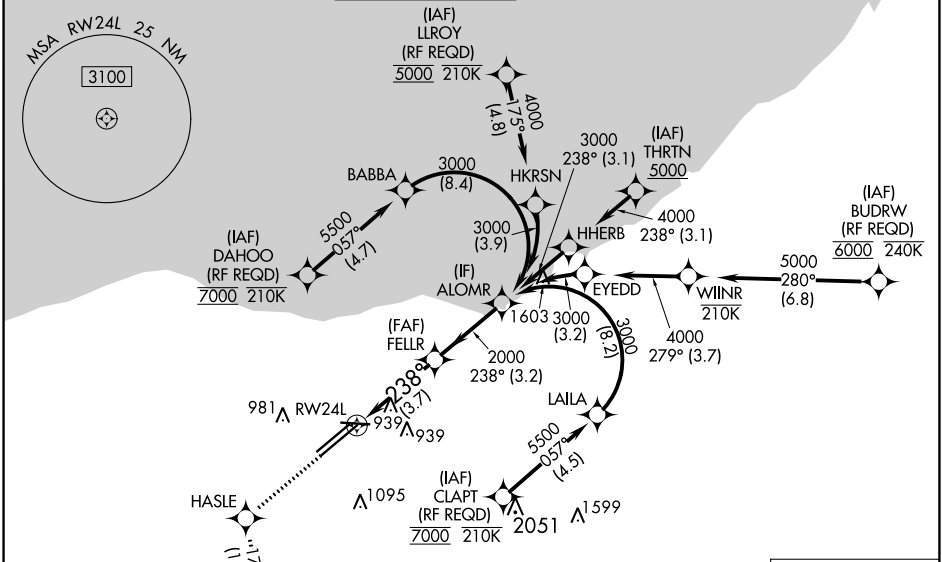
APP CRS 238°	Rwy Idg TDZE Apt Elev	9953 786 799
------------------------	-----------------------------	---

RNAV (RNP) Z RWY 24L

CLEVELAND-HOPKINS INTL (CLE)

RNP AR APCH.	MALS R	MISSED APPROACH: Climb to 3000 direct HASLE and on track 177° to SAROW and hold.
<p>▼ For uncompensated Baro-VNAV systems, procedure NA below -18°C (0°F) or above 54°C (130°F). For inop ALS, increase RNP 0.19 all Cats visibility to RVR 5500.</p>		

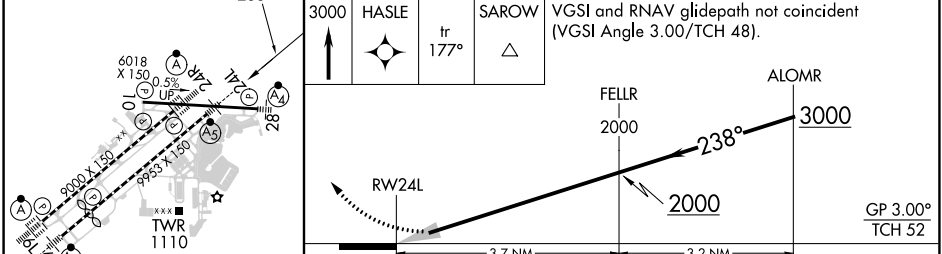
D-ATIS ARR 127.85 DEP 132.375	CLEVELAND APP CON 126.55 346.325	CLEVELAND TOWER 124.5 273.45	GND CON 121.7 273.45	CLNC DEL 125.05 273.45	CPDLC
---	--	--	--------------------------------	----------------------------------	-------



EC-2, 26 DEC 2024 to 23 JAN 2025

EC-2, 26 DEC 2024 to 23 JAN 2025

ELEV 799	D	TDZE 786			
1561	3000	HASLE	SAROW	tr 177°	△



CATEGORY	A	B	C	D
RNP 0.19 DA		1140/30	354 (400-5%)	
RNP 0.30 DA		1243/45	457 (500-7%)	

REIL Rwy 10
TDZ/CL Rwy 6L, 6R, 24L and 24R
HIRL Rwy 6L-24R, 6R-24L and 10-28

CLEVELAND, OHIO
Orig 24MAY18

41°25'N-81°51'W

RNAV (RNP) Z RWY 24L

AUTHORIZATION REQUIRED