

# RNAV (RNP) Z RWY 24R

CLEVELAND-HOPKINS INTL (CLE)

APP CRS	Rwy Idg	<b>9000</b>
<b>238°</b>	TDZE	<b>780</b>
	Apt Elev	<b>799</b>

RNP AR APCH.

▼ For uncompensated Baro-VNAV systems, procedure NA below -18°C (0°F) or above 54°C (130°F). For inop ALS, increase RNP 0.13 all Cats visibility to RVR 4500.

ALSF-2

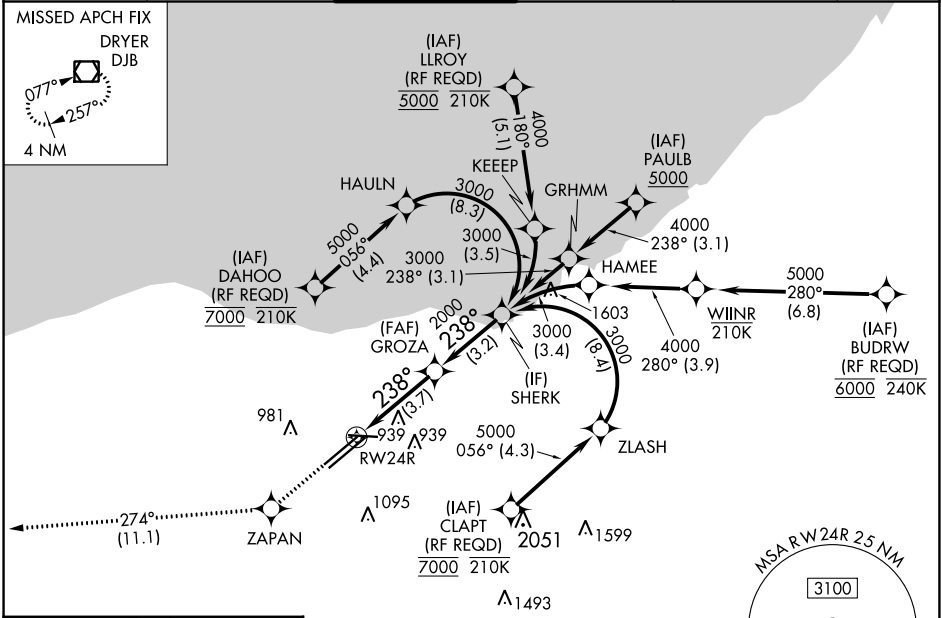
MISSED APPROACH: Climb to 3000 direct ZAPAN and on track 274° to DJB VOR/DME and hold.

D-ATIS	CLEVELAND APP CON	CLEVELAND TOWER	GND CON	CLNC DEL	CPDLC
ARR <b>127.85</b> DEP <b>132.375</b>	<b>126.55 346.325</b>	<b>124.5 273.45</b>	<b>121.7 273.45</b>	<b>125.05 273.45</b>	

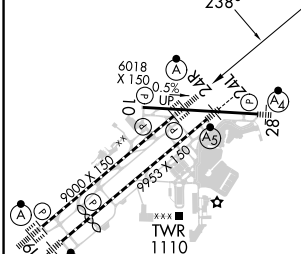
MISSED APCH FIX

DRYER  
DJB

4 NM



ELEV 799	<b>D</b>	TDZE 780
----------	----------	----------



3000 ZAPAN tr 274° DJB

VGSI and RNAV glidepath not coincident (VGSI Angle 3.00/TCH 65).

SHERK

GROZA 2000

RW24R

2000

3000

GP 3.00° TCH 55

3.7 NM      3.2 NM

CATEGORY	A	B	C	D
RNP 0.13 DA		1064/24	284 (300-½)	
RNP 0.30 DA		1176/35	396 (400-¾)	

## AUTHORIZATION REQUIRED

EC-2, 26 DEC 2024 to 23 JAN 2025

EC-2, 26 DEC 2024 to 23 JAN 2025