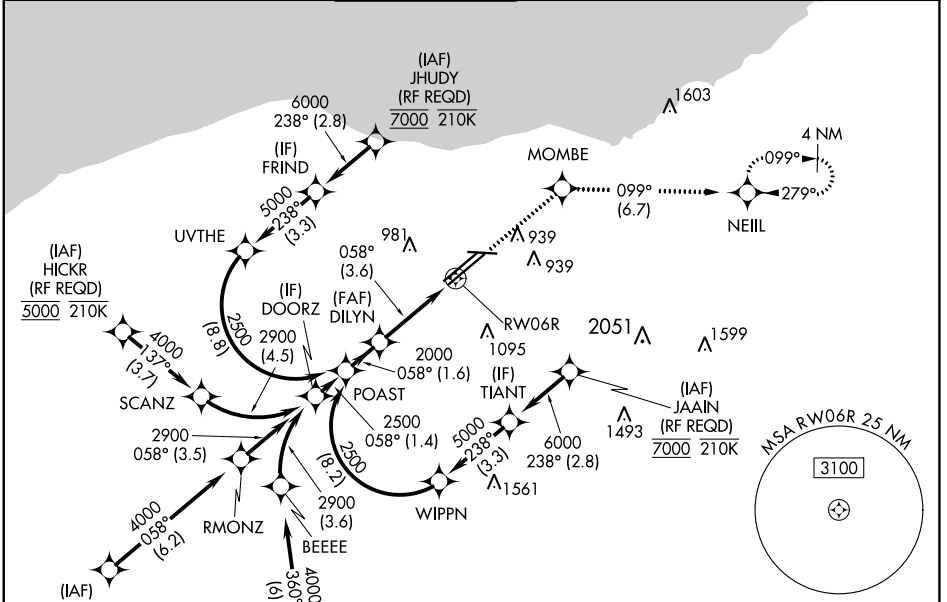


APP CRS	Rwy Idg	<b>8029</b>
<b>058°</b>	TDZE	<b>777</b>
	Apt Elev	<b>799</b>

# RNAV (RNP) Z RWY 6R

CLEVELAND-HOPKINS INTL (CLE)

<b>RNP AR APCH.</b> ▼ For uncompensated Baro-VNAV systems, procedure NA below -18°C (0°F) or above 46°C (114°F). For inop ALS, increase RNP 0.15 all Cots visibility to RVR 5500.		<b>MALSR</b> 	<b>MISSED APPROACH:</b> Climb to 3000 direct MOMBE and on track 099° to NEILL and hold. *Missed approach requires minimum climb of 270 feet per NM to 1400.		
<b>D-ATIS</b> ARR <b>127.85</b> DEP <b>132.375</b>	<b>CLEVELAND APP CON</b> <b>126.55 346.325</b>	<b>CLEVELAND TOWER</b> <b>124.5 273.45</b>	<b>GND CON</b> <b>121.7 273.45</b>	<b>CLNC DEL</b> <b>125.05 273.45</b>	<b>CPDLC</b>



EC-2, 26 DEC 2024 to 23 JAN 2025

EC-2, 26 DEC 2024 to 23 JAN 2025

See planview for multiple IF locations.				
POAST 2500 GP 3.10° TCH 58		DILYN 2000		RWY 6R 099°
1.6 NM		3.6 NM		
CATEGORY	A	B	C	D
RNP 0.15 DA*		1127/30	350 (400- <sup>5</sup> / <sub>8</sub> )	
RNP 0.30 DA		1229/45	452 (500- <sup>7</sup> / <sub>8</sub> )	
<b>AUTHORIZATION REQUIRED</b>				

