

CLEVELAND, OHIO

AL-84 (FAA)

24305

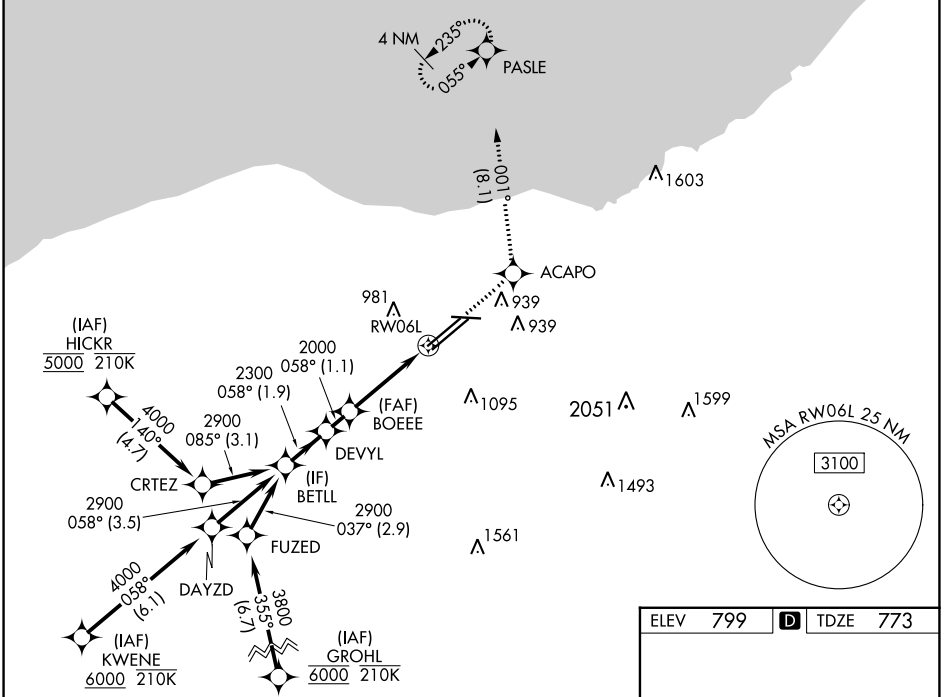
WAAS CH 56204 W06A	APP CRS 058°	Rwy Idg 9000 TDZE 773 Apt Elev 799
----------------------------------------	------------------------	---------------------------------------------------------------

RNAV (GPS) Y RWY 6L

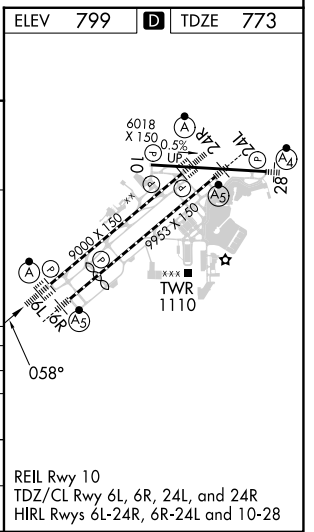
CLEVELAND-HOPKINS INTL (CLE)

RNP APCH.	ALSF-2 	MISSED APPROACH: Climb to 3000 direct ACAPO and on track 001° to PASLE and hold.
<p>▼ For uncompensated Baro-VNAV systems, LNAV/VNAV NA below -18°C (0°F) or above 54°C (130°F). Circling Rwy 10 NA at night. For inop ALS, increase LNAV/VNAV all Cats visibility to RVR 5500 and increase LNAV Cats C/D visibility to 1 3/8 SM.</p>		

D-ATIS ARR 127.85 DEP 132.375	CLEVELAND APP CON 126.55 346.325	CLEVELAND TOWER 124.5 273.45	GND CON 121.7 273.45	CLNC DEL 125.05 273.45	CPDLC
---------------------------------------------------	--------------------------------------------	----------------------------------------	--------------------------------	----------------------------------	-------



VGSi and RNAV glidepath not coincident (VGSi Angle 3.00/TCH 69).		3000	ACAPO	tr 001°	PASLE
BETLL	DEVYL	BOEEE	*LNAV only.		
2900	2300	2000	*1.3 NM to RW06L		
GP 3.00°			RW06L		
TCH 55					
	1.9 NM	1.1 NM	2.4 NM	1.3 NM	
CATEGORY	A	B	C	D	
LPV DA	973/18		200 (200-1/2)		
LNAV/VNAV DA	1120/30		347 (400-5/8)		
LNAV MDA	1260/24 487 (500-1/2)		1260/50 487 (500-1)		
C CIRCLING	1420-1 621 (700-1)		1420-1 3/4 621 (700-1 3/4)		1420-2 621 (700-2)



EC-2, 26 DEC 2024 to 23 JAN 2025

EC-2, 26 DEC 2024 to 23 JAN 2025

CLEVELAND, OHIO
Amdt 2A 21JUN18

41°25'N-81°51'W

CLEVELAND-HOPKINS INTL (CLE) RNAV (GPS) Y RWY 6L