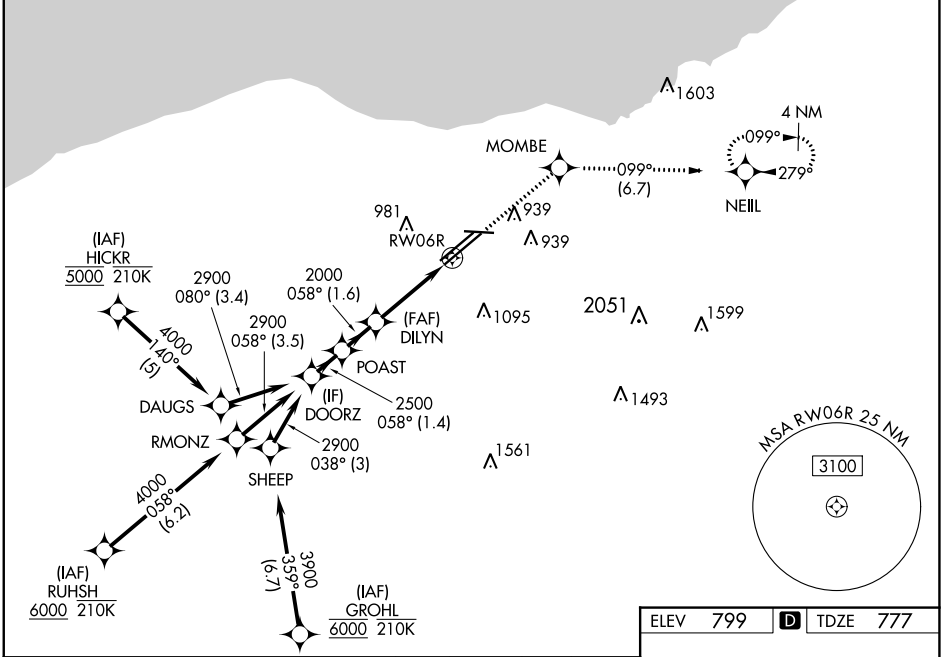


WAAS CH 81806 W06B	APP CRS 058°	Rwy Idg TDZE 777 Apt Elev 799	8029
--	------------------------	---	-------------

RNAV (GPS) Y RWY 6R

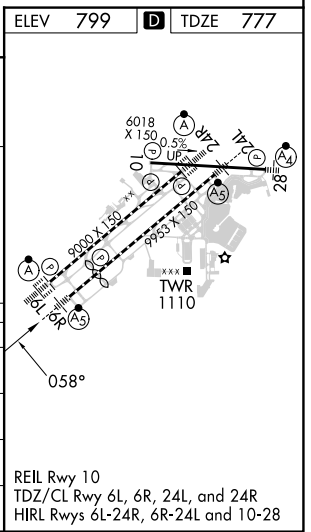
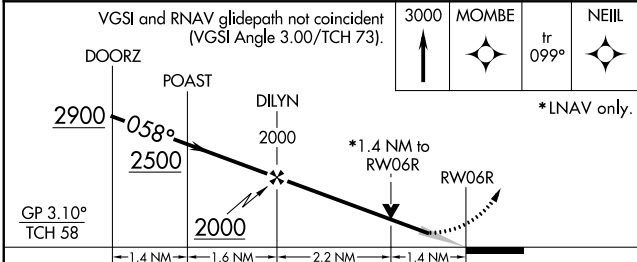
CLEVELAND-HOPKINS INTL (CLE)

RNP APCH.				MALSR		MISSED APPROACH: Climb to 3000 direct MOMBE and on track 099° to NEILL and hold.	
<p>▼ For uncompensated Baro-VNAV systems, LNAV/VNAV NA below -18°C (0°F) or above 46°C (114°F). Circling Rwy 10 NA at night. For inop ALS, increase LNAV Cats C/D visibility to 1½ SM.</p>							
D-ATIS ARR 127.85 DEP 132.375	CLEVELAND APP CON 126.55 346.325	CLEVELAND TOWER 124.5 273.45	GND CON 121.7 273.45	CLNC DEL 125.05 273.45	CPDLC		



EC-2, 26 DEC 2024 to 23 JAN 2025

EC-2, 26 DEC 2024 to 23 JAN 2025



ELEV 799	D TDZE 777																						
<table border="1"> <tr> <td>VPV</td> <td>DA</td> <td>977/18</td> <td>200 (200-½)</td> </tr> <tr> <td>LNAV/VNAV</td> <td>DA</td> <td>1227/45</td> <td>450 (500-¾)</td> </tr> <tr> <td>LNAV</td> <td>MDA</td> <td>1260/24</td> <td>483 (500-½)</td> <td>1260/50</td> <td>483 (500-1)</td> </tr> <tr> <td>C</td> <td>CIRCLING</td> <td>1420-1</td> <td>621 (700-1)</td> <td>1420-1¾</td> <td>621 (700-1¾)</td> <td>1420-2</td> <td>621 (700-2)</td> </tr> </table>	VPV	DA	977/18	200 (200-½)	LNAV/VNAV	DA	1227/45	450 (500-¾)	LNAV	MDA	1260/24	483 (500-½)	1260/50	483 (500-1)	C	CIRCLING	1420-1	621 (700-1)	1420-1¾	621 (700-1¾)	1420-2	621 (700-2)	<p>REIL Rwy 10 TDZ/CL Rwy 6L, 6R, 24L, and 24R HIRL Rwy 6L-24R, 6R-24L and 10-28</p>
VPV	DA	977/18	200 (200-½)																				
LNAV/VNAV	DA	1227/45	450 (500-¾)																				
LNAV	MDA	1260/24	483 (500-½)	1260/50	483 (500-1)																		
C	CIRCLING	1420-1	621 (700-1)	1420-1¾	621 (700-1¾)	1420-2	621 (700-2)																