

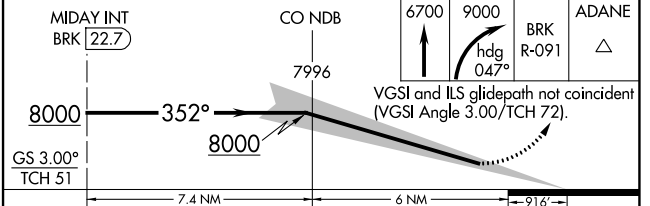
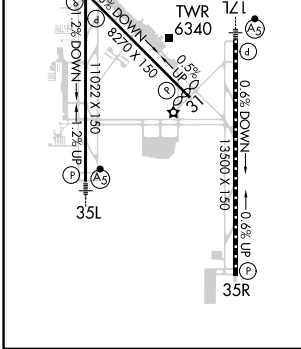
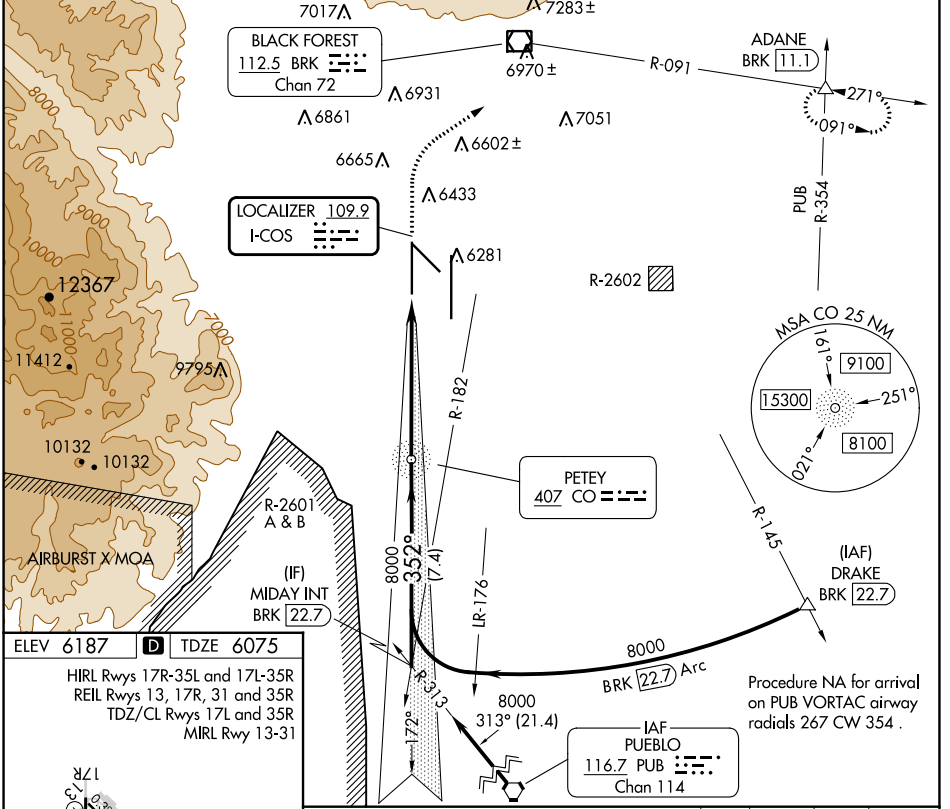
LOC I-COS 109.9	APP CRS 352°	Rwy Idg 11022
		TDZE 6075
		Apt Elev 6187

ILS RWY 35L (SA CAT II)

CITY OF COLORADO SPRINGS MUNI (COS)

<p>RADAR monitoring required when R-2601 in use. Requires specific OPSPEC, MSPEC, or LOA approval.</p>	<p>MALS R</p>	<p>MISSED APPROACH: Climb to 6700 then climbing right turn to 9000 on heading 047° and BRK VOR/DME R-091 to ADANE INT/BRK 11.1 DME and hold.</p>

ATIS 125.0 254.3	SPRINGS APP CON 124.0 257.875	SPRINGS TOWER 119.9 360.6	GND CON 121.7 348.6	CLNC DEL 134.45 363.125
----------------------------	---	-------------------------------------	-------------------------------	-----------------------------------



CATEGORY	A	B	C	D
S-ILS 35L	RA 123/12 100 DA 6175			
SA CATEGORY II ILS - SPECIAL AIRCREW & AIRCRAFT CERTIFICATION REQUIRED				

SW-1, 26 DEC 2024 to 23 JAN 2025

SW-1, 26 DEC 2024 to 23 JAN 2025