

RNAV (RNP) Z RWY 35L

CITY OF COLORADO SPRINGS MUNI (COS)

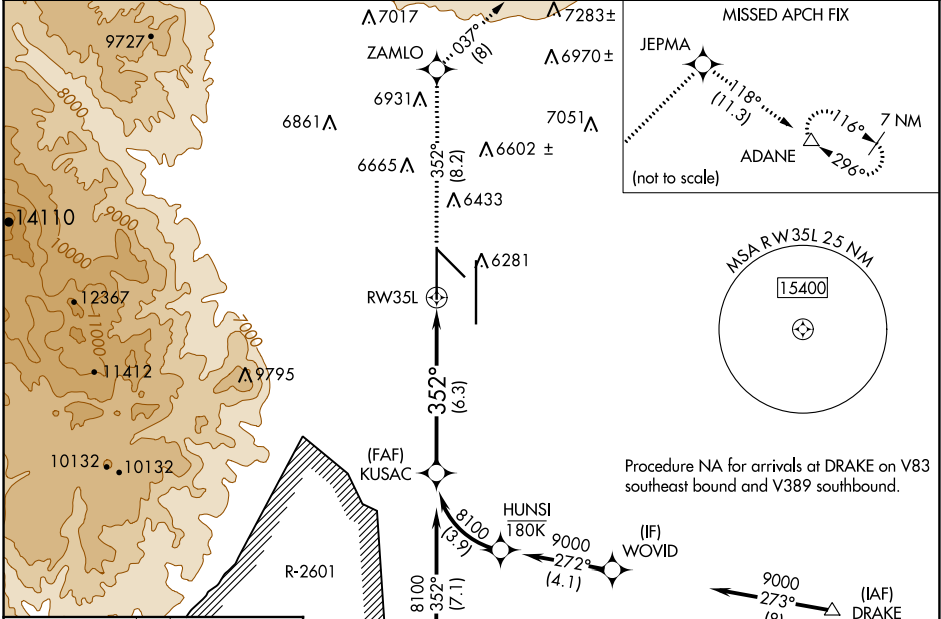
APP CRS 352°	Rwy Idg 11022
	TDZE 6075
	Apt Elev 6187

▼ For uncompensated Baro-VNAV systems, procedure NA below -21°C (-5°F) or above 45°C (113°F). GPS required. For inop MALSRS increase RNP 0.15 visibility all Cats to RVR 5000. RADAR monitoring required when R-2601 in use.

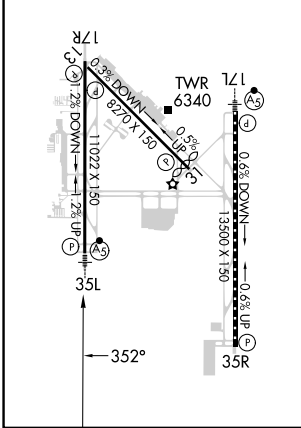


MISSED APPROACH: Climb to 9000 on track 352° to ZAMLO and on track 037° to JEPMA and on track 118° to ADANE and hold.

ATIS 125.0 254.3	SPRINGS APP CON 124.0 257.875	SPRINGS TOWER 119.9 360.6	GND CON 121.7 348.6	CLNC DEL 134.45 363.125
----------------------------	---	-------------------------------------	-------------------------------	-----------------------------------



ELEV 6187	TDZE 6075
MIRL Rwy 13-31	
HIRL Rws 17R-35L and 17L-35R	
REIL Rws 13, 17R, 31, and 35R	
TDZ/CL Rws 17L and 35R	



See planview for multiple IF locations.

KUSAC	ZAMLO tr 352°	JEPMA tr 037°	ADANE tr 118°
-------	---------------	---------------	---------------

VGSI and RNAV glidepath not coincident (VGSI Angle 3.00/TCH 72).

CATEGORY	A	B	C	D
RNP 0.15 DA		6372/30	297 (200- ² / ₃)	
RNP 0.30 DA		6427/40	352 (300- ² / ₃)	

AUTHORIZATION REQUIRED

SW-1, 26 DEC 2024 to 23 JAN 2025

SW-1, 26 DEC 2024 to 23 JAN 2025