

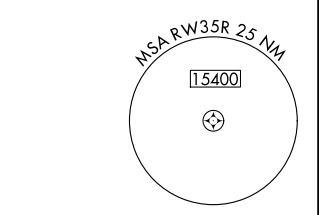
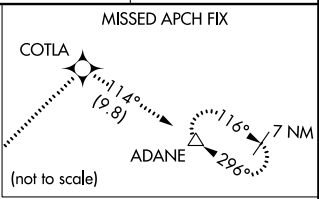
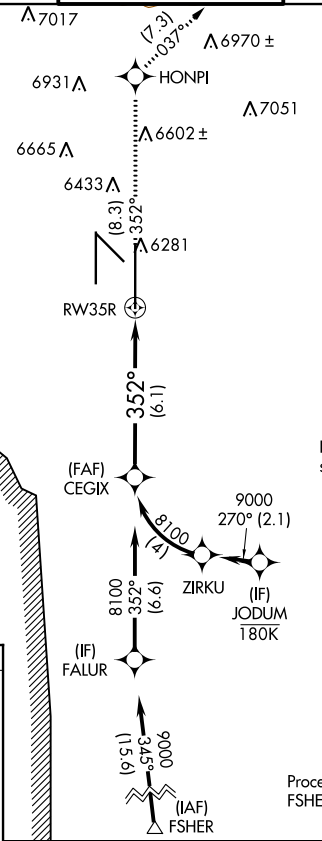
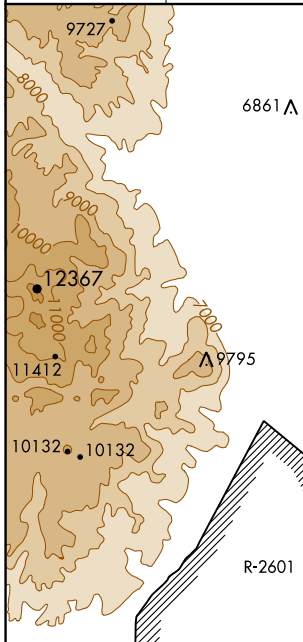
APP CRS	Rwy ldg	13500
352°	TDZE	6118
	Apt Elev	6187

RNAV (RNP) Z RWY 35R

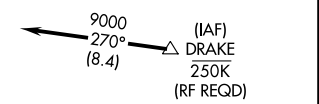
CITY OF COLORADO SPRINGS MUNI (COS)

For uncompensated Baro-VNAV systems, procedure NA below -21°C (-5°F) or above 45°C (113°F). GPS required. MISSED APPROACH: Climb to 9000 on track 352° to HONPI and track 037° to COTLA and track 114° to ADANE and hold.

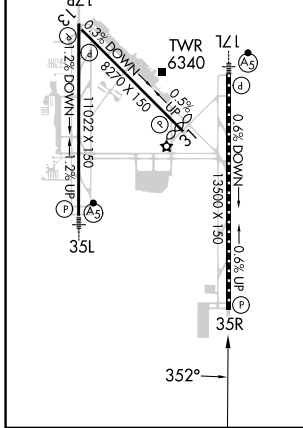
ATIS 125.0 254.3	SPRINGS APP CON 124.0 257.875	SPRINGS TOWER 119.9 360.6	GND CON 121.7 348.6	CLNC DEL 134.45 363.125
----------------------------	---	-------------------------------------	-------------------------------	-----------------------------------



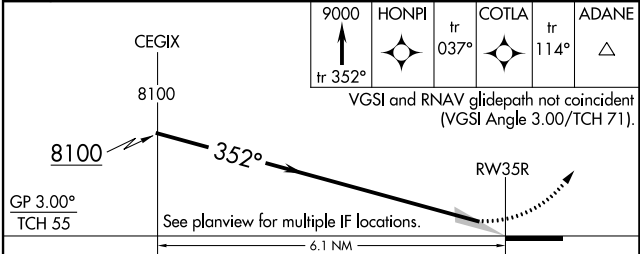
Procedure NA for arrivals at DRAKE on V83 southeast bound and V389 southbound



ELEV	6187	TDZE	6118
HIRL Rwy 17R-35L and 17L-35R			
REIL Rwy 13, 17R, 31, and 35R			
TDZ/CL Rwy 17L and 35R			
MIRL Rwy 13-31			



Procedure NA for arrivals at FSHER on V244 eastbound.



GP 3.00°	TCH 55	-6.1 NM	
CATEGORY	A	B	C
RNP 0.30 DA	6461/60		343 (300-1¼)

AUTHORIZATION REQUIRED

SW-1, 26 DEC 2024 to 23 JAN 2025

SW-1, 26 DEC 2024 to 23 JAN 2025