

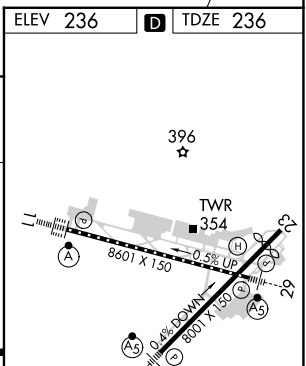
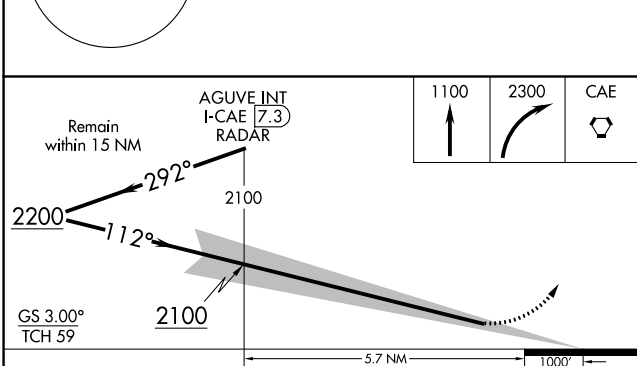
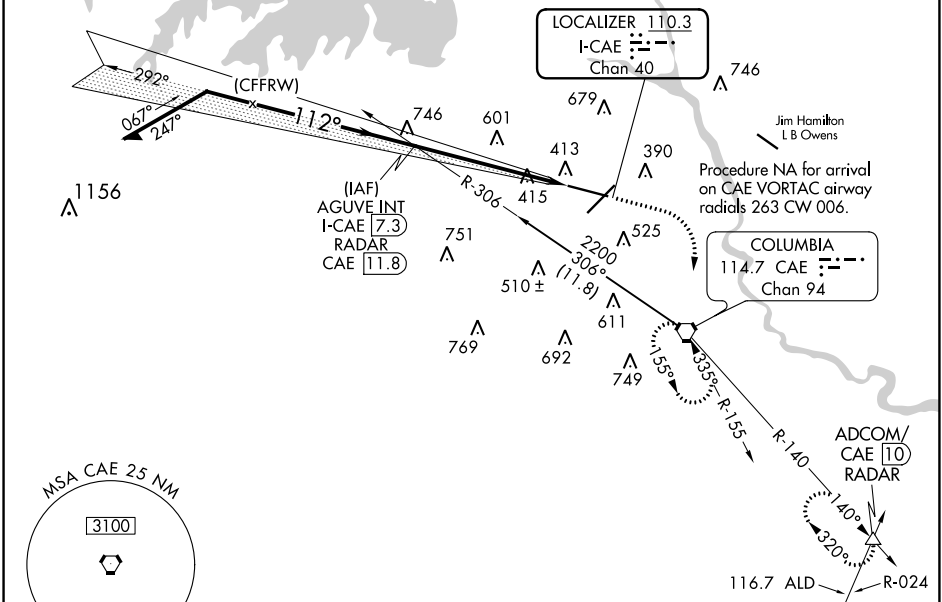
LOC/DME I-CAE <b>110.3</b> Chan 40	APP CRS <b>112°</b>	Rwy Idg TDZE <b>236</b> Apt Elev <b>236</b>	<b>8601</b>
--	------------------------	---	-------------

# ILS RWY 11 (CAT II & III)

COLUMBIA METRO (CAE)

	MISSED APPROACH: Climb to 1100 then climbing right turn to 2300 direct CAE VORTAC and hold, continue climb-in-hold to 2300. (TACAN aircraft continue on CAE VORTAC R-140 to ADCOM INT/CAE VORTAC 10 DME and hold NW, right turn, 140° inbound)		
	ALSF-2 		

ATIS <b>120.15</b>	COLUMBIA APP CON <b>133.4 285.6</b> (290°-109°) <b>124.15 338.2</b> (110°-289°)	COLUMBIA TOWER <b>119.5 257.8</b>	GND CON <b>121.9 348.6</b>	CLNC DEL <b>119.75</b>
-----------------------	---	--------------------------------------	-------------------------------	---------------------------



CATEGORY	A	B	C	D
S-ILS 11	CAT II RA 128/12 100 DA 336			
S-ILS 11	CAT III RVR 06			

**CATEGORY II & III ILS-SPECIAL AIRCREW & AIRCRAFT CERTIFICATION REQUIRED**

REIL Rwy 23  
TDZ/CL Rwy 11  
HIRL Rwy 5-23 and 11-29

SE-2, 26 DEC 2024 to 23 JAN 2025

SE-2, 26 DEC 2024 to 23 JAN 2025