

LOC I-VYK 108.3	APP CRS 292°	Rwy Idg TDZE Apt Elev	8506 227 236
---------------------------	------------------------	-----------------------------	---

ILS or LOC RWY 29

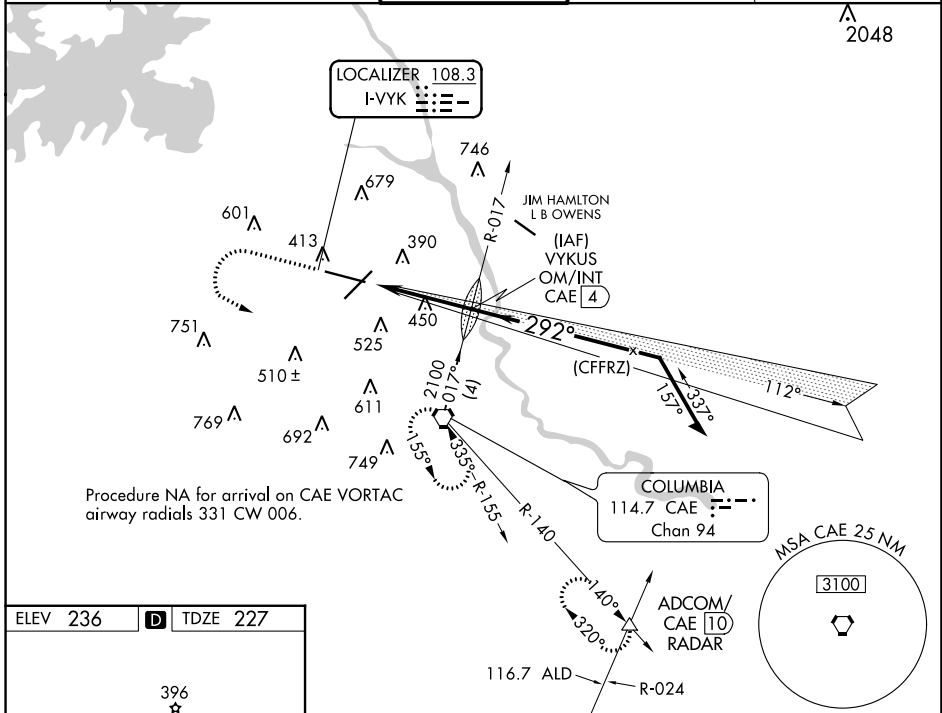
COLUMBIA METRO (CAE)

▽ For inop ALS, increase S-ILS 29 Cat E visibility to RVR 4000, and S-LOC 29 Cats C/D/E to 1½ SM.
*RVR 1800 authorized with use of FD or AP or HUD to DA.

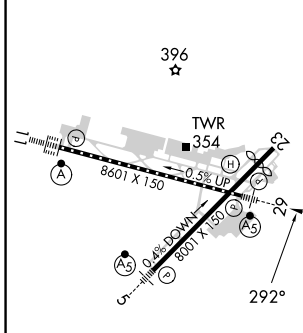
MALSR
AS

MISSED APPROACH: Climb to 1000 then climbing left turn to 2300 direct CAE VORTAC and hold, continue climb-in-hold to 2300. (TACAN aircraft continue on CAE VORTAC R-140 to ADCOM INT/10 DME and hold NW, right turn, 140° inbound).

ATIS 120.15	COLUMBIA APP CON 133.4 285.6 (290°-109°) 124.15 338.2 (110°-289°)	COLUMBIA TOWER 119.5 257.8	GND CON 121.9 348.6	CLNC DEL 119.75
-----------------------	---	--------------------------------------	-------------------------------	---------------------------



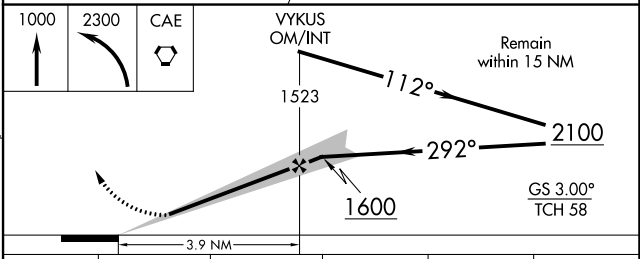
ELEV 236	D	TDZE 227
----------	----------	----------



REIL Rwy 23
TDZ/CL Rwy 11
HIRL Rws 5-23 and 11-29

FAF to MAP 3.9 NM

Knots	60	90	120	150	180
Min:Sec	3:54	2:36	1:57	1:34	1:18



CATEGORY	A	B	C	D	E
S-ILS 29*	427/24 200 (200-½)				
S-LOC 29	700/24	473 (500-½)	700/50	473 (500-1)	
C CIRCLING	740-1 504 (600-1)	860-1 624 (700-1)	1040-2¼ 804 (900-2¼)	1040-2½ 804 (900-2½)	1040-2¾ 804 (900-2¾)

SE-2, 26 DEC 2024 to 23 JAN 2025

SE-2, 26 DEC 2024 to 23 JAN 2025