

COLUMBUS, MISSISSIPPI

RNAV (GPS) RWY 31C

WAAS CH 89580 W31A	APCH CRS 315°	Rwy ldg TDZE 12,004 Arpt Elev 213
---------------------------------	-------------------------	--

AL-91 (USAF)

COLUMBUS AFB (KCBM)

RNP APCH

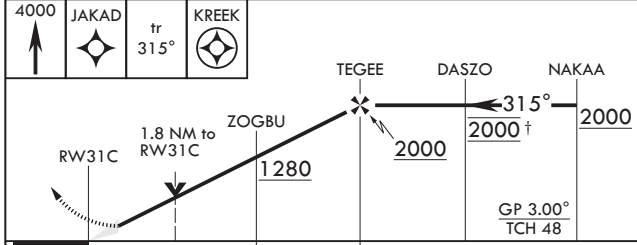
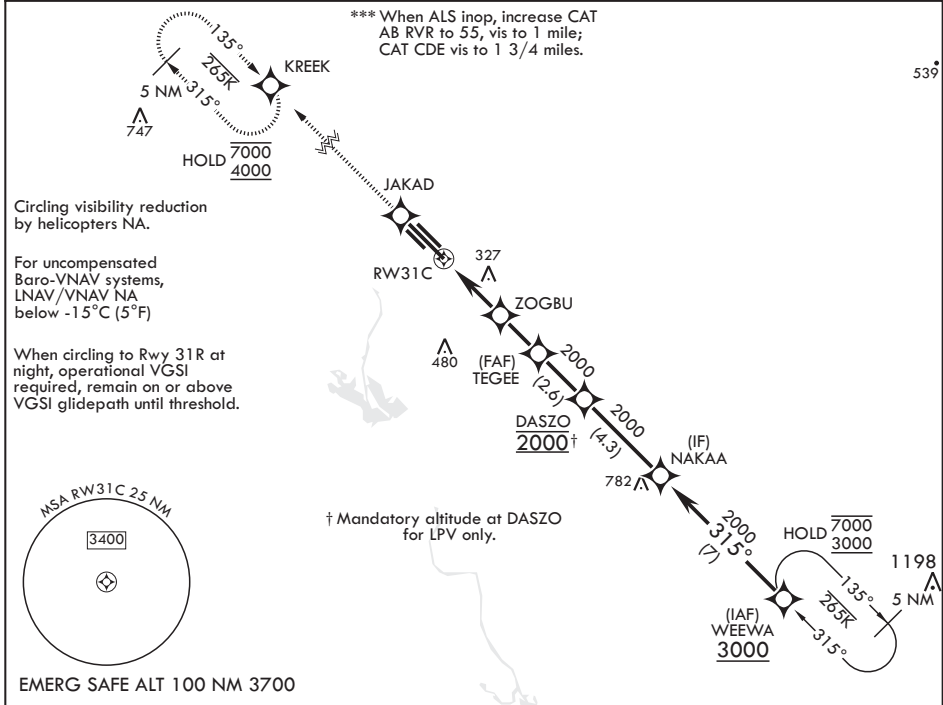
ALSF-1

MISSED APPROACH: Climb to 4000 direct JAKAD, direct KREEK and hold.

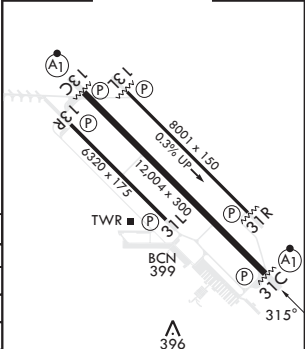
▼ * When ALS inop increase RVR to 40, vis to ¼ mile.
** When ALS inop, increase vis to 1 3/8 miles.



ATIS* 115.2 273.5	APP CON* 126.075 239.25 N 134.55 350.3 SE 135.6 323.275 SW	TOWER* 126.65 379.925	GND CON* 121.9 275.8	CLNC DEL* 269.55
-----------------------------	--	---------------------------------	--------------------------------	----------------------------



ELEV 218 TDZE 213



CATEGORY	A	B	C	D	E
LPV DA*	413/24	200	(200-½)		
LNAV/VNAV DA**	671/45	458	(500-¾)		
LNAV MDA***	840/24 627 (700-½)	840-1¼ 627 (700-1¾)	880-2 662 (700-2)	1240-3 1022 (1100-3)	
☐ CIRCLING	840-1 622 (700-1)	840-1¼ 622 (700-1¾)	880-2 662 (700-2)	1240-3 1022 (1100-3)	

HIRL Rwy's 13C-31C, 13L-31R
MIRL Rwy 13R-31L

COLUMBUS, MISSISSIPPI

33°39'N - 88°27'W

COLUMBUS AFB (KCBM)

Amdt 4 07SEP23

RNAV (GPS) RWY 31C

SC-4, 26 DEC 2024 to 23 JAN 2025

SC-4, 26 DEC 2024 to 23 JAN 2025