

COLUMBUS, MISSISSIPPI

# RNAV (GPS) E

APCH CRS <b>090°</b>	Rwy Idg TDZE Arprt Elev	N/A N/A <b>218</b>
-------------------------	-------------------------------	--------------------------

AL-91 (USAF)

COLUMBUS AFB (KCBM)

RNP APCH-GPS	MISSED APPROACH: Climbing right turn to 3000 direct JOLLI and hold or as directed by ATC.
--------------	---

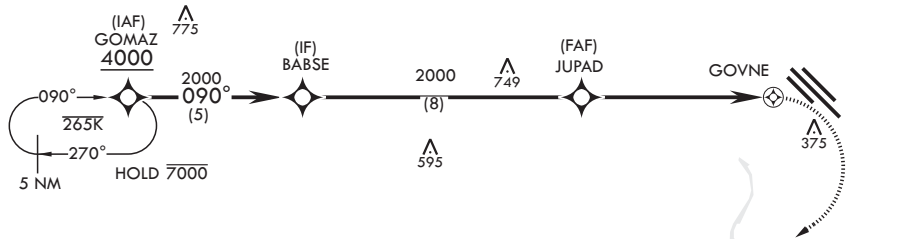
ATIS* <b>115.2 273.5</b>	APP CON* <b>126.075 239.25 N</b> <b>134.55 350.3 SE</b> <b>135.6 323.275 SW</b>	TOWER* <b>126.65 379.925</b>	GND CON* <b>121.9 275.8</b>	CLNC DEL* <b>269.55</b>
-----------------------------	--	---------------------------------	--------------------------------	----------------------------

522  
Circling visibility reduction by helicopters NA.

When circling to Rwy 31R at night, operational VGSI required, remain on or above VGSI glidepath until threshold.

DME/DME RNP-0.3 NA

775

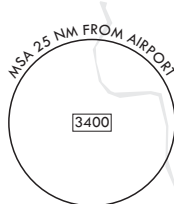
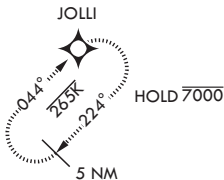


SC-4, 26 DEC 2024 to 23 JAN 2025

SC-4, 26 DEC 2024 to 23 JAN 2025

## FOR USE BY 14 FTW ACFT ONLY

EMERG SAFE ALT 100 NM 3700



BABSE		JUPAD		GOVNE		JOLLI		ELEV 218	
2000		2000		5.5 NM		3000		352	
090°		090°		090°		090°		090°	
A		B		C		D		A1	
760-1		542 (600-1)		760-1½ 542 (600-1½)		NA		BCN 399	
CIRCLING								HIRL Rwy 13C-31C, 13L-31R MIRL Rwy 13R-31L	

COLUMBUS, MISSISSIPPI

33°39'N - 88°27'W

COLUMBUS AFB (KCBM)

Amdt 4 21APR22

# RNAV (GPS) E