

CLPRR THREE ARRIVAL (RNAV)  
(CLPRR, CLPRR3) 26DEC24

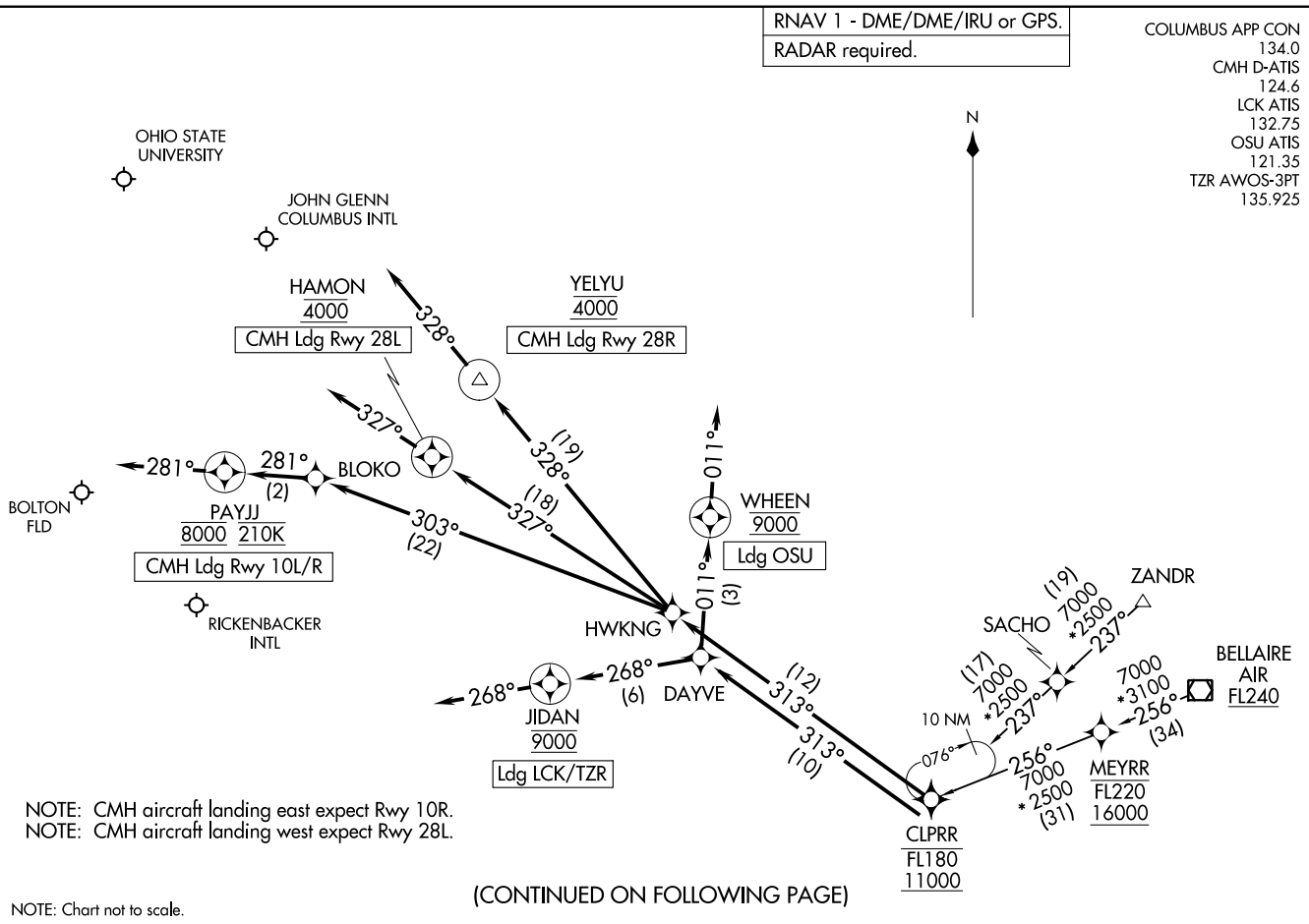
RNAV 1 - DME/DME/IRU or GPS.  
RADAR required.

COLUMBUS APP CON  
134.0  
CMH D-ATIS  
124.6  
LCK ATIS  
132.75  
OSU ATIS  
121.35  
TZR AWOS-3PT  
135.925

(CLPRR, CLPRR3) 24361  
CLPRR THREE ARRIVAL (RNAV)

AL-94 (FAA)

COLUMBUS, OHIO



NOTE: CMH aircraft landing east expect Rwy 10R.  
NOTE: CMH aircraft landing west expect Rwy 28L.

NOTE: Chart not to scale.

(CONTINUED ON FOLLOWING PAGE)

COLUMBUS, OHIO

ARRIVAL ROUTE DESCRIPTION

BELLAIRE TRANSITION (AIR.CLPRR3)

ZANDR TRANSITION (ZANDR.CLPRR3)

CMH: From CLPRR on track 313° to HWKNG.

LANDING CMH RUNWAY 10L/R: From HWKNG on track 303° to BLOKO, then on track 281° to cross PAYJJ at 8000 and at 210K, then on track 281°. Expect RADAR vectors to final approach course.

LANDING CMH RUNWAY 28L: From HWKNG on track 327° to cross HAMON at 4000, then on track 327°. Expect RADAR vectors for ILS Rwy 28L approach.

LANDING CMH RUNWAY 28R: From HWKNG on track 328° to cross YELYU at 4000, then on track 328°. Expect RADAR vectors for ILS Rwy 28R approach.

LANDING TZR/LCK: From CLPRR on track 313° to DAYVE, then on track 268° to cross JIDAN at 9000, then on track 268°. Expect RADAR vectors to final approach course.

LANDING OSU: From CLPRR on track 313° to DAYVE, then on track 011° to cross WHEEN at 9000, then on track 011°. Expect RADAR vectors to final approach course.

EC-2, 26 DEC 2024 to 23 JAN 2025

EC-2, 26 DEC 2024 to 23 JAN 2025