

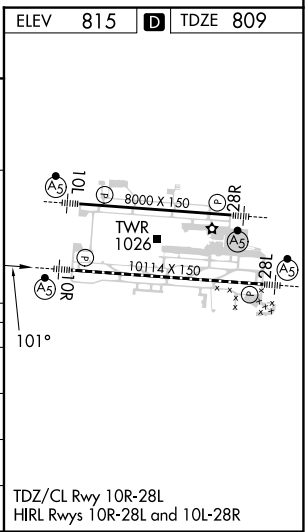
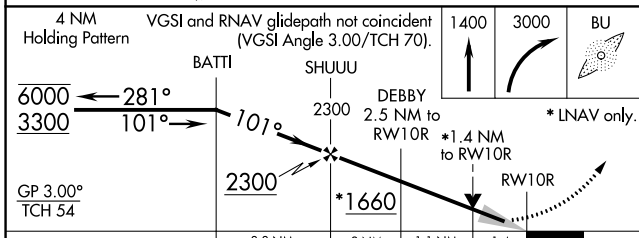
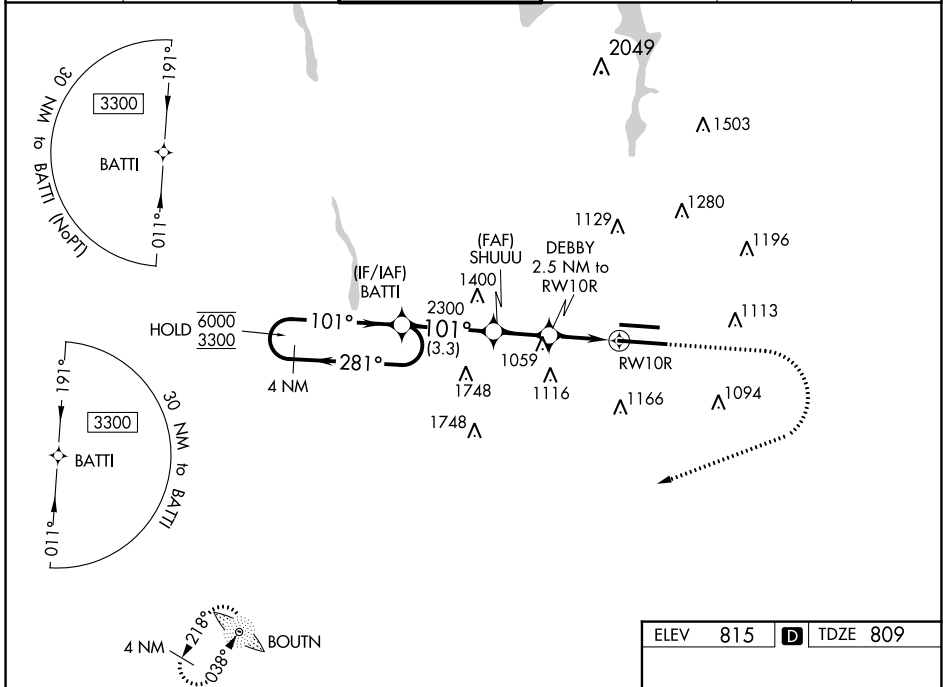
WAAS CH 99603 W10A	APP CRS 101°	Rwy Idg TDZE 809 Apt Elev 815
--	------------------------	---

RNAV (GPS) Y RWY 10R

JOHN GLENN COLUMBUS INTL (CMH)

RNP APCH.	MALSR 	MISSED APPROACH: Climb to 1400 then climbing right turn to 3000 direct BU LOM and hold.
<p>⚠ For uncompensated Baro-VNAV systems, LNAV/VNAV NA below -19°C or above 54°C. LNAV procedure NA during simultaneous operations. Use of FD or AP providing RNAV track guidance required during simultaneous operations. For inop ALS, increase LNAV Cat C/D visibility to 1$\frac{1}{2}$ SM. Simultaneous approach authorized.</p>		

D-ATIS 124.6	COLUMBUS APP CON 125.95 371.975	COLUMBUS TOWER 132.7 257.8	GND CON 121.9 348.6	CLNC DEL 126.3	CPDLC
------------------------	---	--------------------------------------	-------------------------------	--------------------------	-------



CATEGORY	A	B	C	D
LPV DA	1009/18 200 (200- $\frac{1}{2}$)			
LNAV/VNAV DA	1194/35 385 (400- $\frac{5}{8}$)			
LNAV MDA	1320/24	511 (600- $\frac{1}{2}$)	1320/55	511 (600-1)
C CIRCLING	1340-1	525 (600-1)	1520-2 705 (800-2)	1520-2 $\frac{1}{4}$ 705 (800-2 $\frac{1}{4}$)

TDZ/CL Rwy 10R-28L
HIRL Rwy 10R-28L and 10L-28R

EC-2, 26 DEC 2024 to 23 JAN 2025

EC-2, 26 DEC 2024 to 23 JAN 2025