

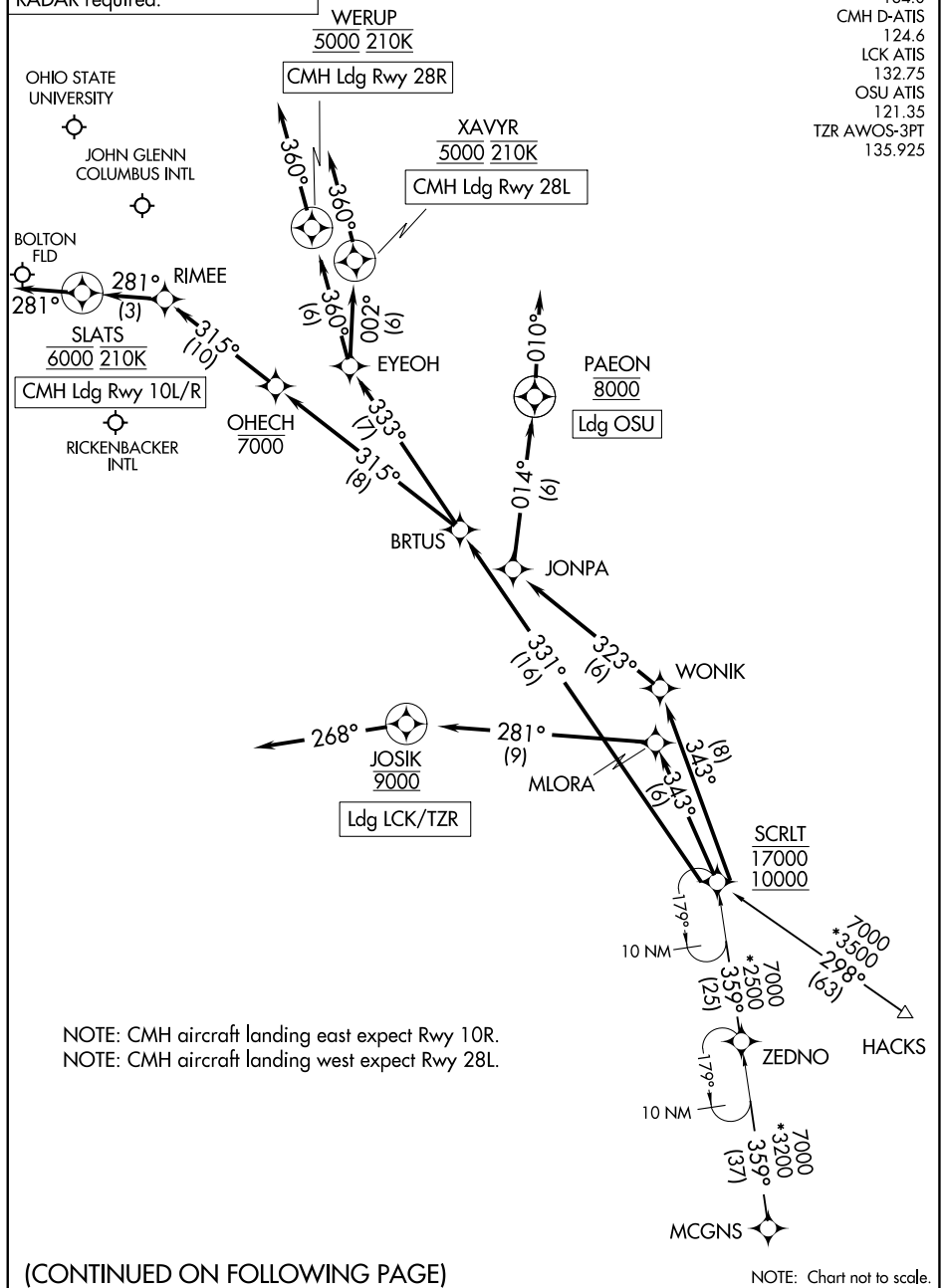
SCRLT TWO ARRIVAL (RNAV)

COLUMBUS, OHIO

RNAV 1 - DME/DME/IRU or GPS.

RADAR required.

COLUMBUS APP CON 134.0
 CMH D-ATIS 124.6
 LCK ATIS 132.75
 OSU ATIS 121.35
 TZR AWOS-3PT 135.925



EC-2, 26 DEC 2024 to 23 JAN 2025

EC-2, 26 DEC 2024 to 23 JAN 2025

(CONTINUED ON FOLLOWING PAGE)

SCRLT TWO ARRIVAL (RNAV)

COLUMBUS, OHIO

SCRLT TWO ARRIVAL (RNAV)

COLUMBUS, OHIO

ARRIVAL ROUTE DESCRIPTION

HACKS TRANSITION (HACKS.SCRLT2)
MCGNS TRANSITION (MCGNS.SCRLT2)

CMH: from SCRLT on track 331° to BRTUS.

LANDING CMH RUNWAY 10L/R: From BRTUS on track 315° to cross OHECH at or below 7000, then on track 315° to RIMEE, then on track 281° to cross SLATS at 6000 and at 210K, then on track 281°. Expect RADAR vectors to final approach course.

LANDING CMH RUNWAY 28L: From BRTUS on track 333° to EYEOH, then on track 002° to cross XAVYR at 5000 and at 210K, then on track 360°. Expect RADAR vectors for ILS Rwy 28L approach.

LANDING CMH RUNWAY 28R: From BRTUS on track 333° to EYEOH, then on track 360° to cross WERUP at 5000 and at 210K, then on track 360°. Expect RADAR vectors for ILS Rwy 28R approach.

LANDING TZR/LCK: From SCRLT on track 343° to MLORA, then on track 281° to cross JOSIK at 9000, then on track 268°. Expect RADAR vectors to final approach course.

LANDING OSU: From SCRLT on track 343° to WONIK, then on track 323° to JONPA, then on track 014° to cross PAEON at 8000, then on track 010°. Expect RADAR vectors to final approach course.

EC-2, 26 DEC 2024 to 23 JAN 2025

EC-2, 26 DEC 2024 to 23 JAN 2025