

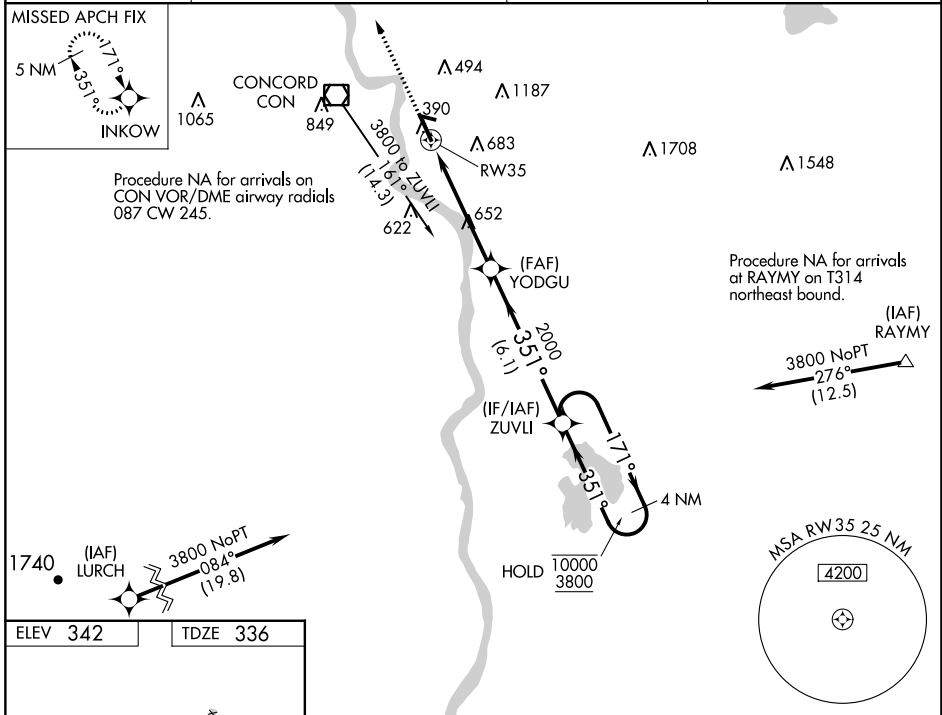
WAAS CH 90112 W35A	APP CRS 351°	Rwy Idg 6005
		TDZE 336
		Apt Elev 342

RNAV (GPS) RWY 35

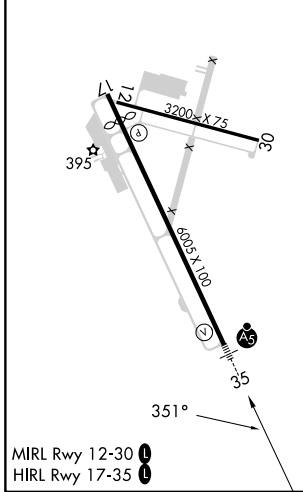
CONCORD MUNI (CON)

RNP APCH - GPS.	MALSR	MISSED APPROACH: Climb to 4500 direct INKOW and hold, continue climb-in-hold to 4500.
<p> Circling Rwy 12, 17, 30 NA at night. For uncompensated Baro-VNAV systems,</p> <p> LNAV/VNAV NA below -20°C or above 54°C. For inop ALS, increase LNAV/VNAV visibility to 1½ SM, LNAV Cats C and D visibility to 1½ SM.</p>		

ASOS 132.325	BOSTON APP CON 127.35 269.075	CLNC DEL 133.65	UNICOM 122.7 (CTAF) 0
------------------------	---	---------------------------	---------------------------------

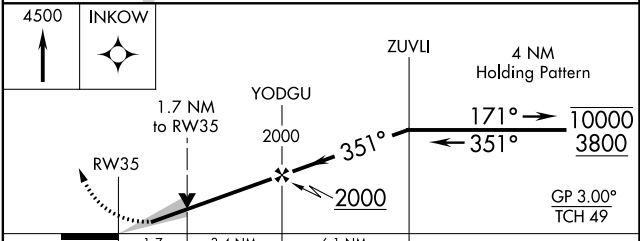


ELEV 342	TDZE 336
----------	----------



MIRL Rwy 12-30

HIRL Rwy 17-35



CATEGORY	A	B	C	D
LPV DA	586-½ 250 (300-½)			
LNAV/VNAV DA	967-1⅓ 631 (700-1⅓)			
LNAV MDA	940-½ 604 (600-½)	940-1⅓ 604 (600-1⅓)		
CIRCLING	940-1 598 (600-1)	1080-1 738 (800-1)	1500-3 1158 (1200-3)	

NE-1, 26 DEC 2024 to 23 JAN 2025

NE-1, 26 DEC 2024 to 23 JAN 2025