

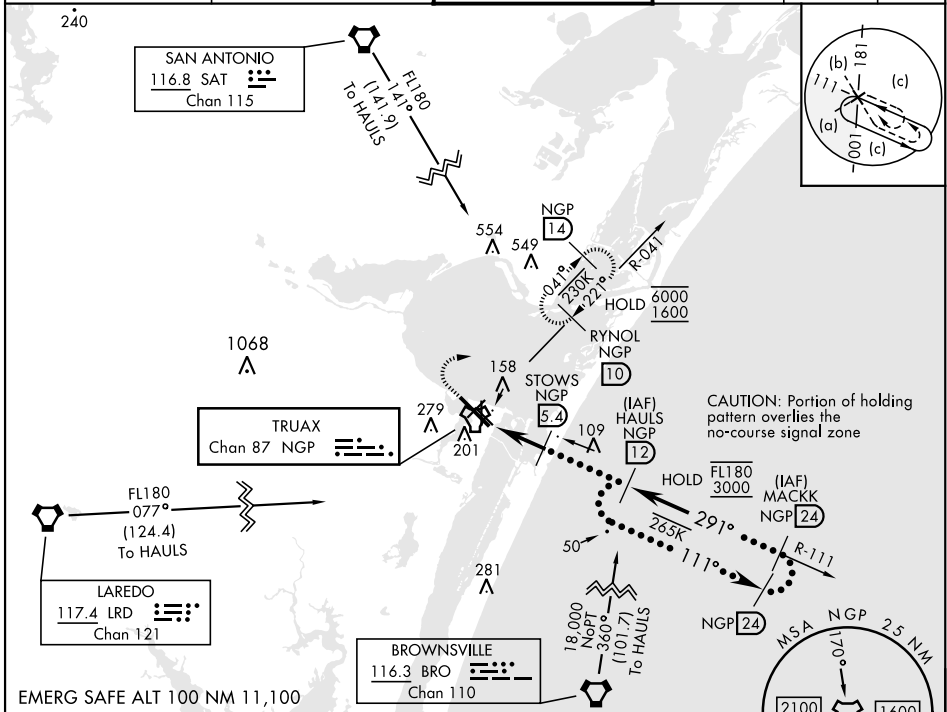
TACAN NGP Chan <b>87</b>	APCH CRS <b>291°</b>	Rwy Idg TDZE Arpt Elev <b>8001</b> <b>17</b> <b>18</b>
-----------------------------	-------------------------	---

[USN]

CORPUS CHRISTI NAS (TRUAX FLD) (KNGP)

When local altimeter setting not received, use Corpus Christi (CRP) Intl altimeter setting. MISSED APPROACH: Climb to 1600 direct NGP TACAN and turn right to intercept R-041 to RYNOL and hold.

ATIS ★ <b>127.9 290.9</b>	APP CON <b>127.5 259.3</b>	NAVY CORPUS TOWER ★ <b>134.85 0 340.2</b>	GND CON <b>118.7 257.85</b>	CLNC DEL <b>314.3</b>	ASR/ PAR
------------------------------	-------------------------------	--	--------------------------------	--------------------------	-------------



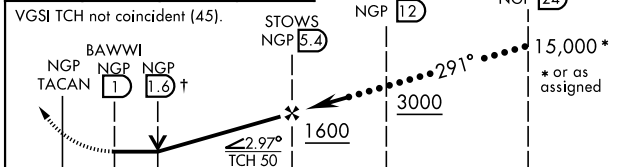
SC-3, 26 DEC 2024 to 23 JAN 2025

SC-3, 26 DEC 2024 to 23 JAN 2025

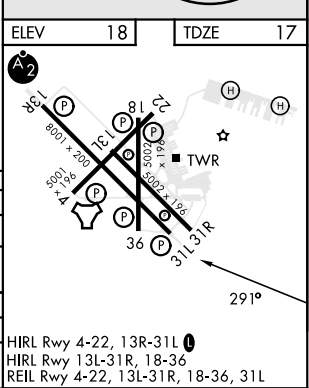
EMERG SAFE ALT 100 NM 11,100

1600 NGP RYNOL R-041

↑ VDP NA when using Corpus Christi (CRP) Intl altimeter setting.



CATEGORY	C	D	E
S-31L	420-1 1/8	403 (500-1 1/8)	
CIRCLING	520-1 1/2 502 (600-1 1/2)	580-2	562 (600-2)
CORPUS CHRISTI (CRP) INTL ALTIMETER SETTING			
S-31L	460-1 3/8	443 (500-1 3/8)	
CIRCLING	540-1 1/2 522 (600-1 1/2)	620-2 602 (700-2)	620-2 1/4 602 (700-2 1/4)



CORPUS CHRISTI, TEXAS 27°42'N-97°17'W CORPUS CHRISTI NAS (TRUAX FLD) (KNGP)

Orig 30NOV23

HIRL Rwy 4-22, 13R-31L  
HIRL Rwy 13L-31R, 18-36  
REIL Rwy 4-22, 13L-31R, 18-36, 31L