

RNAV (GPS) RWY 13L

CORPUS CHRISTI NAS (TRUAX FLD) (KNGP)

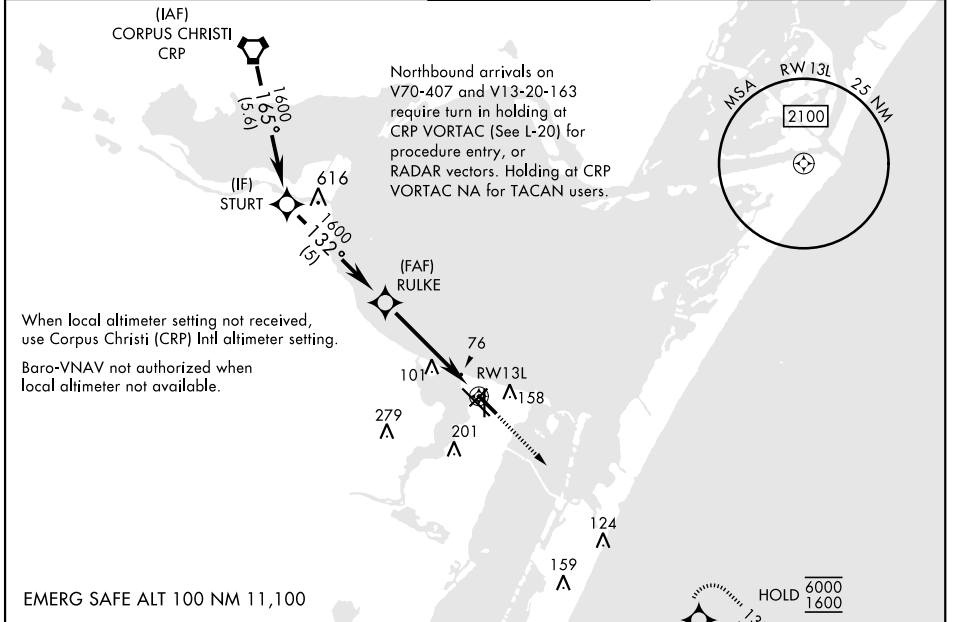
[USN]

| | | |
|----------|------------|------|
| APCH CRS | Rwy Idg | 5002 |
| 132° | TDZE | 18 |
| | Arprt Elev | 18 |

RNP APCH
 ▼ For uncompensated Baro-VNAV systems, LNAV/VNAV NA below -15° C (5° F) or above 54° C (129° F).

MISSED APPROACH: Climb to 600, then climbing right turn to 1600 direct POLCK and hold.

| | | | | | |
|-----------------------|---------------------------|-------------------------------------|-------------------------|-------------------|---------|
| ATIS ★ 127.9 290.9 | APP CON 128.675 343.75 | NAVY CORPUS TOWER ★ 134.85 340.2 | GND CON 118.7 257.85 | CLNC DEL 314.3 | ASR/PAR |
|-----------------------|---------------------------|-------------------------------------|-------------------------|-------------------|---------|

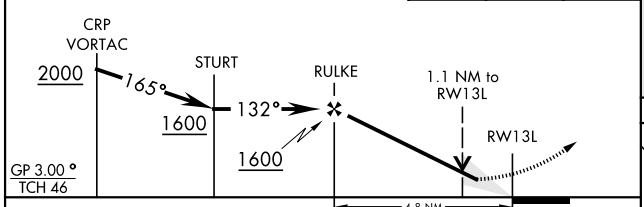
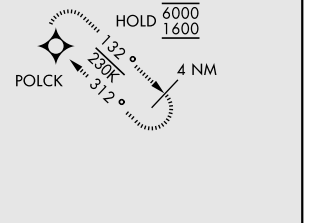


When local altimeter setting not received, use Corpus Christi (CRP) Intl altimeter setting.
 Baro-VNAV not authorized when local altimeter not available.

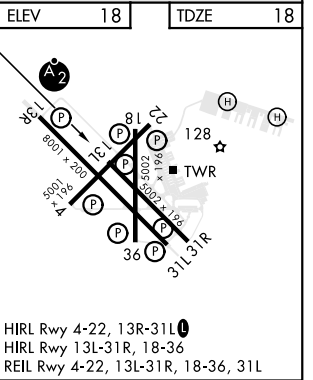
EMERG SAFE ALT 100 NM 11,100

VDP not authorized when using Corpus Christi (CRP) Intl altimeter setting.

| | | |
|-----|------|-------|
| 600 | 1600 | POLCK |
| | | |



| CATEGORY | A | B | C | D |
|---|----------------------|----------------------|------------------------|----------------------|
| LNAV/VNAV DA | 268-1 | | 250 (300-1) | |
| LNAV MDA | 400-1 | 382 (400-1) | 400-1½ | 382 (400-1½) |
| CIRCLING | 460-1 442 (500-1) | 480-1 462 (500-1) | 520-1½ 502 (600-1½) | 580-2 562 (600-2) |
| CORPUS CHRISTI (CRP) INTL ALTIMETER SETTING | | | | |
| LNAV MDA | 420-1 | 402 (500-1) | 420-1½ | 402 (500-1½) |
| CIRCLING | 500-1 | 482 (500-1) | 540-1½ 522 (600-1½) | 620-2 602 (700-2) |



CORPUS CHRISTI, TEXAS 27°42'N-97°17'W CORPUS CHRISTI NAS (TRUAX FLD) (KNGP)

Amdt 2 30NOV23

RNAV (GPS) RWY 13L

SC-3, 26 DEC 2024 to 23 JAN 2025

SC-3, 26 DEC 2024 to 23 JAN 2025