

RNAV (GPS) RWY 18

| | | |
|----------|-----------|------|
| APCH CRS | Rwy ldg | 5002 |
| 177° | TDZE | 18 |
| | Arpt Elev | 18 |

[USN]

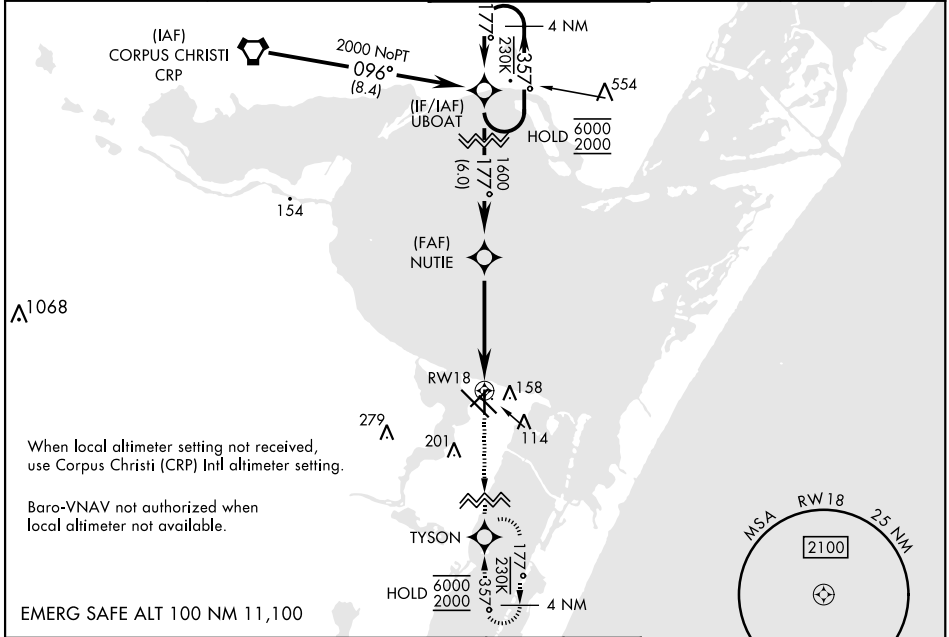
CORPUS CHRISTI NAS (TRUAX FLD) (KNGP)

RNP APCH

For uncompensated Baro-VNAV systems, LNAV/VNAV NA below -15°C C (5°F) or above 54°C C (129°F).

MISSED APPROACH: Climb to 2000 direct TYSON and hold.

| | | | | | |
|-----------------------|---------------------------|-------------------------------------|-------------------------|-------------------|-------------|
| ATIS ★ 127.9 290.9 | APP CON 128.675 343.75 | NAVY CORPUS TOWER ★ 134.85 340.2 | GND CON 118.7 257.85 | CLNC DEL 314.3 | ASR/ PAR |
|-----------------------|---------------------------|-------------------------------------|-------------------------|-------------------|-------------|

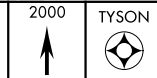


When local altimeter setting not received, use Corpus Christi (CRP) Intl altimeter setting.

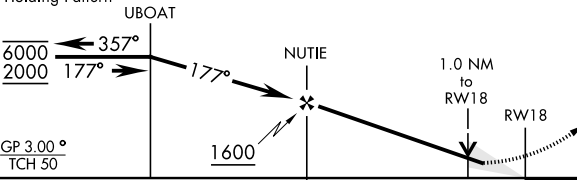
Baro-VNAV not authorized when local altimeter not available.

EMERG SAFE ALT 100 NM 11,100

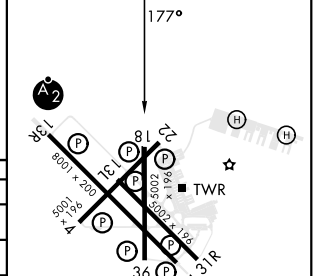
VDP not authorized when using Corpus Christi (CRP) Intl altimeter setting.



4 NM Holding Pattern



| | | | |
|------|----|------|----|
| ELEV | 18 | TDZE | 18 |
|------|----|------|----|



| CATEGORY | A | B | C | D |
|---|----------------------------------|-------------|-------------------------------------|---|
| LNAV/VNAV DA | 268- ³ / ₄ | 250 | (300- ³ / ₄) | 275- ³ / ₄ (300- ³ / ₄) |
| LNAV MDA | 380-1 | | 362 | (400-1) |
| CIRCLING | 460-1 | 480-1 | 520-1½ | 580-2 |
| | 442 (500-1) | 462 (500-1) | 502 (600-1½) | 562 (600-2) |
| CORPUS CHRISTI (CRP) INTL ALTIMETER SETTING | | | | |
| LNAV MDA | 400-1 | 382 (400-1) | 400-1½ | 382 (400-1½) |
| CIRCLING | 500-1 | 482 (500-1) | 540-1½ | 620-2 |
| | | | 522 (600-1½) | 602 (700-2) |

HIRL Rwy 4-22, 13R-31L
HIRL Rwy 13L-31R, 18-36
REIL Rwy 4-22, 13L-31R, 18-36, 31L

RNAV (GPS) RWY 18

SC-3, 26 DEC 2024 to 23 JAN 2025

SC-3, 26 DEC 2024 to 23 JAN 2025