

RNAV (GPS) RWY 22

APCH CRS	Rwy Idg	5001
222°	TDZE	15
	Arprt Elev	18

[USN]

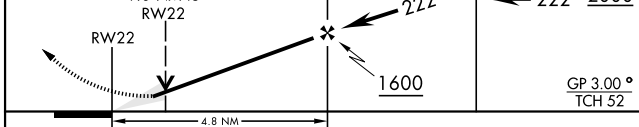
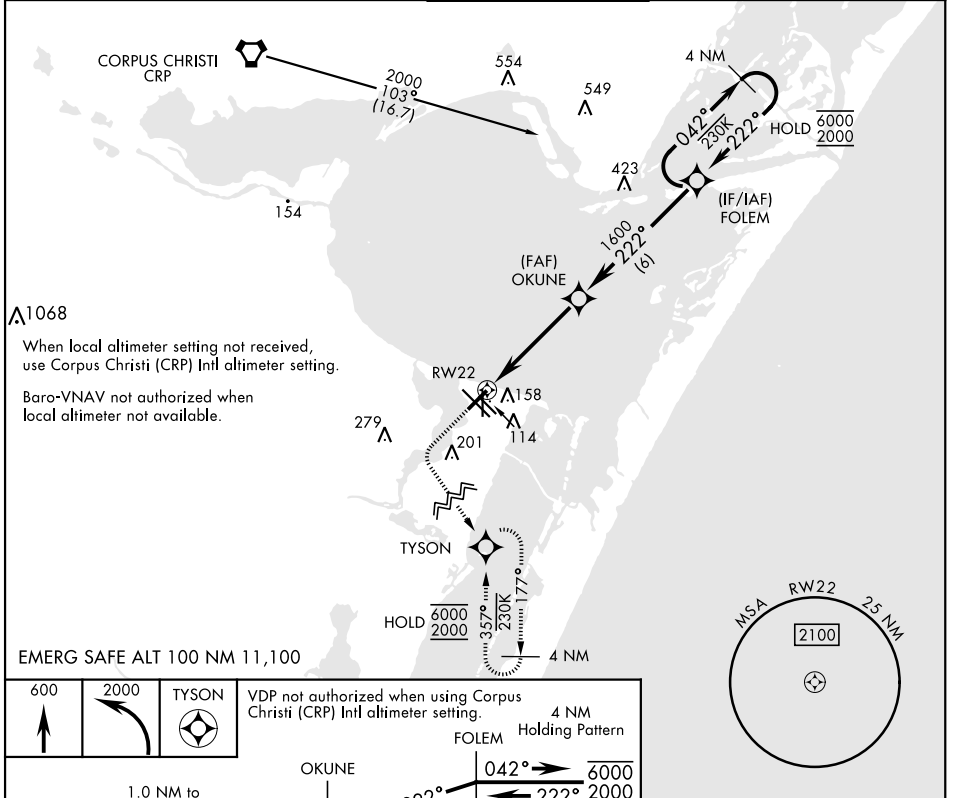
CORPUS CHRISTI NAS (TRUAX FLD) (KNGP)

RNP APCH

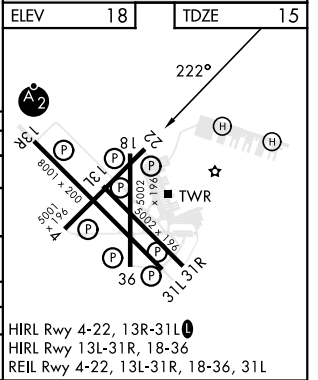
▼ For uncompensated Baro-VNAV systems, LNAV/VNAV NA below -15°C (5°F) or above 54°C (129°F).

MISSED APPROACH: Climb to 600, then climbing left turn to 2000 direct TYSON and hold.

ATIS ★ 127.9 290.9	APP CON 128.675 343.75	NAVY CORPUS TOWER ★ 134.85 340.2	GND CON 118.7 257.85	CLNC DEL 314.3	ASR/ PAR
------------------------------	----------------------------------	--	--------------------------------	--------------------------	-------------



CATEGORY	A	B	C	D
LNAV MDA	380-1		365	(400-1)
LNAV/VNAV DA	320-7/8		305	(400-7/8)
CIRCLING	460-1	480-1	520-1 1/2	580-2
	422 (500-1)	462 (500-1)	502 (600-1 1/2)	562 (600-2)
CORPUS CHRISTI (CRP) INTL ALTIMETER SETTING				
LNAV MDA	400-1	385 (400-1)	400-1 1/8	385 (400-1 1/8)
CIRCLING	500-1	482 (500-1)	540-1 1/2	620-2
			522 (600-1 1/2)	602 (700-2)



RNAV (GPS) RWY 22

SC-3, 26 DEC 2024 to 23 JAN 2025

SC-3, 26 DEC 2024 to 23 JAN 2025