

# RNAV (GPS) RWY 36

APCH CRS	Rwy Idg	5002
357°	TDZE	18
	Arpt Elev	18

[USN]

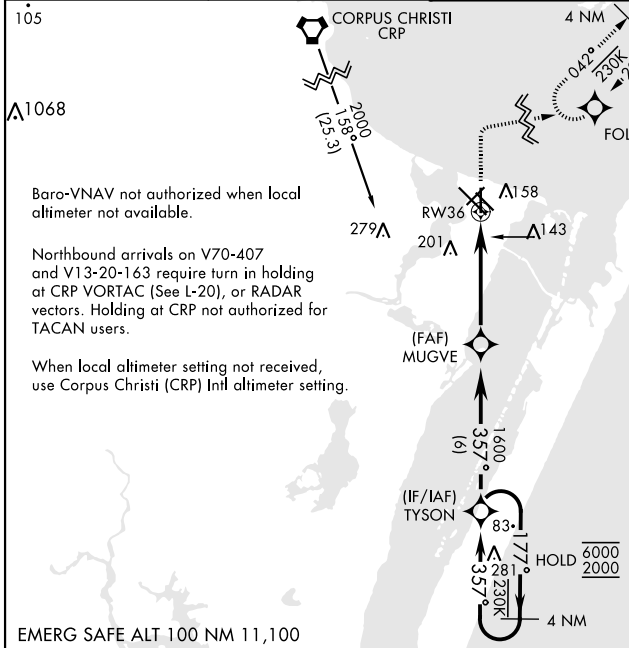
CORPUS CHRISTI NAS (TRUAX FLD) (KNGP)

RNP APCH

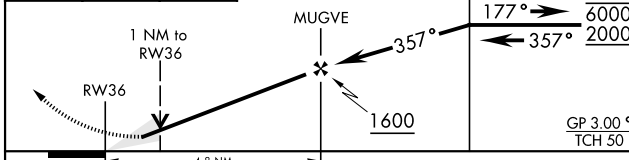
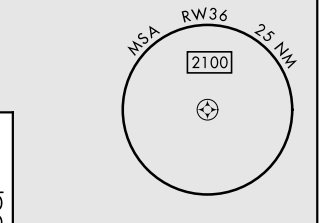
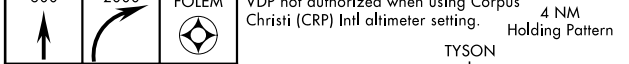
MISSED APPROACH: Climb to 600, then climbing right turn to 2000 direct FOLEM and hold.

For uncompensated Baro-VNAV systems, LNAV/VNAV NA below -15°C (5°F) or above 54°C (129°F).

ATIS ★ <b>127.9 290.9</b>	APP CON <b>128.675 343.75</b>	NAVY CORPUS TOWER ★ <b>134.85 0 340.2</b>	GND CON <b>118.7 257.85</b>	CLNC DEL <b>314.3</b>	ASR/ PAR
------------------------------	----------------------------------	----------------------------------------------	--------------------------------	--------------------------	-------------

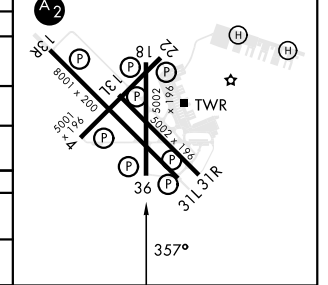


EMERG SAFE ALT 100 NM 11,100



ELEV	18	TDZE	18
HIRL Rwy 4-22, 13R-31L			
HIRL Rwy 13L-31R, 18-36			
REL Rwy 4-22, 13L-31R, 18-36, 31L			

CATEGORY	A	B	C	D
LNAV MDA	400-1	382 (400-1)	400-1½	382 (400-1½)
LNAV/VNAV DA	400-1½		382 (400-1½)	
<b>C</b> CIRCLING	460-1 442 (500-1)	480-1 462 (500-1)	520-1½ 502 (600-1½)	580-2 562 (600-2)
CORPUS CHRISTI (CRP) INTL ALTIMETER SETTING				
LNAV MDA	440-1	422 (500-1)	440-1¼	422 (500-1¼)
<b>C</b> CIRCLING	500-1	482 (500-1)	540-1½ 522 (600-1½)	620-2 602 (700-2)



# RNAV (GPS) RWY 36

SC-3, 26 DEC 2024 to 23 JAN 2025

SC-3, 26 DEC 2024 to 23 JAN 2025