

CORPUS CHRISTI, TEXAS

# RNAV (GPS) RWY 4

APCH CRS 042°	Rwy ldg TDZE Arprt Elev 17 18	5001
------------------	---	------

[USN]

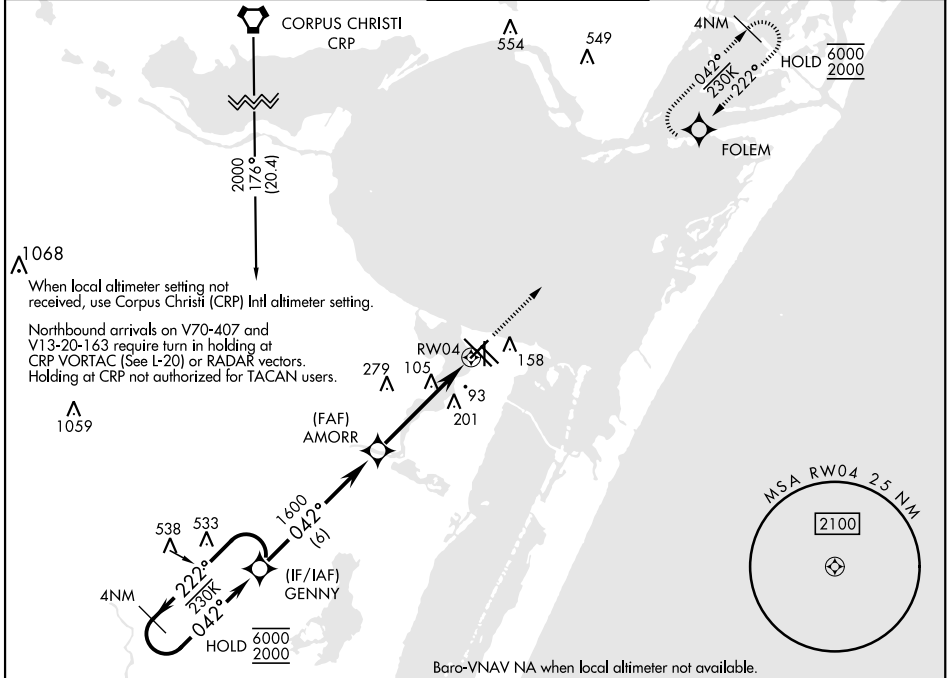
CORPUS CHRISTI NAS (TRUAX FLD) (KNGP)

RNP APCH

▼ For uncompensated Baro-VNAV systems, LNAV/VNAV NA below -15°C (5°F) or above 54°C (129°F)

MISSED APPROACH: Climb to 2000 direct FOLEM and hold.

ATIS ★ 127.9 290.9	APP CON 128.675 343.75	NAVY CORPUS TOWER ★ 134.85 340.2	GND CON 118.7 257.85	CLNC DEL 314.3	ASR/ PAR
-----------------------	---------------------------	-------------------------------------	-------------------------	-------------------	-------------

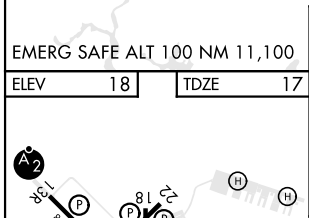


SC-3, 26 DEC 2024 to 23 JAN 2025

SC-3, 26 DEC 2024 to 23 JAN 2025

EMERG SAFE ALT 100 NM 11,100

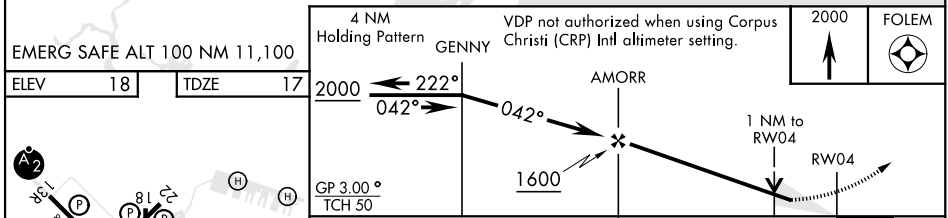
ELEV 18	TDZE 17
---------	---------



4 NM Holding Pattern Genny

VDP not authorized when using Corpus Christi (CRP) Intl altimeter setting.

2000 FOLEM



CATEGORY	A	B	C	D
LNNAV/VNAV DA	267- <sup>3</sup> / <sub>4</sub>		250 (300- <sup>3</sup> / <sub>4</sub> )	
LNNAV MDA	400-1	383 (400-1)	400-1 <sup>1</sup> / <sub>8</sub> 383 (400-1 <sup>1</sup> / <sub>8</sub> )	580-2
CIRCLING	442 (500-1)	480-1 462 (500-1)	520-1 <sup>1</sup> / <sub>2</sub> 502 (600-1 <sup>1</sup> / <sub>2</sub> )	580-2 562 (600-2)
<b>CORPUS CHRISTI (CRP) Intl ALTIMETER SETTING</b>				
LNNAV MDA	420-1	403 (500-1)	420-1 <sup>1</sup> / <sub>8</sub> 403 (500-1 <sup>1</sup> / <sub>8</sub> )	620-2
CIRCLING	500-1	482 (500-1)	540-1 <sup>1</sup> / <sub>2</sub> 522 (600-1 <sup>1</sup> / <sub>2</sub> )	620-2 602 (700-2)

HIRL Rwy 4-22, 13R-31L  
HIRL Rwy 13L-31R, 18-36  
REIL Rwy 4-22, 13L-31R, 18-36, 31L

27°42'N-97°17'W

CORPUS CHRISTI NAS (TRUAX FLD) (KNGP)

# RNAV (GPS) RWY 4

CORPUS CHRISTI, TEXAS  
Amdt 2 30NOV23