

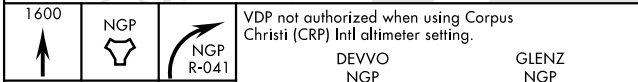
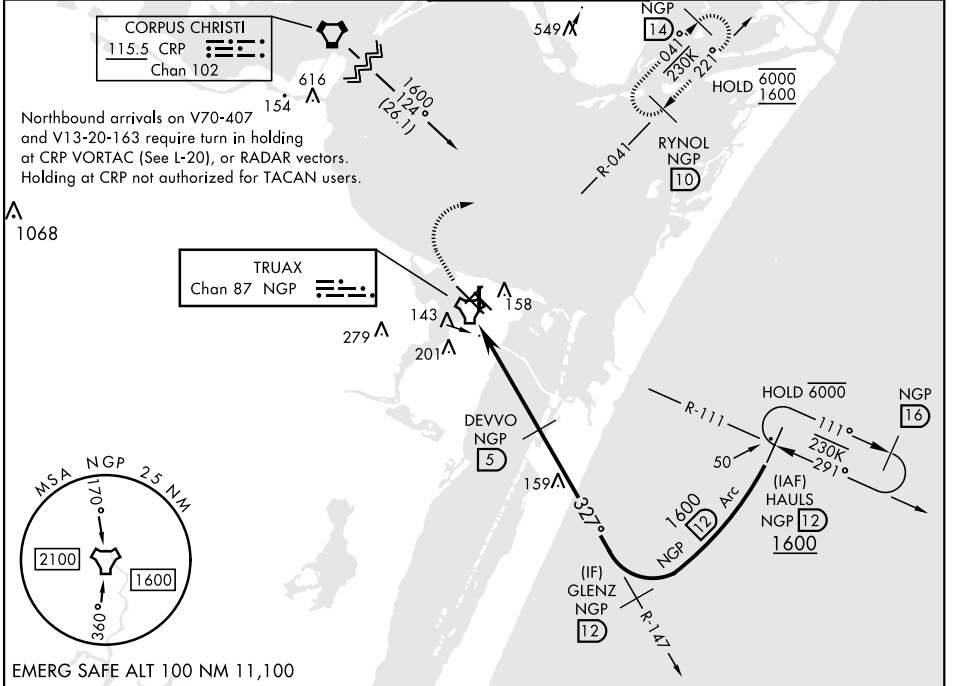
TACAN RWY 36

TACAN NGP Chan 87	APCH CRS 327°	Rwy ldg TDZE Arprt Elev	5002 18 18
-----------------------------	-------------------------	-------------------------------	---------------------------------------

[USN]

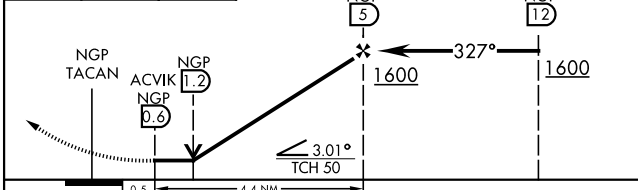
CORPUS CHRISTI NAS (TRUAX FLD) (KNGP)

▼ When local altimeter setting not received, use Corpus Christi (CRP) Intl altimeter setting.	MISSED APPROACH: Climb to 1600 direct NGP TACAN and turn right to intercept R-041 to RYNOL and hold.				
ATIS ★ 127.9 290.9	APP CON 128.675 343.75	NAVY CORPUS TOWER ★ 134.85 340.2	GND CON 118.7 257.85	CLNC DEL 314.3	ASR/ PAR

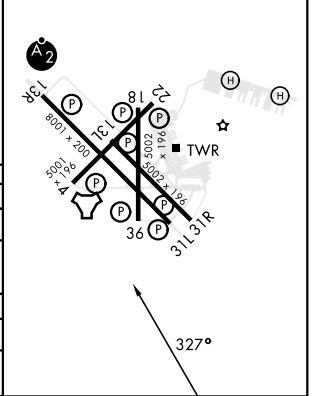


ELEV	18	TDZE	18
------	----	------	----

HIRL Rwy 4-22, 13R-31L
HIRL Rwy 13L-31R, 18-36
REIL Rwy 4-22, 13L-31R, 18-36, 31L



CATEGORY	A	B	C	D
S-36	400-1 382 (400-1)		400-1 382 (400-1)	
C CIRCLING	460-1 442 (500-1)	480-1 462 (500-1)	520-1 1/2 502 (600-1 1/2)	580-2 562 (600-2)
CORPUS CHRISTI (CRP) INTL ALTIMETER SETTING				
S-36	440-1 422 (500-1)		440-1 1/4 422 (500-1 1/4)	
C CIRCLING	500-1 482 (500-1)		540-1 1/2 522 (600-1 1/2)	620-2 602 (700-2)



TACAN RWY 36

SC-3, 26 DEC 2024 to 23 JAN 2025

SC-3, 26 DEC 2024 to 23 JAN 2025