

# TACAN X RWY 31L

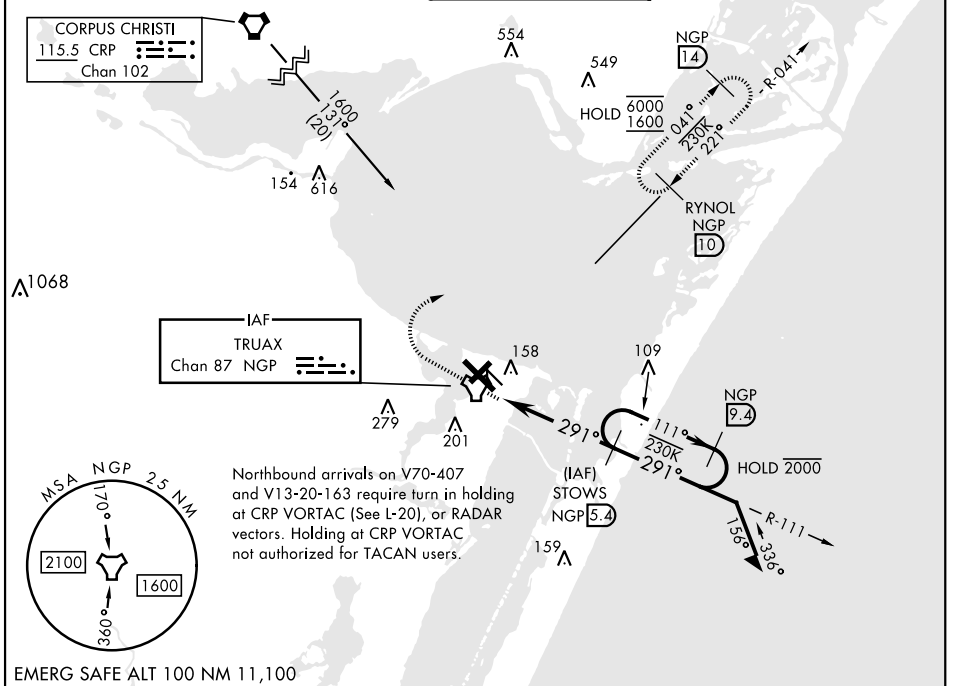
TACAN NGP Chan <b>87</b>	APCH CRS <b>291°</b>	Rwy Idg <b>8001</b> TDZE <b>17</b> Arpt Elev <b>18</b>
--------------------------	----------------------	--

[USN]

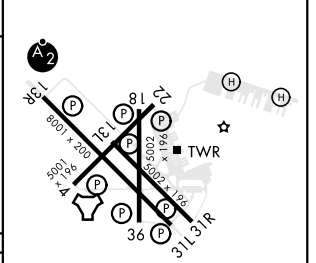
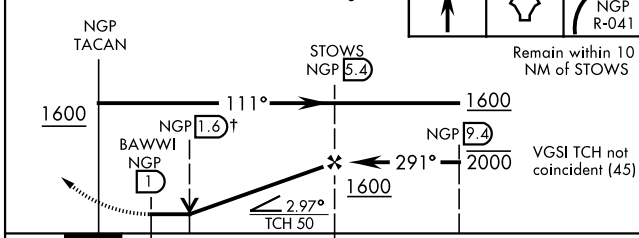
CORPUS CHRISTI NAS (TRUAX FLD) (KNGP)

**▼** When local altimeter setting not received, use Corpus Christi (CRP) Intl altimeter setting. **MISSED APPROACH:** Climb to 1600 direct NGP TACAN and turn right to intercept R-041 to RYNOL and hold.

ATIS ★ <b>127.9 290.9</b>	APP CON <b>128.675 343.75</b>	NAVY CORPUS TOWER ★ <b>134.85 340.2</b>	GND CON <b>118.7 257.85</b>	CLNC DEL <b>314.3</b>	ASR/PAR
------------------------------	----------------------------------	--	--------------------------------	--------------------------	---------



↑ VDP not authorized when using Corpus Christi (CRP) Intl altimeter setting.	1600	NGP	NGP R-041	ELEV 18	TDZE 17
--	------	-----	-----------	---------	---------



CATEGORY	A	B	C	D
S-31L	420-1 403 (500-1)	420-1½ 403 (500-1½)	420-1½ 403 (500-1½)	580-2
CIRCLING	460-1	480-1	520-1½	580-2
	442 (500-1)	462 (500-1)	502 (600-1½)	562 (600-2)
CORPUS CHRISTI (CRP) INTL ALTIMETER SETTING				
S-31L	460-1 443 (500-1)	460-1¾ 443 (500-1¾)	540-1½	620-2
CIRCLING	500-1	482 (500-1)	522 (600-1½)	602 (700-2)

FAF to MAP 4.4 NM				
Knots	60	90	120	150 180
Min:Sec	4:24	2:56	2:12	1:46 1:28

CORPUS CHRISTI, TEXAS 27° 42' N-97° 17' W CORPUS CHRISTI NAS (TRUAX FLD) (KNGP)

Amdt 2 30NOV23

# TACAN X RWY 31L

SC-3, 26 DEC 2024 to 23 JAN 2025

SC-3, 26 DEC 2024 to 23 JAN 2025