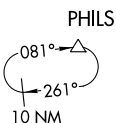


BACHR FOUR ARRIVAL (RNAV) Transition Routes
(KNEAD.BACHR4) 26MAY16

(KNEAD.BACHR4) 24305
BACHR FOUR ARRIVAL (RNAV) Transition Routes

LONE STAR APP CON
135.975 379.9
D-ATIS
120.15



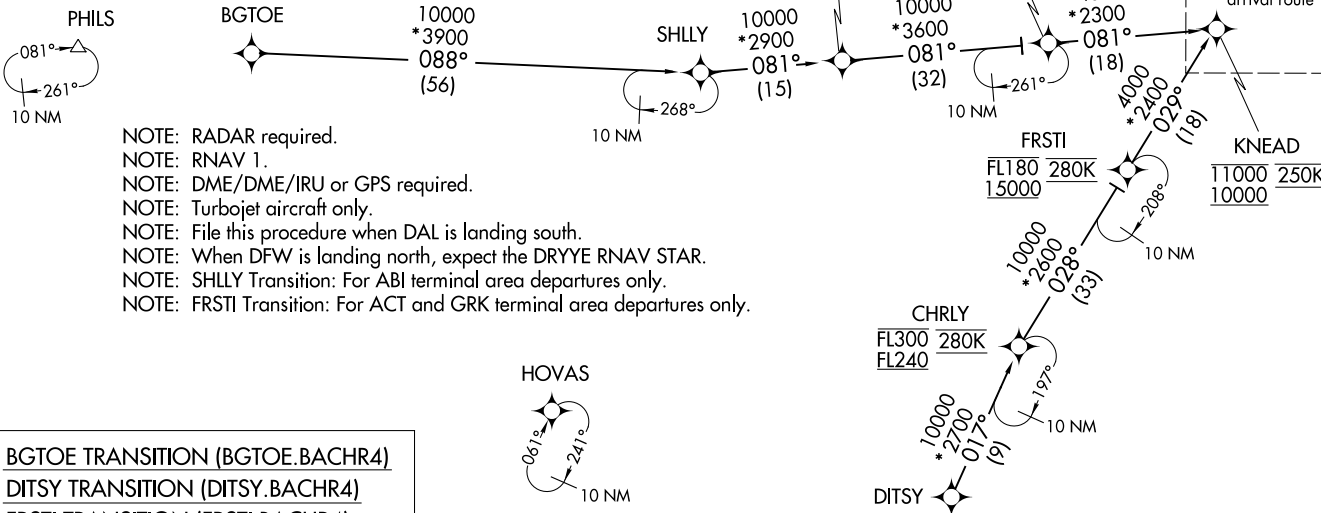
- NOTE: RADAR required.
- NOTE: RNAV 1.
- NOTE: DME/DME/IRU or GPS required.
- NOTE: Turbojet aircraft only.
- NOTE: File this procedure when DAL is landing south.
- NOTE: When DFW is landing north, expect the DRYYE RNAV STAR.
- NOTE: SHLLY Transition: For ABI terminal area departures only.
- NOTE: FRSTI Transition: For ACT and GRK terminal area departures only.

- BGTOE TRANSITION (BGTOE.BACHR4)
- DITSY TRANSITION (DITSY.BACHR4)
- FRSTI TRANSITION (FRSTI.BACHR4)
- SHLLY TRANSITION (SHLLY.BACHR4)



(CONTINUED ON FOLLOWING PAGE)

NOTE: Chart not to scale.



DALLAS, TEXAS
DALLAS LOVE FLD (DAL)

DALLAS LOVE FLD (DAL)
DALLAS, TEXAS

AL-106 (FAA)

(KNEAD.BACHR4) 24305

AL-106 (FAA)

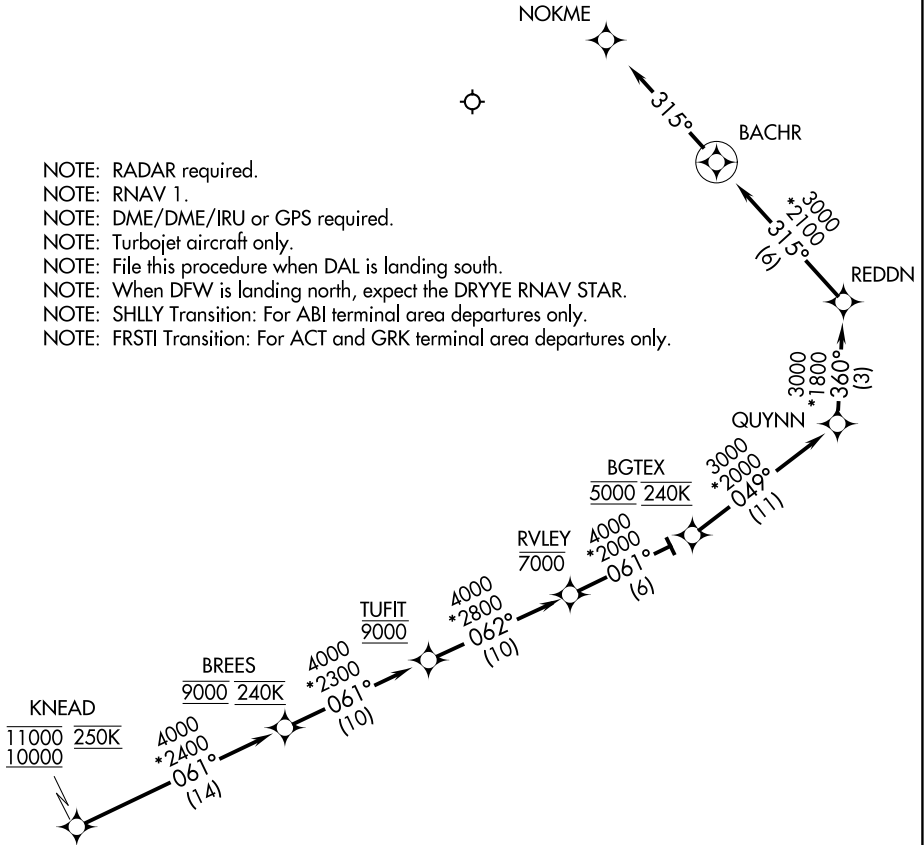
DALLAS LOVE FLD (DAL)

BACHR FOUR ARRIVAL (RNAV) Arrival Route

DALLAS, TEXAS

LONE STAR APP CON
135.975 379.9
D-ATIS
120.15

- NOTE: RADAR required.
- NOTE: RNAV 1.
- NOTE: DME/DME/IRU or GPS required.
- NOTE: Turbojet aircraft only.
- NOTE: File this procedure when DAL is landing south.
- NOTE: When DFW is landing north, expect the DRYYE RNAV STAR.
- NOTE: SHLLY Transition: For ABL terminal area departures only.
- NOTE: FRSTI Transition: For ACT and GRK terminal area departures only.



NOTE: Chart not to scale.

ARRIVAL ROUTE DESCRIPTION

From KNEAD on track 061° to cross BREES at 9000 and at 240K, then on track 061° to cross TUFIT at 9000, then on track 062° to cross RVLEY at or below 7000, then on track 061° to cross BGTEX at 5000 and at 240K, then on track 049° to QUYNN, then on track 360° to REDDN, then on track 315° to BACHR, then on track 315°.

Expect RADAR vectors to final approach course.

BACHR FOUR ARRIVAL (RNAV) Arrival Route

(KNEAD.BACHR4) 26MAY16

DALLAS, TEXAS
DALLAS LOVE FLD (DAL)

SC-2, 26 DEC 2024 to 23 JAN 2025

SC-2, 26 DEC 2024 to 23 JAN 2025