

DALLAS THREE DEPARTURE  
(DAL3 TTT) 25JAN24

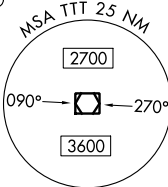
DALLAS LOVE FLD (DAL)  
DALLAS, TEXAS

LONE STAR DEP CON  
118.55 290.35  
D-ATIS  
120.15  
CLNC DEL  
127.9  
CPDLC  
GND CON  
121.75 348.6  
LOVE TOWER  
123.7 239.3

RADAR and DME required.

NOTE: BELCHER Transition: For aircraft inbound to the JAN, MLU, and SHV terminal areas only.  
NOTE: SOLDO Transition: ATC assigned.

LITTLE ROCK  
113.9 LIT  
Chan 86



TEXARKANA  
116.3 TXK  
Chan 110

TOP ALTITUDE:  
RWYS 13L/R: 8000  
RWYS 31L/R: ASSIGNED BY ATC

TAKEOFF MINIMUMS  
Rwys 31L/R: Standard.  
Rwy 13L: Standard with minimum climb of 290'/NM to 1700.  
Rwy 13R: Standard with minimum climb of 315'/NM to 1700.

BELCHER  
117.4 EIC  
Chan 121

GREGG COUNTY  
112.9 GGG  
Chan 76

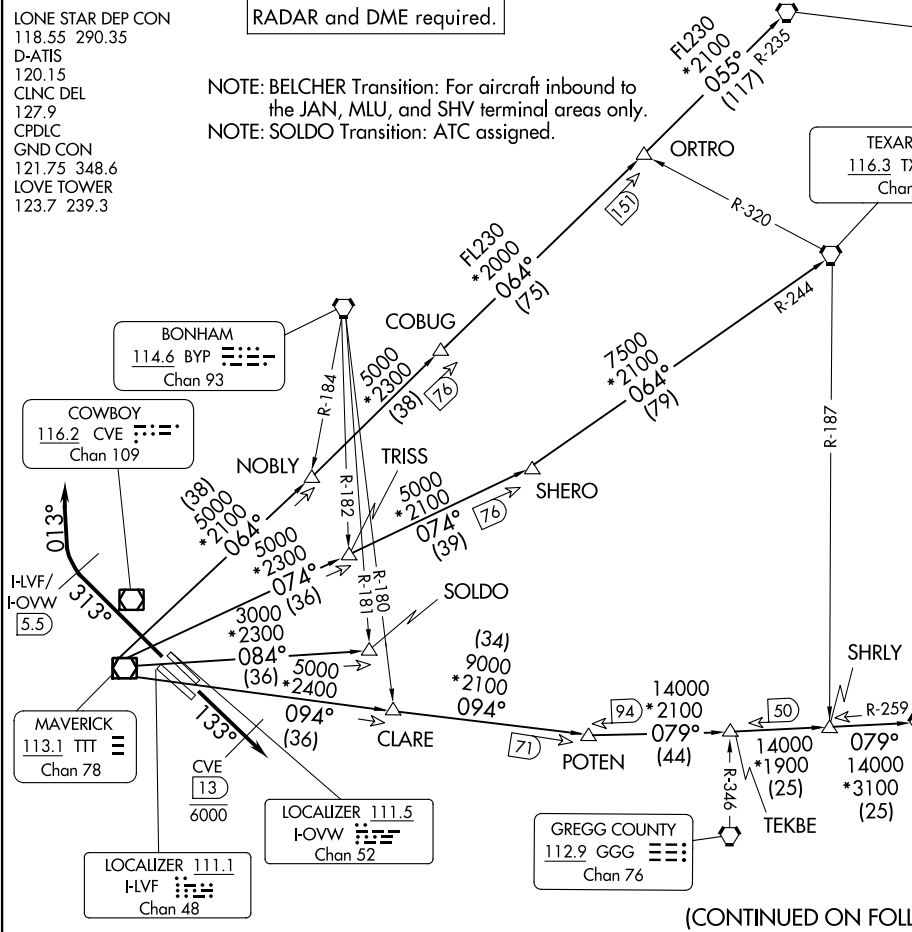
BONHAM  
114.6 BYP  
Chan 93

COWBOY  
116.2 CVE  
Chan 109

MAVERICK  
113.1 TTT  
Chan 78

LOCALIZER 111.1  
ILV  
Chan 48

LOCALIZER 111.5  
LOVW  
Chan 52



(CONTINUED ON FOLLOWING PAGE)

NOTE: Chart not to scale.

DALLAS THREE DEPARTURE  
(DAL3 TTT) 24305

AL-106 (FAA)

DALLAS LOVE FLD (DAL)  
DALLAS, TEXAS

# DALLAS THREE DEPARTURE



## DEPARTURE ROUTE DESCRIPTION

### JETS:

TAKEOFF RUNWAYS 13L/R: Climb on heading 133°, cross CVE 13 DME at or below 6000, then maintain 8000 for RADAR vector to appropriate route and expect filed altitude 10 minutes after departure.

TAKEOFF RUNWAYS 31L/R: Climb on heading 313° until the I-LVF 5.5 DME or I-OVW 5.5 DME, then right turn heading 013° for RADAR vector to the appropriate route, maintain ATC assigned altitude and expect filed altitude 10 minutes after departure.

BELCHER TRANSITION (DALL3.EIC): From over TTT VOR/DME on TTT R-094 to POTEN, then on EIC R-259 to EIC VORTAC.

LITTLE ROCK TRANSITION (DALL3.LIT): From over TTT VOR/DME on TTT R-064 to ORTRO, then on LIT R-235 to LIT VORTAC.

SOLDO TRANSITION (DALL3.SOLDO): From over TTT VOR/DME on TTT R-084 to SOLDO.

TEXARKANA TRANSITION (DALL3.TXK): From over TTT VOR/DME on TTT R-074 to SHERO, then on TXK R-244 to TXK VORTAC.

SC-2, 26 DEC 2024 to 23 JAN 2025

SC-2, 26 DEC 2024 to 23 JAN 2025