

JOE POOL SEVEN DEPARTURE

LONE STAR DEP CON
 125.125 353.95 (Rwys 13L/R)
 118.55 290.35 (Rwys 31L/R)
 D-ATIS 120.15
 CLNC DEL 127.9
 CPDLC
 GND CON 121.75 348.6
 LOVE TOWER 123.7 239.3

RADAR and DME required.

TOP ALTITUDE:
RWYS 13L/13R: 8000
RWYS 31L/31R: ASSIGNED BY ATC

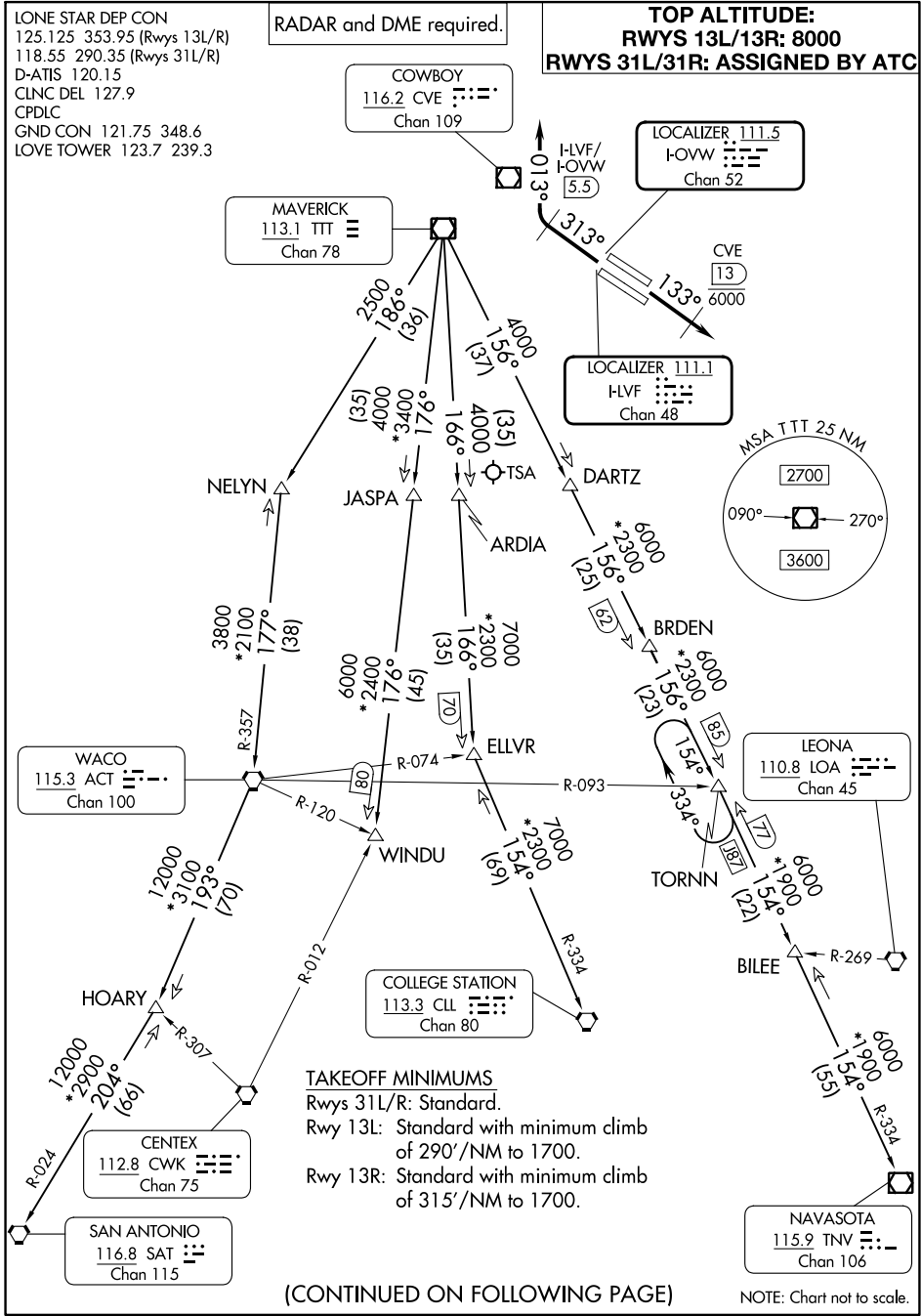
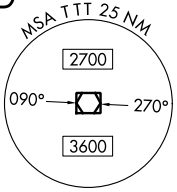
COWBOY
 116.2 CVE : : : :
 Chan 109

LOCALIZER 111.5
 I-OVW : : : : :
 Chan 52

MAVERICK
 113.1 TTT : : :
 Chan 78

LOCALIZER 111.1
 H-LVF : : : : :
 Chan 48

CVE
 13
 6000



TAKEOFF MINIMUMS
 Rwys 31L/R: Standard.
 Rwy 13L: Standard with minimum climb of 290'/NM to 1700.
 Rwy 13R: Standard with minimum climb of 315'/NM to 1700.

(CONTINUED ON FOLLOWING PAGE)

NOTE: Chart not to scale.

SC-2, 26 DEC 2024 to 23 JAN 2025

SC-2, 26 DEC 2024 to 23 JAN 2025

JOE POOL SEVEN DEPARTURE

JOE POOL SEVEN DEPARTURE

DEPARTURE ROUTE DESCRIPTION

JETS

TAKEOFF RUNWAYS 13L/R: Climb on heading 133°, cross CVE 13 DME at or below 6000, then maintain 8000 for RADAR vectors to appropriate route and expect filed altitude 10 minutes after departure.

TAKEOFF RUNWAYS 31L/R: Climb on heading 313° until the I-LVF 5.5 DME or I-OVW 5.5 DME, then right turn heading 013° for RADAR vectors to appropriate route, maintain ATC assigned altitude and expect filed altitude 10 minutes after departure.

COLLEGE STATION TRANSITION (JPOOL7.CLL): From over TTT VOR/DME on TTT R-166 to ELLVR, then on CLL R-334 to CLL VORTAC.

ELLVR TRANSITION (JPOOL7.ELLVR): From over TTT VOR/DME on TTT R-166 to ELLVR.

HOARY TRANSITION (JPOOL7.HOARY): From over TTT VOR/DME on TTT R-186 to NELYN, then on ACT R-357 to ACT VORTAC, then on ACT R-193 to HOARY.

NAVASOTA TRANSITION (JPOOL7.TNV): From over TTT VOR/DME on TTT R-156 to TORNN, then on TNV R-334 to TNV VOR/DME.

SAN ANTONIO TRANSITION (JPOOL7.SAT): From over TTT VOR/DME on TTT R-186 to NELYN, then on ACT R-357 to ACT VORTAC, then on ACT R-193 to HOARY, then on SAT R-024 to SAT VORTAC.

TORNNN TRANSITION (JPOOL7.TORNNN): From over TTT VOR/DME on TTT R-156 to TORNN.

WACO TRANSITION (JPOOL7.ACT): From over TTT VOR/DME on TTT R-186 to NELYN, then on ACT R-357 to ACT VORTAC.

WINDU TRANSITION (JPOOL7.WINDU): From over TTT VOR/DME on TTT R-176 to WINDU.

NOTE: Props departing DAL must contact clearance delivery for departure instructions.

NOTE: COLLEGE STATION Transition: For piston and turboprop aircraft destined to HOU, EFD, GLS, or LBX. Also for all other aircraft types destined to all other Houston terminal area airports except IAH, CXO, DWH, T78 or 6R3.

NOTE: ELLVR Transition: For turbojet aircraft destined to HOU, EFD, GLS, or LBX.

NOTE: SAN ANTONIO Transition: For aircraft overflying Centex and San Antonio.

NOTE: TORNNN Transition: Only for aircraft destined IAH, CXO, DWH, T78 or 6R3.

NOTE: WACO Transition: For aircraft inbound to Waco or Gray terminal area airports.

NOTE: WINDU Transition: For aircraft inbound to Austin or San Antonio terminal area.

SC-2, 26 DEC 2024 to 23 JAN 2025

SC-2, 26 DEC 2024 to 23 JAN 2025

JOE POOL SEVEN DEPARTURE

(JPOOL7.TTT) 25JAN24