

KUSSO ONE DEPARTURE (RNAV)  
(KUSSO1 .KUSSO) 24MAR22

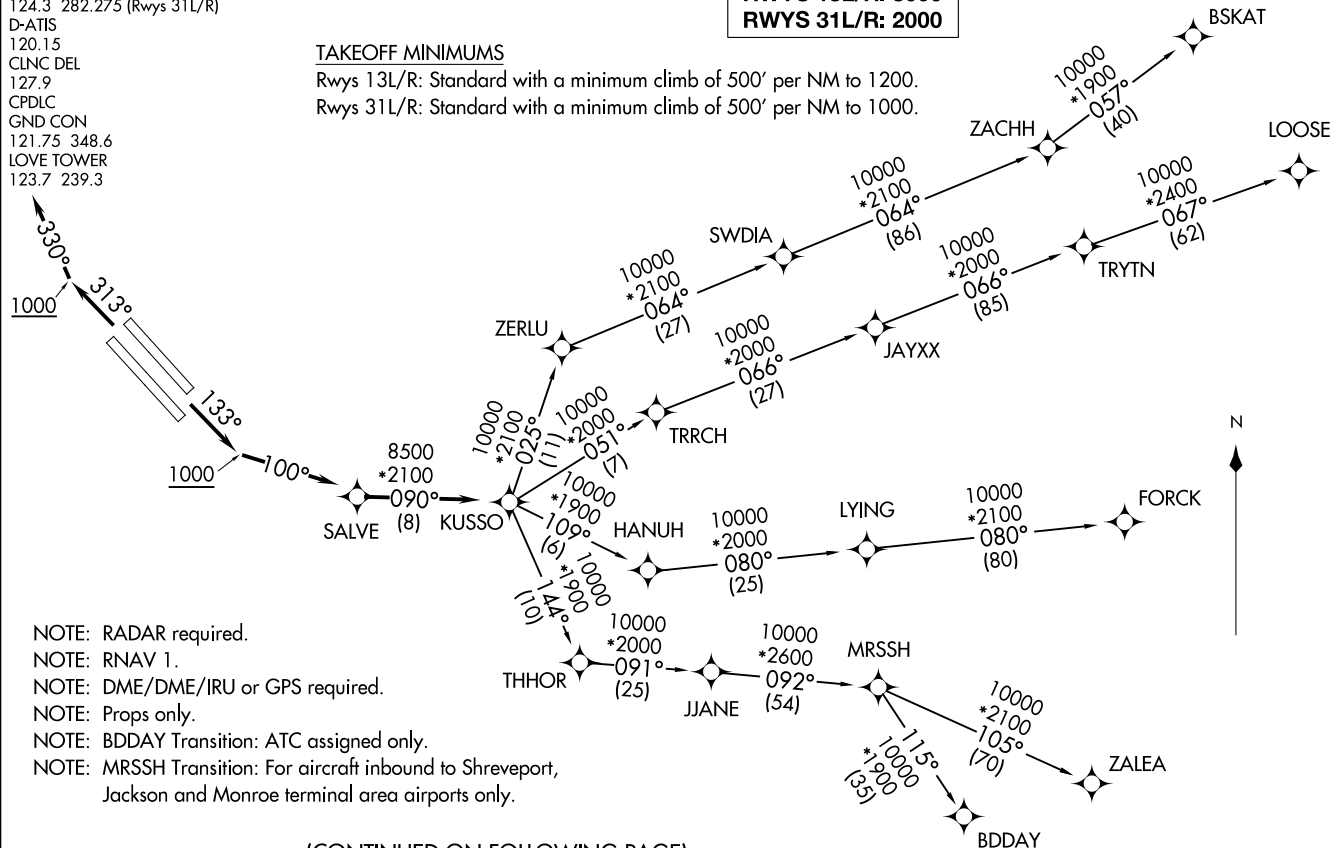
LONE STAR DEP CON  
125.2 343.65 (Rwys 13L/R)  
124.3 282.275 (Rwys 31L/R)  
D-ATIS  
120.15  
CLNC DEL  
127.9  
CPDLC  
GND CON  
121.75 348.6  
LOVE TOWER  
123.7 239.3

**TOP ALTITUDE:  
RWYS 13L/R: 3000  
RWYS 31L/R: 2000**

TAKEOFF MINIMUMS

Rwys 13L/R: Standard with a minimum climb of 500' per NM to 1200.

Rwys 31L/R: Standard with a minimum climb of 500' per NM to 1000.



(KUSSO1 .KUSSO) 24305  
KUSSO ONE DEPARTURE (RNAV)

AL-106 (FAA)

DALLAS LOVE FLD (DAL)  
DALLAS, TEXAS

- NOTE: RADAR required.
- NOTE: RNAV 1.
- NOTE: DME/DME/IRU or GPS required.
- NOTE: Props only.
- NOTE: BDDAY Transition: ATC assigned only.
- NOTE: MRSSH Transition: For aircraft inbound to Shreveport, Jackson and Monroe terminal area airports only.

(CONTINUED ON FOLLOWING PAGE)

NOTE: Chart not to scale.

DALLAS, TEXAS  
DALLAS LOVE FLD (DAL)

# KUSSO ONE DEPARTURE (RNAV)



## DEPARTURE ROUTE DESCRIPTION

TAKEOFF RUNWAYS 13L/R: Climb on heading 133° to 1000, thence . . . .

. . . . left turn heading 100° or as assigned by ATC, expect RADAR vectors to SALVE, then on track 090° to KUSSO, then on (transition). Maintain 3000. Expect filed altitude 10 minutes after departure.

TAKEOFF RUNWAYS 31L/R: Climb on heading 313° to 1000, thence . . . .

. . . . right turn heading 330° or as assigned by ATC, expect RADAR vectors to SALVE, then on track 090° to KUSSO, then on (transition). Maintain 2000. Expect filed altitude 10 minutes after departure.

- BDDAY TRANSITION (KUSSO1.BDDAY)
- BSKAT TRANSITION (KUSSO1.BSKAT)
- FORCK TRANSITION (KUSSO1.FORCK)
- LOOSE TRANSITION (KUSSO1.LOOSE)
- MRSSH TRANSITION (KUSSO1.MRSSH)
- ZALEA TRANSITION (KUSSO1.ZALEA)

SC-2, 26 DEC 2024 to 23 JAN 2025

SC-2, 26 DEC 2024 to 23 JAN 2025