

APP CRS	Rwy Idg	<b>7352</b>
	TDZE	<b>485</b>
<b>133°</b>	Apt Elev	<b>487</b>

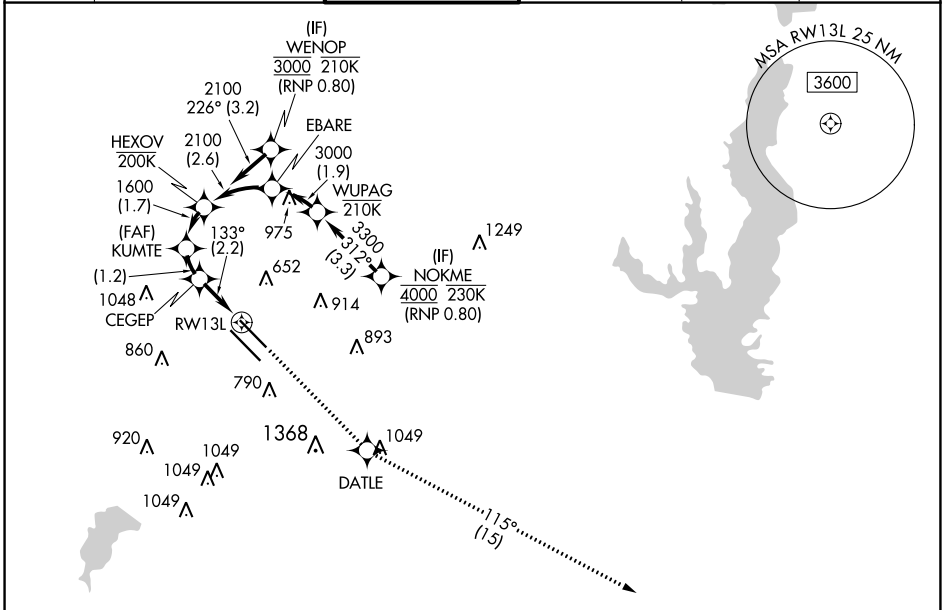
# RNAV (RNP) W RWY 13L

DALLAS LOVE FLD (DAL)

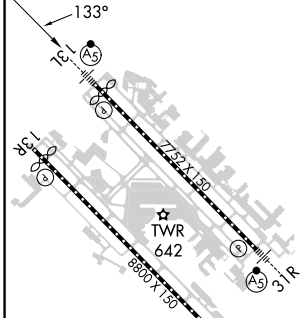
RNP AR APCH. RF required.

MALSR		MISSED APPROACH: Climb to 3000 direct DATLE and on track 115° to DUMPY and hold.

D-ATIS	LONE STAR APP CON	LOVE TOWER	GND CON	CLNC DEL	CPDLC
<b>120.15</b>	NORTH <b>124.3 282.275</b> SOUTH <b>125.2 343.65</b>	<b>123.7 239.3</b>	<b>121.75 348.6</b>	<b>127.9</b>	

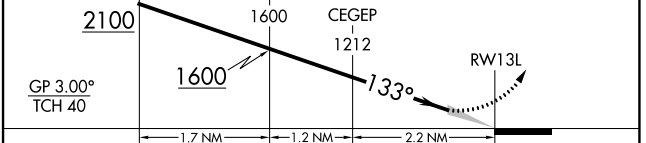


ELEV	<b>487</b>	<b>D</b>	TDZE	<b>485</b>
------	------------	----------	------	------------



See planview for multiple IF locations.

3000	DATLE	tr 115°	DUMPY
------	-------	---------	-------



CATEGORY	A	B	C	D
RNP 0.11 DA	754/24		269 (300-½)	
RNP 0.30 DA	846/40		361 (400-¾)	

TDZ/CL Rwy 13L and 31L  
HIRL Rwy 13L-31R, and 13R-31L

# RNAV (RNP) W RWY 13L

SC-2, 26 DEC 2024 to 23 JAN 2025

SC-2, 26 DEC 2024 to 23 JAN 2025