

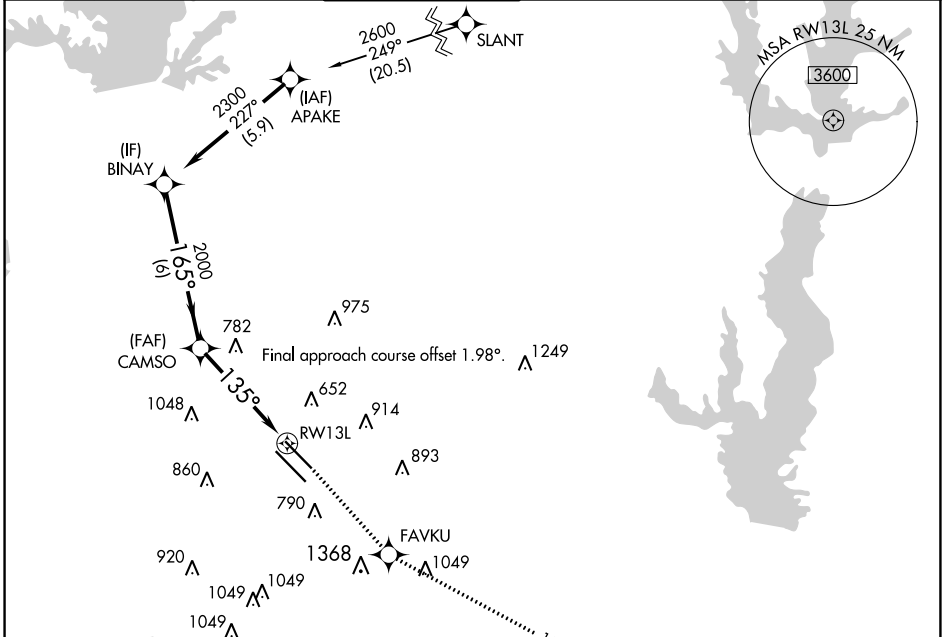
APP CRS	Rwy Idg	<b>7352</b>
<b>135°</b>	TDZE	<b>485</b>
	Apt Elev	<b>487</b>

# RNAV (GPS) Y RWY 13L

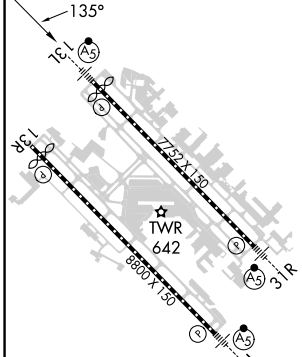
DALLAS LOVE FLD (DAL)

RNP APCH - GPS.	MALSR	MISSED APPROACH: Climb to 3000 direct FAVKU and on track 115° to DUMPY and hold.
<p>▼ For inop ALS, increase LNAV Cats C/D visibility to 1¾ SM.</p> <p>▲</p>		

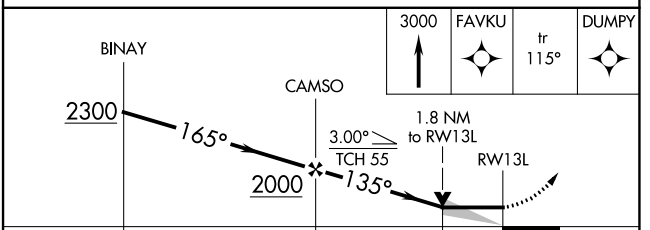
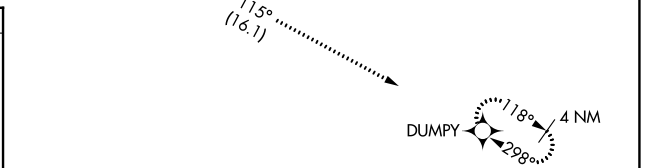
D-ATIS <b>120.15</b>	LONE STAR APP CON NORTH <b>124.3 282.275</b> SOUTH <b>125.2 343.65</b>	LOVE TOWER <b>123.7 239.3</b>	GND CON <b>121.75 348.6</b>	CLNC DEL <b>127.9</b>	CPDLC
-------------------------	--	----------------------------------	--------------------------------	--------------------------	-------



ELEV <b>487</b>	<b>D</b>	TDZE <b>485</b>
-----------------	----------	-----------------



TDZ/CL Rwy 13L and 31L	HIRL Rwy 13L-31R, and 13R-31L
------------------------	-------------------------------



CATEGORY	A	B	C	D
LNAV MDA	1100/24	615 (700-½)	1100-1⅓	615 (700-1⅓)
<b>C</b> CIRCLING	1100-1 613 (700-1)	1140-1 653 (700-1)	1220-2 733 (800-2)	1520-3 1033 (1100-3)

SC-2, 26 DEC 2024 to 23 JAN 2025

SC-2, 26 DEC 2024 to 23 JAN 2025