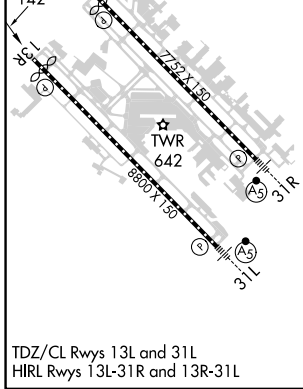
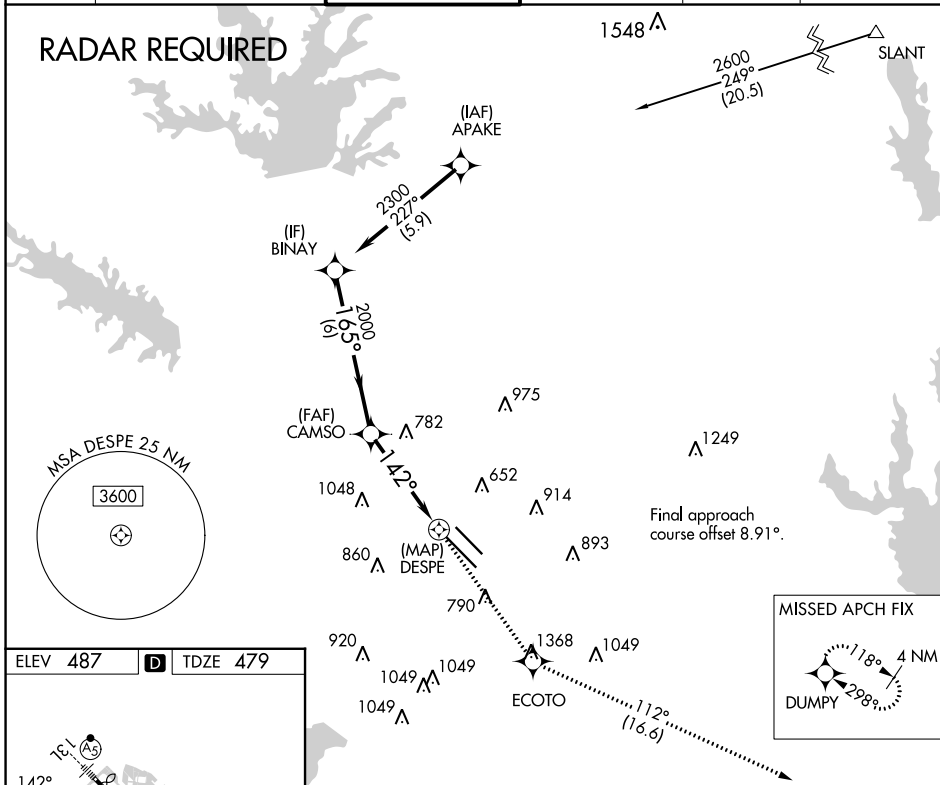


APP CRS	Rwy Idg	8310
142°	TDZE	479
	Apt Elev	487

RNAV (GPS) Y RWY 13R

DALLAS LOVE FLD (DAL)

RNP APCH.		MISSED APPROACH: Climb to 5000 direct ECOTO and on track 112° to DUMPY and hold.			
D-ATIS	LONE STAR APP CON	LOVE TOWER	GND CON	CLNC DEL	CPDLC
120.15	NORTH 124.3 282.275 SOUTH 125.2 343.65	123.7 239.3	121.75 348.6	127.9	



ELEV	487	D	TDZE	479								
<table border="1"> <tr> <td>5000</td> <td>ECOTO</td> <td>tr 112°</td> <td>DUMPY</td> </tr> <tr> <td>↑</td> <td>✧</td> <td></td> <td>✧</td> </tr> </table>					5000	ECOTO	tr 112°	DUMPY	↑	✧		✧
5000	ECOTO	tr 112°	DUMPY									
↑	✧		✧									
<p>BINAY 2300 165° CAMSO 2000 142° DESPE 0.7 NM to DESPE</p> <p>6 NM 3.5 NM 0.7</p>												
CATEGORY	A	B	C	D								
LNAV MDA	920/55	441 (500-1)	920-1 3/8	441 (500-1 3/8)								
CIRCLING	1080-1 593 (600-1)	1140-1 653 (700-1)	1220-2 733 (800-2)	1520-3 1033 (1100-3)								

DALLAS, TEXAS
Orig-B 13SEP18

32°51'N-96°51'W

RNAV (GPS) Y RWY 13R

SC-2, 26 DEC 2024 to 23 JAN 2025

SC-2, 26 DEC 2024 to 23 JAN 2025