

WAAS CH 72808 W31A	APP CRS 313°	Rwy Idg TDZE 477 Apt Elev 487
----------------------------------------	------------------------	---------------------------------------------------

RNAV (GPS) Y RWY 31L

DALLAS LOVE FLD (DAL)

RNP APCH.

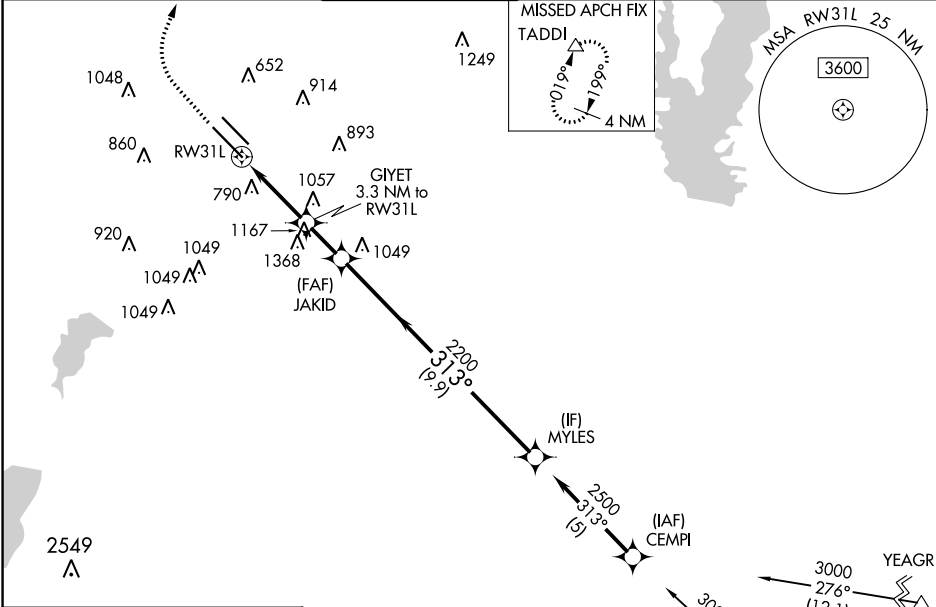
▼ Simultaneous approach authorized. Use of FD or AP providing RNAV track guidance required during simultaneous operations. LNAV procedure NA during simultaneous operations. For inop ALS, increase LPV all Cats visibility to RVR 4500.

MALSR



MISSED APPROACH: Climb to 1700 then climbing right turn to 4000 direct TADDI and hold.

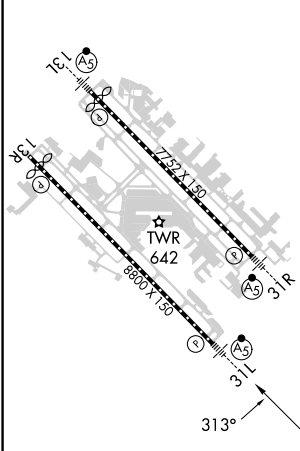
D-ATIS 120.15	LONE STAR APP CON NORTH 124.3 282.275 SOUTH 125.2 343.65	LOVE TOWER 123.7 239.3	GND CON 121.75 348.6	CLNC DEL 127.9	CPDLC
-------------------------	------------------------------------------------------------------------------	----------------------------------	--------------------------------	--------------------------	-------



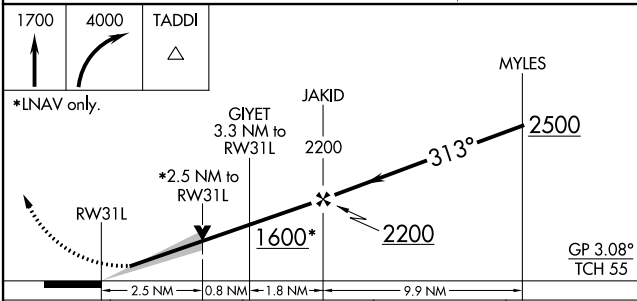
SC-2, 26 DEC 2024 to 23 JAN 2025

SC-2, 26 DEC 2024 to 23 JAN 2025

ELEV 487	D	TDZE 477
----------	----------	----------



TDZ/CL Rwy 13L and 31L
HIRL Rwy 13L-31R, and 13R-31L



CATEGORY	A	B	C	D
LPV DA	770/22 293 (300-½)			
LNAV MDA	1360/40	883 (900-¾)	1360-2	883 (900-2)
C CIRCLING	1360-1¼	873 (900-1¼)	1360-2½	1520-3
			873 (900-2½)	1033 (1100-3)