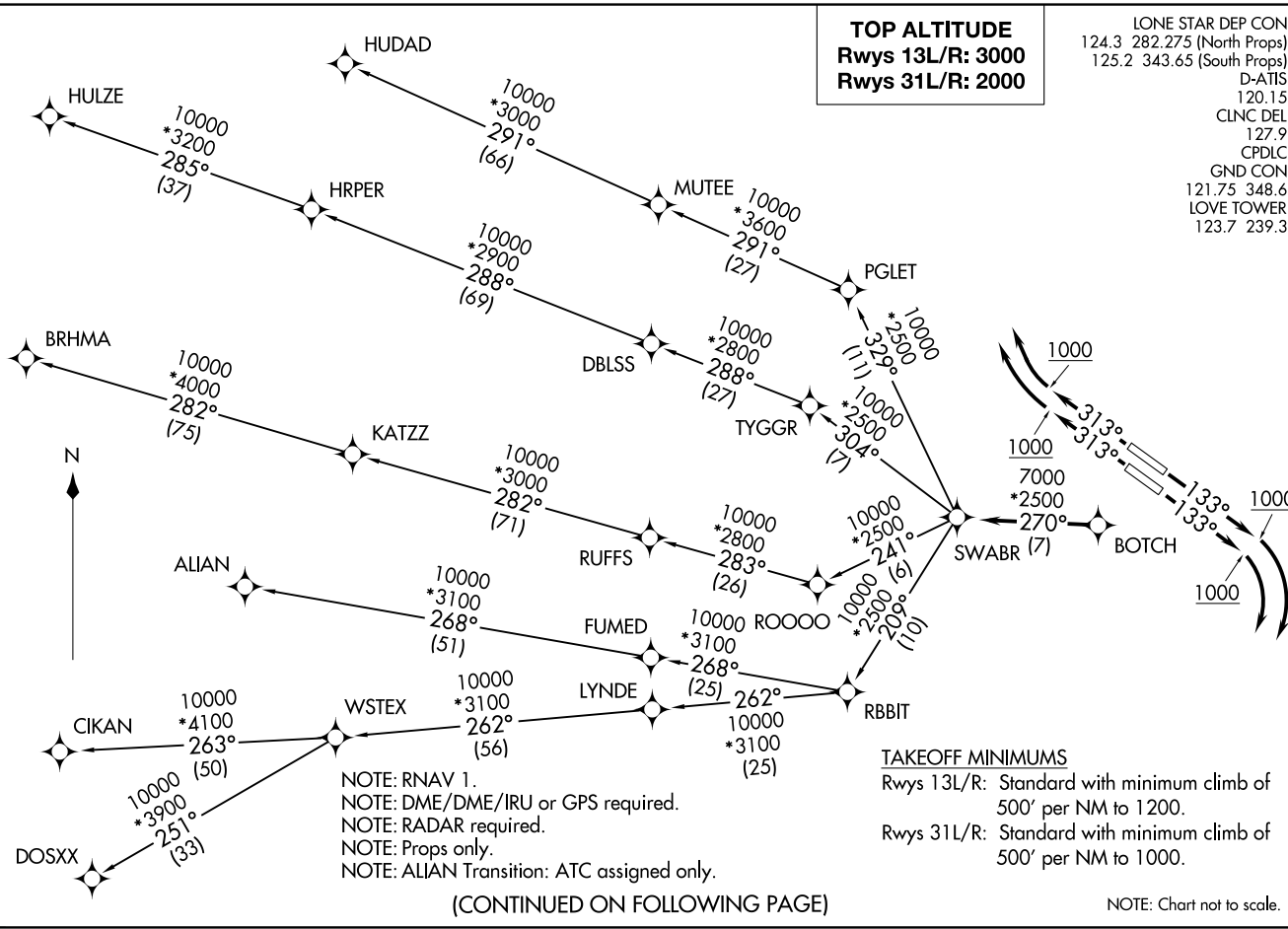


SWABR ONE DEPARTURE (RNAV)
(SWABR1 .SWABR) 24MAR22

DALLAS, TEXAS
DALLAS LOVE FLD (DAL)



(SWABR1 .SWABR) 24305
SWABR ONE DEPARTURE (RNAV)

DALLAS, TEXAS
DALLAS LOVE FLD (DAL)

SWABR ONE DEPARTURE (RNAV)



DEPARTURE ROUTE DESCRIPTION

TAKEOFF RUNWAYS 13L/R: Climb on heading 133° to 1000, thence. . . .
 . . . right turn heading 193° or as assigned by ATC, expect RADAR vectors to BOTCH,
 then on track 270° to SWABR, then on (transition). Maintain 3000. Expect filed
 altitude 10 minutes after departure.

TAKEOFF RUNWAYS 31L/R: Climb on heading 313° to 1000, thence. . . .
 . . . right turn heading 333° or as assigned by ATC, expect RADAR vectors to BOTCH,
 then on track 270° to SWABR, then on (transition). Maintain 2000. Expect filed
 altitude 10 minutes after departure.

- ALIAN TRANSITION (SWABR1.ALIAN)
- BRHMA TRANSITION (SWABR1.BRHMA)
- CIKAN TRANSITION (SWABR1.CIKAN)
- DOSXX TRANSITION (SWABR1.DOSXX)
- HUDAD TRANSITION (SWABR1.HUDAD)
- HULZE TRANSITION (SWABR1.HULZE)
- WSTEX TRANSITION (SWABR1.WSTEX)

SC-2, 26 DEC 2024 to 23 JAN 2025

SC-2, 26 DEC 2024 to 23 JAN 2025