

LOC I-ATD 108.9	APP CRS 061°	Rwy Idg 10900 TDZE 998 Apt Elev 1009
---------------------------	------------------------	---

ILS or LOC RWY 6L

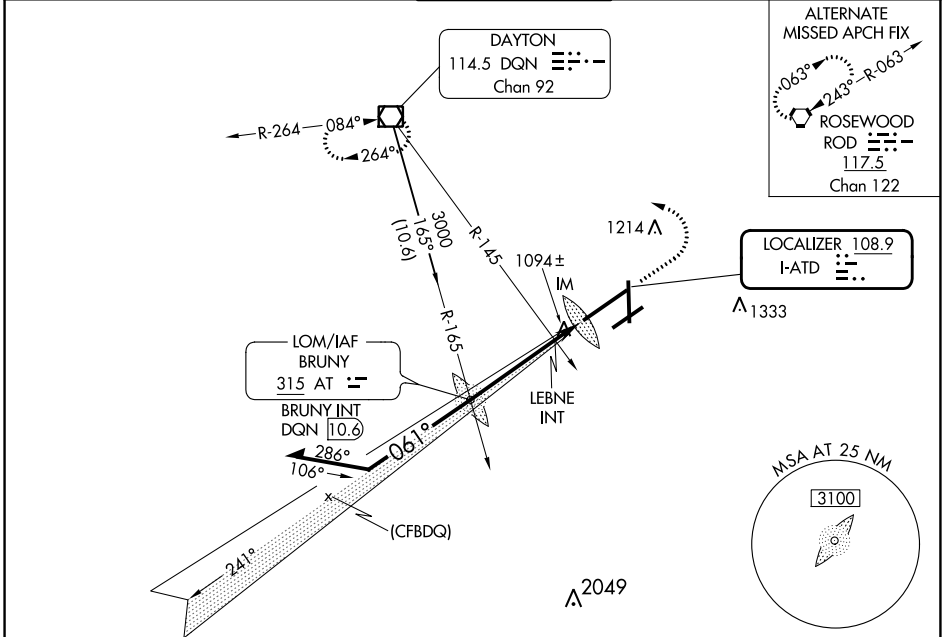
JAMES M COX DAYTON INTL (DAY)

Simultaneous approach authorized.
 For inop ALSF-2, increase S-LOC 6L Cat C/D visibility to 1½ mile.

ALSF-2

MISSED APPROACH: Climb to 2000 then climbing left turn to 3000 direct DQN VOR/DME and hold.

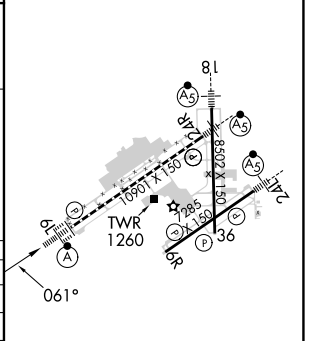
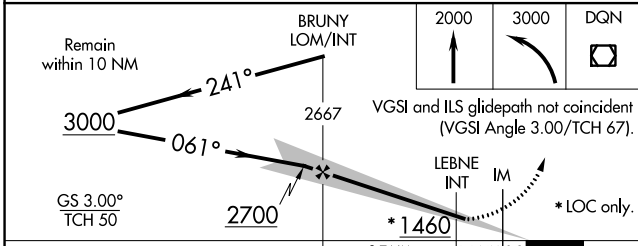
ATIS 125.8	COLUMBUS APP CON 134.45 323.15	DAYTON TOWER 119.9 257.7	GND CON 121.9	CINC DEL 121.75
----------------------	--	------------------------------------	-------------------------	---------------------------



EC-2, 26 DEC 2024 to 23 JAN 2025

EC-2, 26 DEC 2024 to 23 JAN 2025

ELEV 1009	D	TDZE 998
-----------	----------	----------



CATEGORY	LEBNE FIX MINIMUMS (DUAL VOR RECEIVERS REQUIRED)			
	A	B	C	D
S-ILS 6L	1198/18 200 (200-½)			
S-LOC 6L	1460/24	462 (500-½)	1460/50	462 (500-1)
C CIRCLING	1580-1	571 (600-1)	1580-1½ 571 (600-1½)	1640-2 631 (700-2)
S-LOC 6L	1380/24	382 (400-½)	1380/35	382 (400-¾)
C CIRCLING	1580-1	571 (600-1)	1580-1½ 571 (600-1½)	1640-2 631 (700-2)

HRL all Rwys					
TDZ/CL Rwy 6L					
REIL Rwys 6R and 36					
FAF to MAP 5 NM					
Knots	60	90	120	150	180
Min:Sec	5:00	3:20	2:30	2:00	1:40