

APP CRS 005°	Rwy Idg 8502
	TDZE 1008
	Apt Elev 1009

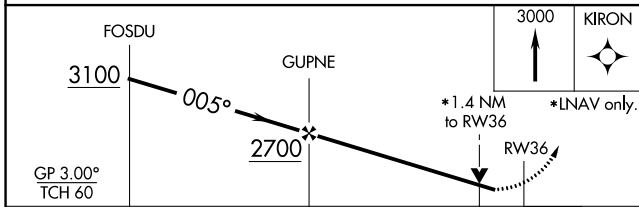
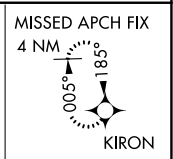
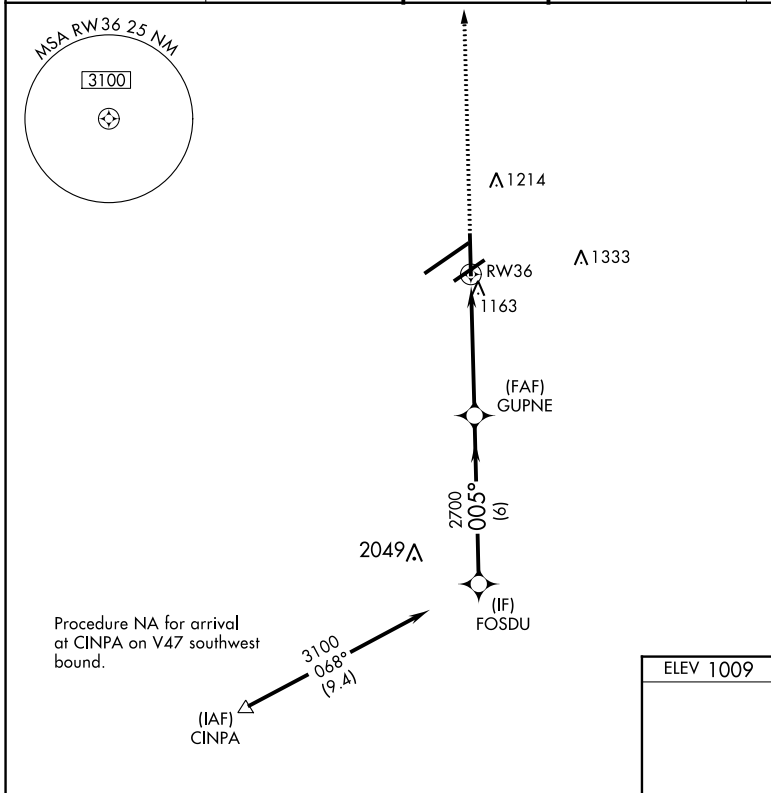
RNAV (GPS) RWY 36

JAMES M COX DAYTON INTL (DAY)

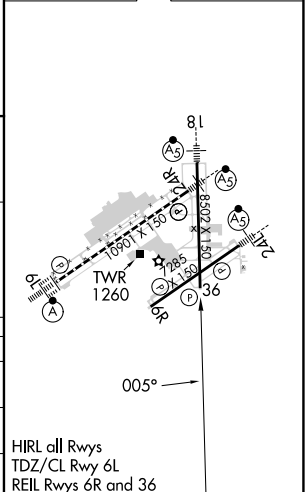
⚠ For uncompensated Baro-VNAV systems, LNAV/VNAV NA below -19°C (-2°F) or above 54°C (130°F). DME/DME RNP-0.3 NA.
Rwy 36 helicopter visibility reduction below 3/4 SM NA.

MISSED APPROACH: Climb to 3000 direct to KIRON and hold.

ATIS 125.8	COLUMBUS APP CON 134.45 323.15	DAYTON TOWER 119.9 257.7	GND CON 121.9	CLNC DEL 121.75
----------------------	------------------------------------------	------------------------------------	-------------------------	---------------------------



ELEV 1009	D	TDZE 1008
-----------	----------	-----------



	6 NM		3.7 NM		1.4	
CATEGORY	A	B	C	D		
LNAV/VNAV DA	1449-1½		441 (500-1½)			
LNAV MDA	1500-1	492 (500-1)	1500-1½	492 (500-1½)	1500-1½	492 (500-1½)
C CIRCLING	1580-1	571 (600-1)	1580-1½	571 (600-1½)	1640-2	631 (700-2)

HIRL all Rwys
TDZ/CL Rwy 6L
REIL Rwys 6R and 36

EC-2, 26 DEC 2024 to 23 JAN 2025

EC-2, 26 DEC 2024 to 23 JAN 2025