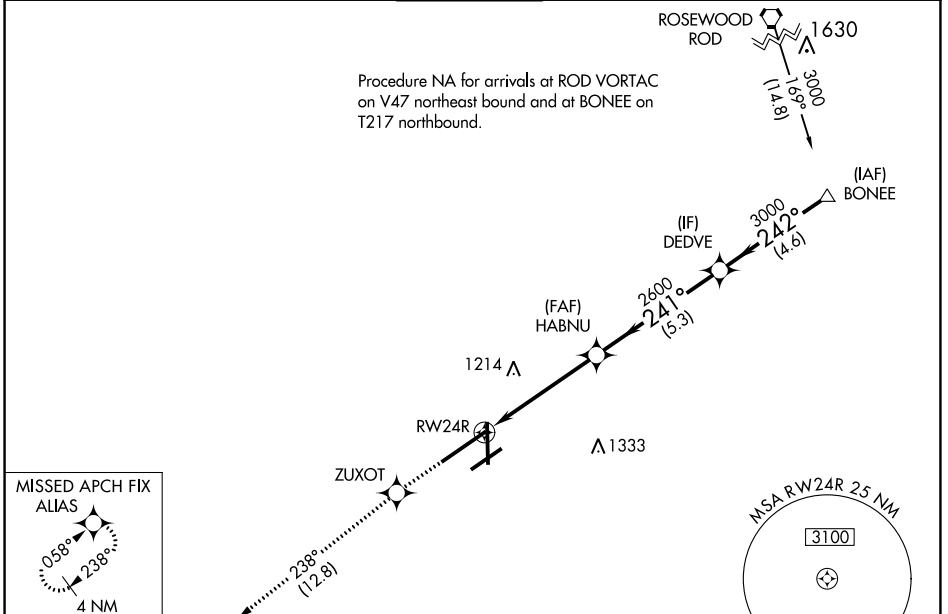


WAAS CH <b>66013</b> <b>W24B</b>	APP CRS <b>241°</b>	Rwy Idg <b>10900</b> TDZE <b>997</b> Apt Elev <b>1009</b>
--	------------------------	---

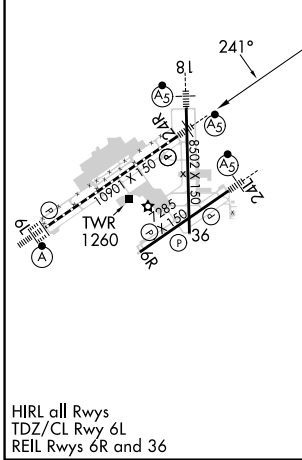
# RNAV (GPS) Z RWY 24R

JAMES M COX DAYTON INTL (DAY)

RNP APCH.		For uncompensated Baro-VNAV systems, LNAV/VNAV NA below -19°C or above 54°C. Simultaneous approach authorized. LNAV procedure NA during simultaneous operations. Use of FD or AP required during simultaneous operations. For inop ALS, increase LNAV/VNAV all Cats visibility to RVR 4500.		MALSR 	MISSED APPROACH: Climb to 3000 direct ZUXOT and on track 238° to ALIAS and hold.
ATIS <b>125.8</b>	COLUMBUS APP CON <b>134.45 323.15</b>	DAYTON TOWER <b>119.9 257.7</b>	GND CON <b>121.9</b>	CLNC DEL <b>121.75</b>	



ELEV 1009	<b>D</b>	TDZE 997
-----------	----------	----------



3000	ZUXOT	tr 238°	ALIAS				
	HABNU	2600	DEDVE	BONEE			
*LNAV only.							
	RW24R	*1.2 NM to RW24R	2600	241°	3000	3000	GP 3.00° TCH 55
	1.2 NM	3.7 NM	5.3 NM	4.6 NM			
CATEGORY	A	B	C	D			
LPV DA		1203/24	206 (200-½)				
LNAV/VNAV DA		1294/24	297 (300-½)				
LNAV MDA	1440/24	443 (500-½)	1440/45	443 (500-¾)			
<b>C</b> CIRCLING	1580-1	571 (600-1)	1580-1½ 571 (600-1½)	1640-2 631 (700-2)			

EC-2, 26 DEC 2024 to 23 JAN 2025

EC-2, 26 DEC 2024 to 23 JAN 2025