

# ILS or LOC RWY 23R

WRIGHT-PATTERSON AFB (KFFO)

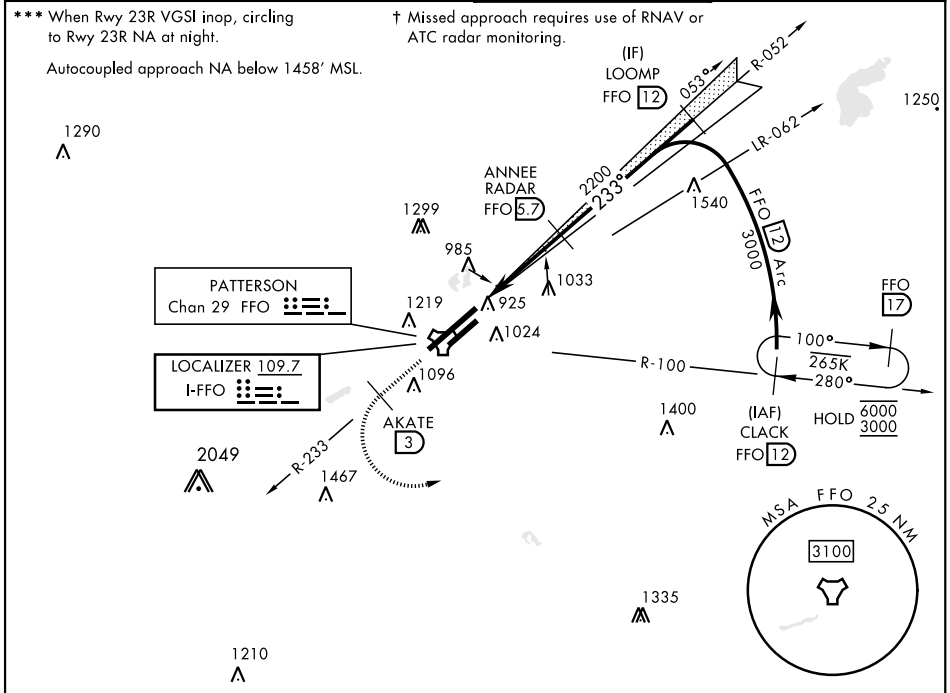
LOC I-FFO <b>109.7</b>	APCH CRS <b>233°</b>	Rwy Idg <b>12,600</b> THRE <b>823</b> Arprt Elev <b>823</b>	[USAF]
---------------------------	-------------------------	---	--------

DME or RADAR required for Localizer.

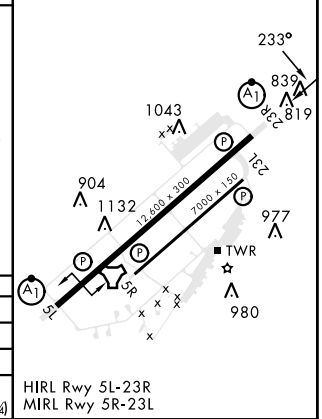
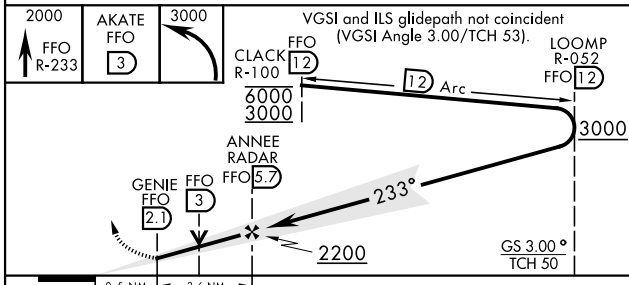
ALSF-1 † MISSED APPROACH: Climb via FFO R-233 to 2000, at 3 DME turn left direct CLACK to 3000 and hold.

▼ \*When ALS inop, increase RVR to 40 and vis to ¼ mile.  
 \*\*When ALS inop, increase CAT AB RVR to 55 and vis to 1 mile, CAT CDE vis to 1⅓ miles.

ATIS <b>124.475 269.9</b>	COLUMBUS APP CON <b>118.85 269.275</b>	PATTERSON TOWER <b>127.8 281.45</b>	GND CON <b>121.8 335.8</b>
------------------------------	---	--	-------------------------------



EMERG SAFE ALT 100 NM 3700	ELEV 823	THRE 823
----------------------------	----------	----------



CATEGORY	A	B	C	D	E
S-ILS 23R*	1023/24		200	(200-½)	
S-LOC 23R**	1320/24	497 (500-½)	1320/50	497 (500-1)	
CIRCLING***	1380-1	1440-1	1560-2	1620-2½	1620-2¾
	557 (600-1)	617 (600-1)	737 (800-2)	797 (800-2½)	797 (800-2¾)

HIRL Rwy 5L-23R  
MIRL Rwy 5R-23L

# ILS or LOC RWY 23R

EC-2, 26 DEC 2024 to 23 JAN 2025

EC-2, 26 DEC 2024 to 23 JAN 2025