

DAYTON, OHIO

RNAV (GPS) RWY 23L

24305

| | | |
|----------|-----------|------|
| APCH CRS | Rwy Idg | 7000 |
| 233° | TDZE | 818 |
| | Arpt Elev | 823 |

(USAF)

WRIGHT PATTERSON AFB (KFFO)

▼ * When Rwy 23R VGSI inop, circling to Rwy 23R NA at night.

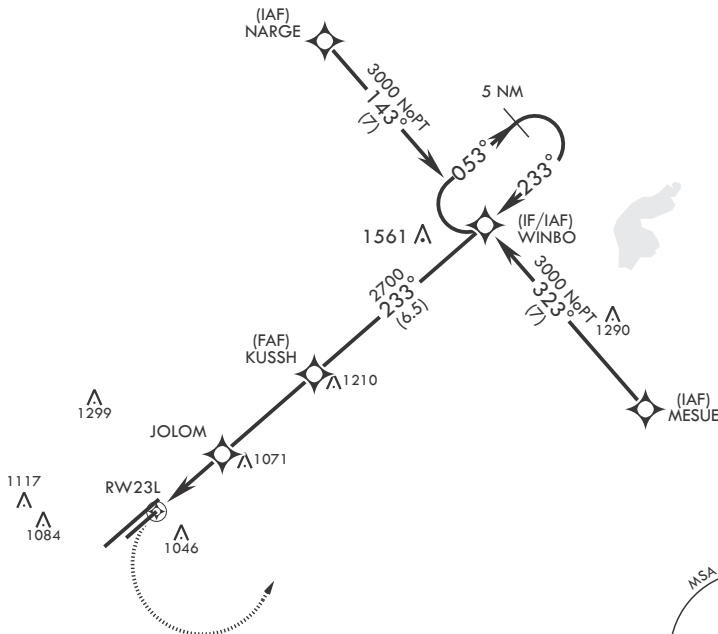
MISSED APPROACH: Turn left climb to 3000 direct WINBO WPT and hold.

| | | | |
|------------------------------|---|--|-------------------------------|
| ATIS 124.475 269.9 | COLUMBUS APP CON/DEP CON 118.85 269.275 | PATTERSON TOWER 127.8 281.45 | GND CON 121.8 335.8 |
|------------------------------|---|--|-------------------------------|

DME/DME RNP -0.3 NA

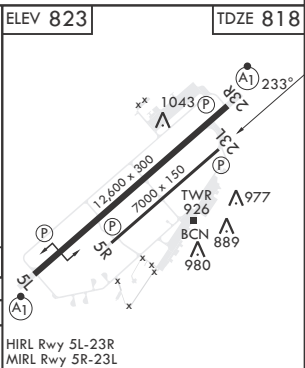
LNAV Visibility Reduction by Helicopters NA.

1323



EMERG SAFE ALT 100 NM 3300

| | | | | |
|--|-----------------------|-----------------------|-----------------------|--|
| WINBO VGSI and descent angle not coincident. | 5 NM Holding Pattern | ELEV 823 | TDZE 818 | |
| | | | | |
| CATEGORY | A | B | C | D |
| LNAV MDA | 1320-1 | 502 (500-1) | 1320-1 $\frac{3}{8}$ | 502 (500-1 $\frac{1}{2}$) |
| CIRCLING* | 1380-1 557 (600-1) | 1440-1 617 (700-1) | 1560-2 737 (800-2) | 1620-2 $\frac{1}{2}$ 797 (800-2 $\frac{1}{2}$) |



DAYTON, OHIO

39°50'N - 84°03'W

WRIGHT PATTERSON AFB (KFFO)

Amdt 6 29MAR18

RNAV (GPS) RWY 23L

EC-2, 26 DEC 2024 to 23 JAN 2025

EC-2, 26 DEC 2024 to 23 JAN 2025