

DAYTON, OHIO

# RNAV (GPS) RWY 23R

24305

APCH CRS	Rwy Idg	12,600
233°	TDZE	823
	Arprt Elev	823

- (USAF)

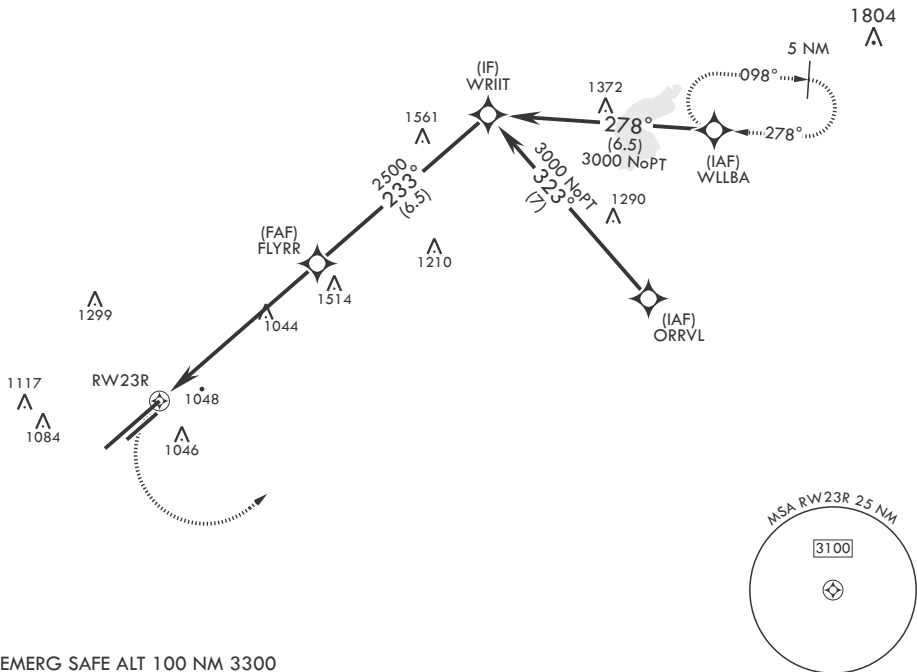
WRIGHT PATTERSON AFB (KFFO)

<p><b>▼</b> * When ALS inop, increase CAT AB RVR to 55, vis to 1 mile; CAT CD vis to 1 3/8 miles. ** When Rwy 23R VGSI inop, circling to Rwy 23R NA at night.</p>	<p>ALS-1</p>	<p>MISSED APPROACH: Turn left climb to 3000 direct WLLBA waypoint and hold.</p>
---	--------------	---

<p>ATIS</p> <p>124.475 269.9</p>	<p>COLUMBUS APP CON/DEP CON</p> <p>118.85 269.275</p>	<p>PATTERSON TOWER</p> <p>127.8 281.45</p>	<p>GND CON</p> <p>121.8 335.8</p>
----------------------------------	---	--	-----------------------------------

DME/DME RNP-0.3 NA

1323



EMERG SAFE ALT 100 NM 3300

<p>3000</p> <p>VGSI and descent angles not coincident. (VGSI angle 3.00 TCH 53)</p>	<p>WRIT</p> <p>3000</p>	<p>ELEV 823</p>	<p>TDZE 823</p>	
	<p>FLYRR</p> <p>2500</p> <p>233°</p> <p>≤ 2.55° TCH 53</p>			
<p>CATEGORY</p>	<p>A</p>	<p>B</p>	<p>C</p>	<p>D</p>
<p>LNAV MDA*</p>	<p>1320/24</p>	<p>497 (500-½)</p>	<p>1320/50</p>	<p>497 (500-1)</p>
<p><b>Ⓢ</b> CIRCLING**</p>	<p>1380-1</p> <p>557 (600-1)</p>	<p>1440-1</p> <p>617 (700-1)</p>	<p>1560-2</p> <p>737 (800-2)</p>	<p>1620-2½</p> <p>797 (800-2½)</p>
<p>HIRL Rwy 5L-23R MIRL Rwy 5R-23L</p>				

DAYTON, OHIO

39°50'N - 84°03'W

WRIGHT PATTERSON AFB (KFFO)

Amdt 5 13OCT16

# RNAV (GPS) RWY 23R

EC-2, 26 DEC 2024 to 23 JAN 2025

EC-2, 26 DEC 2024 to 23 JAN 2025