

# RNAV (GPS) RWY 5L

|          |            |        |
|----------|------------|--------|
| APCH CRS | Rwy Idg    | 12,600 |
| 053°     | TDZE       | 803    |
|          | Arprt Elev | 823    |

- (USAF)

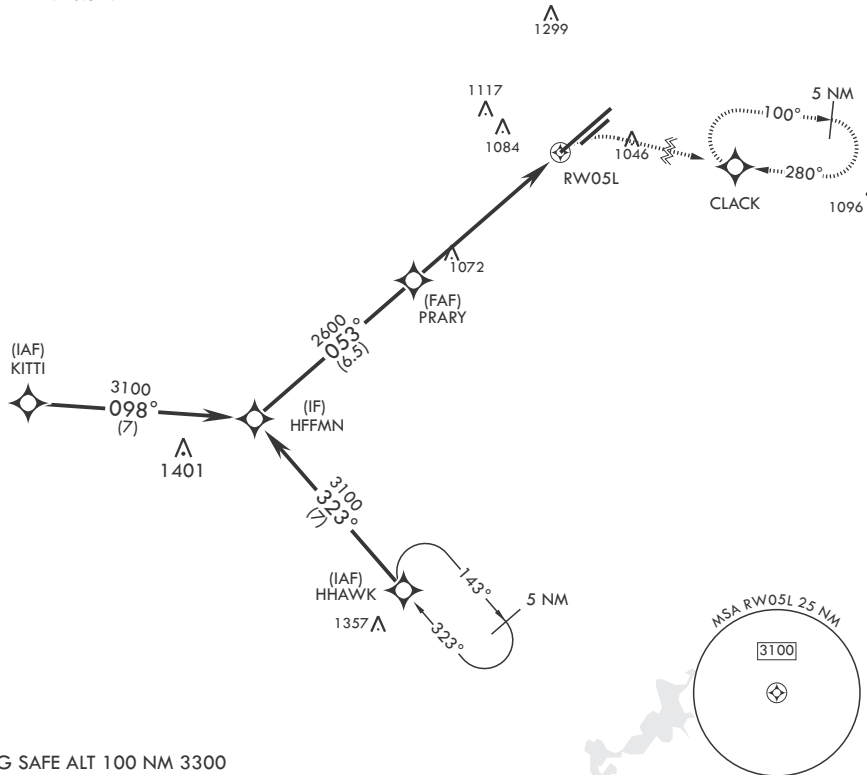
WRIGHT PATTERSON AFB (KFFO)

**▼** \* When ALS inop increase CAT AB RVR to 55, vis to 1 mile; CAT CD vis to 1 5/8 miles.  
 \*\* When Rwy 23R VGSI inop, circling to Rwy 23R NA at night.

ALSF-1 MISSED APPROACH: Turn right climb to 3100 direct CLACK WPT and hold.

|                       |  |                                 |                        |
|-----------------------|--|---------------------------------|------------------------|
| ATIS<br>124.475 269.9 | COLUMBUS APP CON/DEP CON<br>118.85 269.275 | PATTERSON TOWER<br>127.8 281.45 | GND CON<br>121.8 335.8 |
|-----------------------|--|---------------------------------|------------------------|

DME/DME RNP-0.3 NA



EMERG SAFE ALT 100 NM 3300

|            |  |                       |                       |                         |          |
|------------|--|-----------------------|-----------------------|-------------------------|----------|
| HFFMN      | VGSI and descent angles not coincident (VGSI angle 3.00/TCH 51). | 3100                  | CLACK                 | ELEV 823                | TDZE 803 |
| 3100       | 053°   | PRARY                 | 2600                  | 1.6 NM to RW05L         | RW05L    |
|            |  | 2.74° > TCH 50        |                       | 6 NM                    |          |
| CATEGORY   | A  | B                     | C                     | D                       |          |
| LNAV MDA*  | 1380/24  | 577 (600-½)           | 1380-1¼               | 577 (600-1¼)            |          |
| CIRCLING** | 1380-1<br>557 (600-1)  | 1440-1<br>617 (700-1) | 1560-2<br>737 (800-2) | 1620-2½<br>797 (800-2½) |          |

# RNAV (GPS) RWY 5L

EC-2, 26 DEC 2024 to 23 JAN 2025

EC-2, 26 DEC 2024 to 23 JAN 2025