

DAYTON, OHIO

# TACAN RWY 5L

TACAN FFO Chan <b>29</b>	APCH CRS <b>059°</b>	Rwy ldg <b>12,600</b> TDZE <b>803</b> Arprt Elev <b>823</b>
--------------------------	----------------------	---

[USAF]

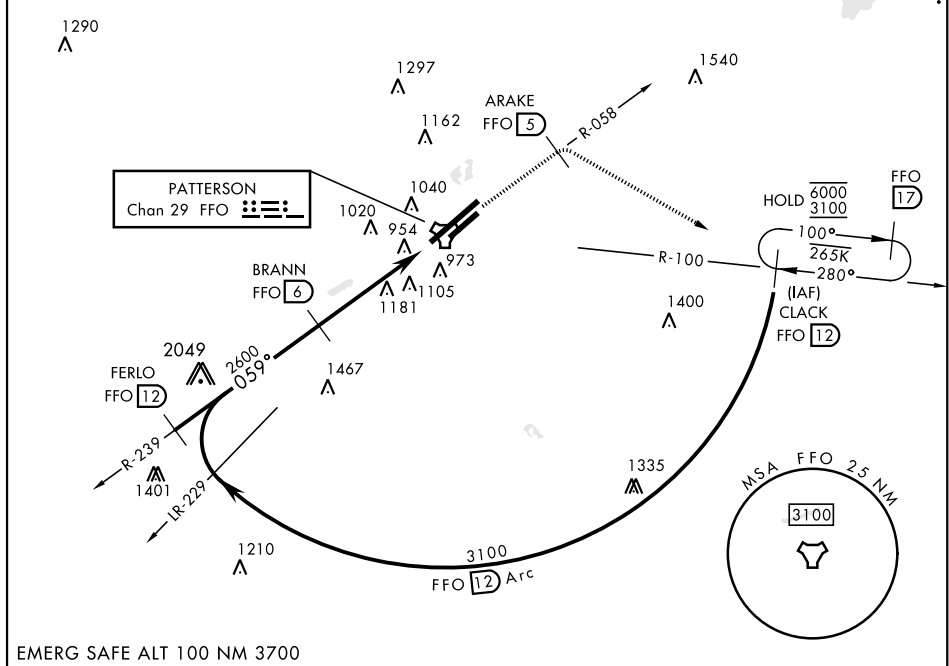
WRIGHT-PATTERSON AFB (KFFO)

▼ \* When ALS inop, increase RVR CAT AB to 55 and vis to 1 mile, CAT CDE vis to 1¾ miles.  
 \*\* When Rwy 23R VGSI inop, circling to Rwy 23R NA at night.

ALSf-1 MISSED APPROACH: Climb to 2000 via FFO R-058 to 5 DME, turn right direct CLACK climbing to 3100 and hold.

ATIS <b>124.475 269.9</b>	COLUMBUS APP CON <b>118.85 269.275</b>	PATTERSON TOWER <b>127.8 281.45</b>	GND CON <b>121.8 335.8</b>
------------------------------	---	--	-------------------------------

† Missed approach requires use of RNAV or ATC radar monitoring. 1250

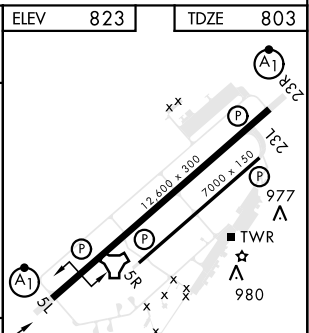
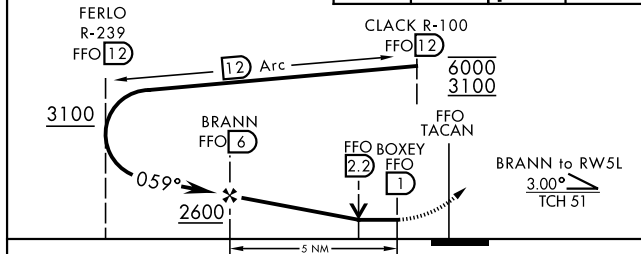


EC-2, 26 DEC 2024 to 23 JAN 2025

EC-2, 26 DEC 2024 to 23 JAN 2025

EMERG SAFE ALT 100 NM 3700

2000 ↑ FFO R-058	ARAKE FFO 5	3100 ↘	CLACK FFO 12	ELEV 823	TDZE 803
---------------------	----------------	-----------	-----------------	----------	----------



CATEGORY	A	B	C	D	E
S-5L *	1400/24	597 (600-½)	1400-1¼	597 (600-1¼)	
CIRCLING **	1400-1 577 (600-1)	1440-1 617 (700-1)	1560-2 737 (800-2)	1620-2½ 797 (800-2½)	1620-2¾ 797 (800-2¾)

HRL Rwy 5L-23R  
 MIRL Rwy 5R-23L

DAYTON, OHIO  
 Amdt 7 05JAN17

39° 50' N-84° 03' W

WRIGHT-PATTERSON AFB (KFFO)

# TACAN RWY 5L