

DAYTON, OHIO

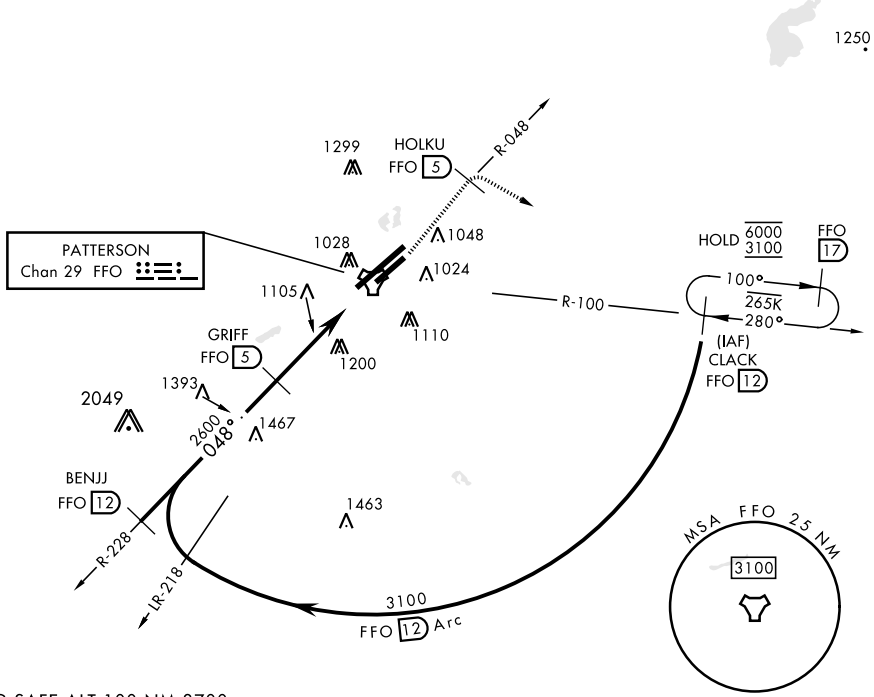
# TACAN RWY 5R

TACAN FFO Chan <b>29</b>	APCH CRS <b>048°</b>	Rwy ldg THRE Arprt Elev <b>7000 807 823</b>
--------------------------	----------------------	---

[USAF]

WRIGHT-PATTERSON AFB (KFFO)

<p>▼ * When Rwy 23R VGSJ inop, circling to Rwy 23R NA at night.</p>		<p>MISSED APPROACH: Climb to 2000 via FFO R-048 to HOLKU, turn right direct CLACK climbing to 3100 and hold.</p>	
<p>ATIS <b>124.475 269.9</b></p>	<p>COLUMBUS APP CON <b>118.85 269.275</b></p>	<p>PATTERSON TOWER <b>127.8 281.45</b></p>	<p>GND CON <b>121.8 335.8</b></p>



EC-2, 26 DEC 2024 to 23 JAN 2025

EC-2, 26 DEC 2024 to 23 JAN 2025

EMERG SAFE ALT 100 NM 3700

	2000 FFO R-048	HOLKU FFO 5	3100 CLACK FFO 12	ELEV 823	THRE 807
CATEGORY	A	B	C	D	E
S-5R	1500-1	687 (700-1)	1500-2	687 (700-2)	
CIRCLING*	1500-1	677 (700-1)	1560-2 737 (800-2)	1620-2½ 797 (800-2½)	1620-2¾ 797 (800-2¾)
				HIRL Rwy 5L-23R MIRL Rwy 5R-23L	

DAYTON, OHIO  
Amdt 5 05JAN17

39° 50'N-84° 03'W

WRIGHT-PATTERSON AFB (KFFO)

# TACAN RWY 5R