

DEL RIO, TEXAS

HI-ILS or LOC/DME Z RWY 13C

LOC I-DFL **110.3**
 APCH CRS **128°**

Rwy Idg **8852 8316 6571**
 TDZE **1082 1078 1077**
 Arprt Elev **1082**

[USAF]

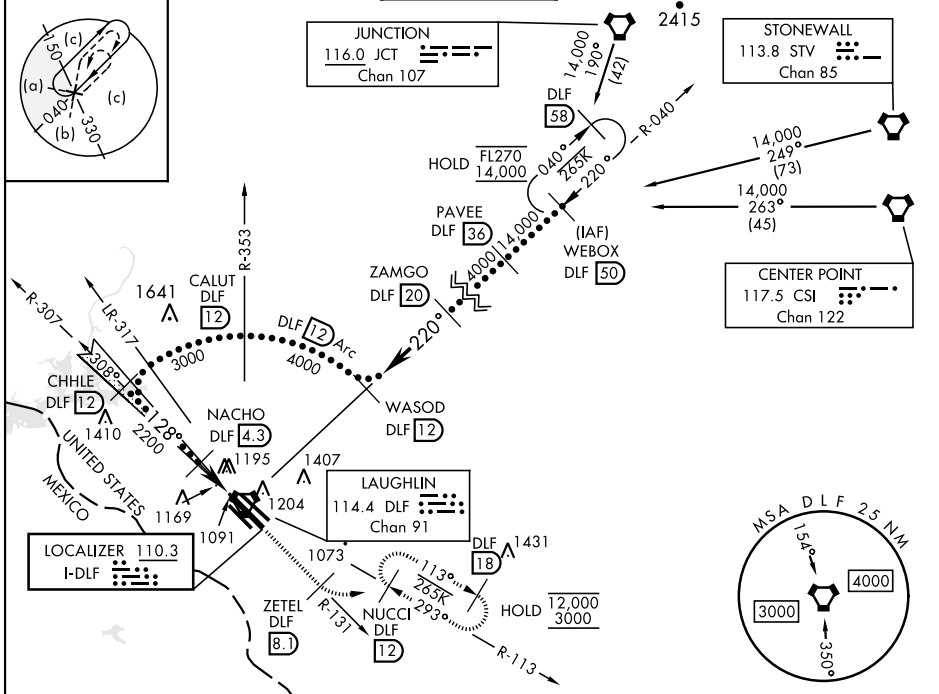
LAUGHLIN AFB (KDLF)

▼ * When ALS inop, increase RVR to 40 and vis to ¼ mile.
 ** When ALS inop, increase CAT AB RVR to 55 and vis to 1 mile, CAT CDE RVR to 50 and vis to 1 mile.
 *** Circling W of Rwy 13R-31L not authorized.

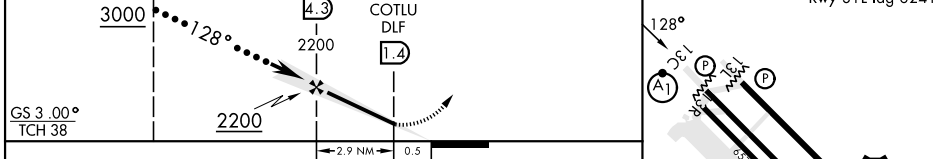
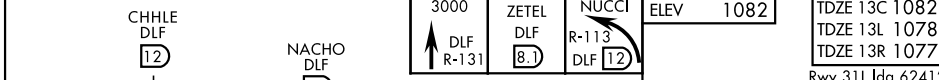


MISSED APPROACH: Climb to 3000 on DLF VORTAC R-131 to 8.1 DME (ZETEL), then turn left to intercept DLF R-113 to 12 DME (NUCCI) and hold.

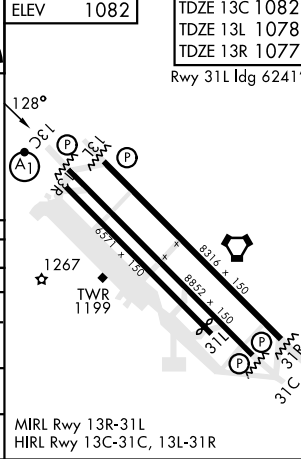
ATIS* 114.4 269.9	DEL RIO APP CON 119.6 259.1	TOWER* 125.2 307.375	GND CON 275.8	CLNC DEL 120.5 335.8
-----------------------------	---------------------------------------	--------------------------------	-------------------------	--------------------------------



EMERG SAFE ALT 100 NM 16,000



CATEGORY	A	B	C	D	E
S-ILS 13C *	1282/24		200	(200-½)	
S-LOC 13C **	1420/24	338 (400-½)	1420/26	338	(400-½)
SIDESTEP 13L	1440-1	362 (400-1)	1440-1½ 362 (400-1½)	1440-2	362 (400-2)
SIDESTEP 13R	1480-1	403 (400-1)	1480-1½ 403 (400-1½)	1480-2	403 (400-2)
CIRCLING ***	1500-1 418 (500-1)	1540-1 458 (500-1)	1700-1¾ 618(700-1¾)	1700-2	1740-2¼ 658(700-2¼)



DEL RIO, TEXAS
 Amdt 6 07SEP23

29°22'N-100°47'W

LAUGHLIN AFB (KDLF)

HI-ILS or LOC/DME Z RWY 13C

SC-3, 26 DEC 2024 to 23 JAN 2025

SC-3, 26 DEC 2024 to 23 JAN 2025