

DEL RIO, TEXAS

ILS or LOC/DME Y RWY 13C

LOC I-DLF 110.3	APCH CRS 128°	Rwy Idg 8852 8316 6571	13C 1082	13L 1078	13R 1077
		TDZE 1082	Arprt Elev 1082		

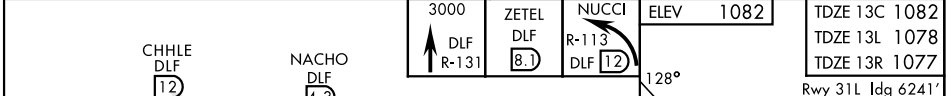
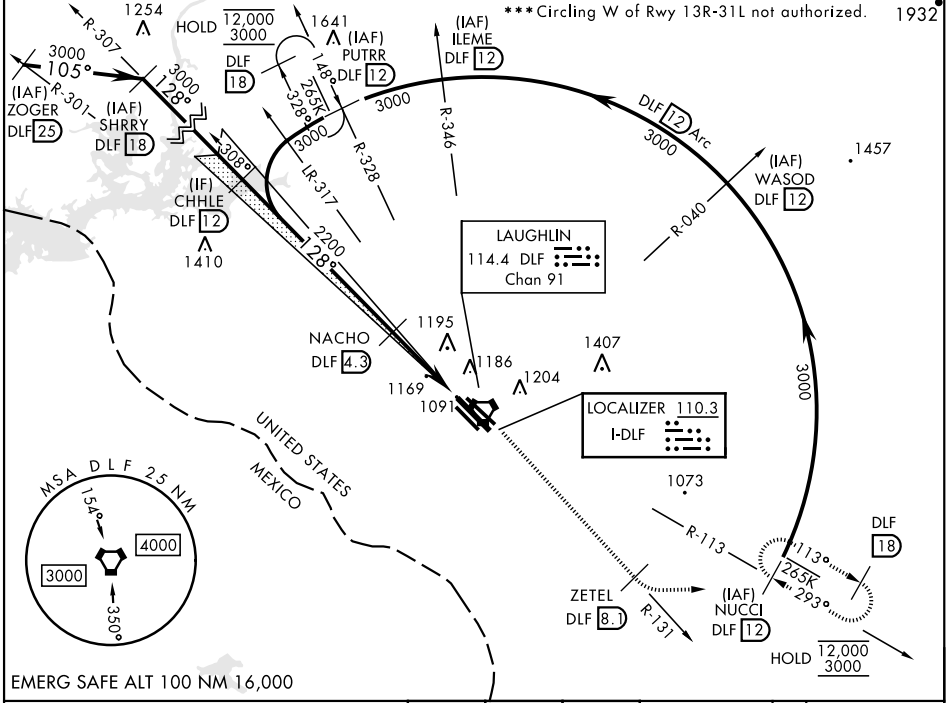
[USAF] LAUGHLIN AFB (KDLF)

▲ * When ALS inop, increase RVR to 40 and vis to 3/4 mile.
****** When ALS inop, increase CAT AB RVR to 55 and vis to 1 mile, CAT CDE RVR to 50 and vis to 1 mile.

ALS-F-1 **A1**

MISSED APPROACH: Climb to 3000 on DLF VORTAC R-131 to 8.1 DME (ZETEL), then turn left to intercept DLF R-113 to 12 DME (NUCCI) and hold.

ATIS ★ 114.4 269.9	DEL RIO APP CON 119.6 259.1	TOWER ★ 125.2 307.375	GND CON 275.8	CLNC DEL 120.5 335.8
------------------------------	---------------------------------------	---------------------------------	-------------------------	--------------------------------



ELEV	1082	TDZE 13C	1082		
		TDZE 13L	1078		
		TDZE 13R	1077		
		Rwy 31L Idg 6241'			
CATEGORY	A	B	C	D	E
S-ILS 13C*	1282/24		200	(200-1/2)	
S-LOC 13C**	1420/24	338 (400-1/2)	1420/26	338	(400-1/2)
SIDESTEP 13L	1440-1 362 (400-1)		1440-1 1/2 362(400-1 1/2)		1440-2 362 (400-2)
SIDESTEP 13R	1480-1 403 (400-1)		1480-1 1/2 403(400-1 1/2)		1480-2 403 (400-2)
CIRCLING ***	1500-1 418 (500-1)	1540-1 458 (500-1)	1700-1 3/4 618(700-1 3/4)	1700-2 618 (700-2)	1740-2 1/4 658 (700-2 1/4)
	MIRL Rwy 13R-31L				
	HRL Rwy 13C-31C, 13L-31R				

DEL RIO, TEXAS 29°22'N-100°47'W LAUGHLIN AFB (KDLF)

Amtd 6 05OCT23

ILS or LOC/DME Y RWY 13C

SC-3, 26 DEC 2024 to 23 JAN 2025

SC-3, 26 DEC 2024 to 23 JAN 2025