

DEL RIO, TEXAS

RNAV (GPS) B

APCH CRS 340°	Rwy Idg TDZE Arprt Elev	N/A N/A 1082
-------------------------	-------------------------------	---------------------------

- (USAF)

LAUGHLIN AFB (KDLF)

RNP APCH - GPS	MISSED APPROACH: Climbing left turn to 4000 direct ZOBUS, cross SCIFI at 4000, expect radar vectors.
RADAR required	
* Circling not authorized in sector NE of Rwy 13R-31L.	

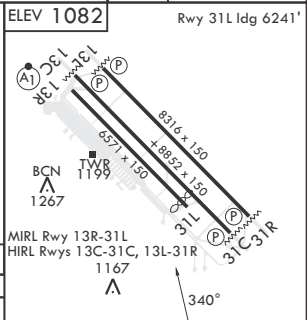
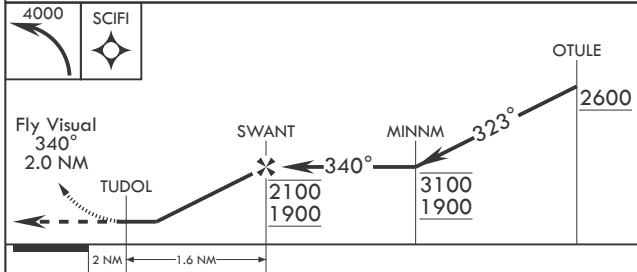
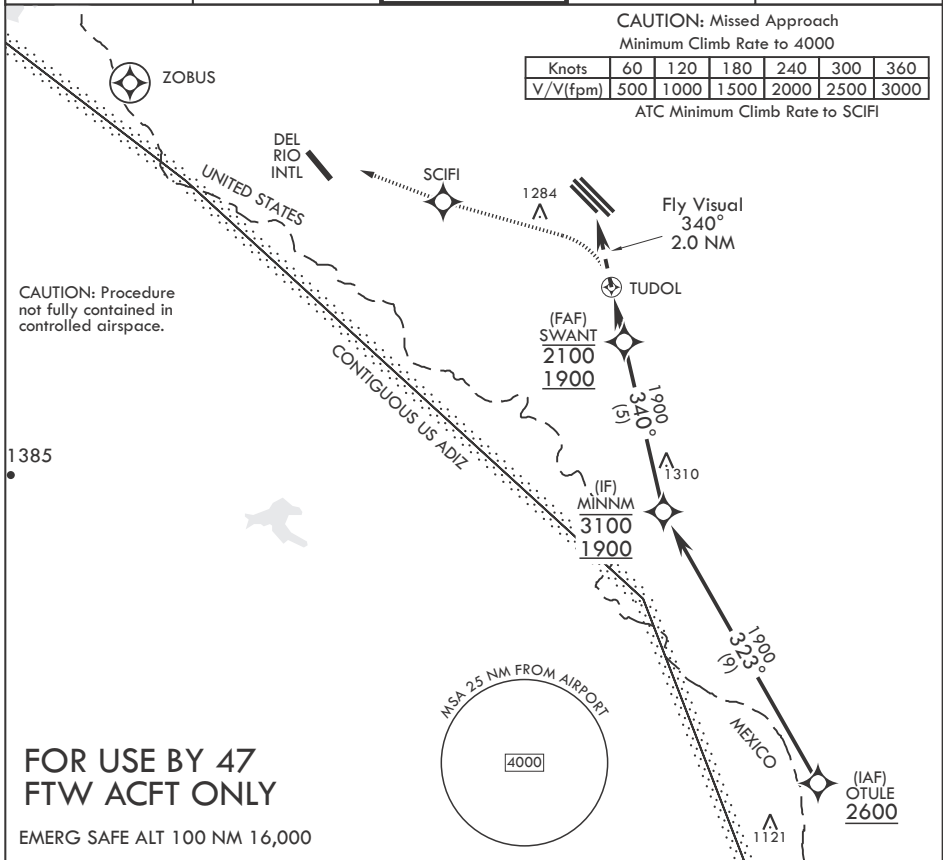
ATIS* 114.4 269.9	DEL RIO APP CON 119.6 259.1	TOWER* 125.2 307.375	GND CON 275.8	CLNC DEL 120.5 335.8
-----------------------------	---------------------------------------	--------------------------------	-------------------------	--------------------------------

CAUTION: Missed Approach

Minimum Climb Rate to 4000

Knots	60	120	180	240	300	360
V/V(fpm)	500	1000	1500	2000	2500	3000

ATC Minimum Climb Rate to SCIFI



CATEGORY	A	B	C	D
CIRCLING*	1600-3	518 (1000-3)	NA	NA

DEL RIO, TEXAS

29°22'N - 100°47'W

LAUGHLIN AFB (KDLF)

Amdt 6 07SEP23

RNAV (GPS) B

SC-3, 26 DEC 2024 to 23 JAN 2025

SC-3, 26 DEC 2024 to 23 JAN 2025