

DEL RIO, TEXAS

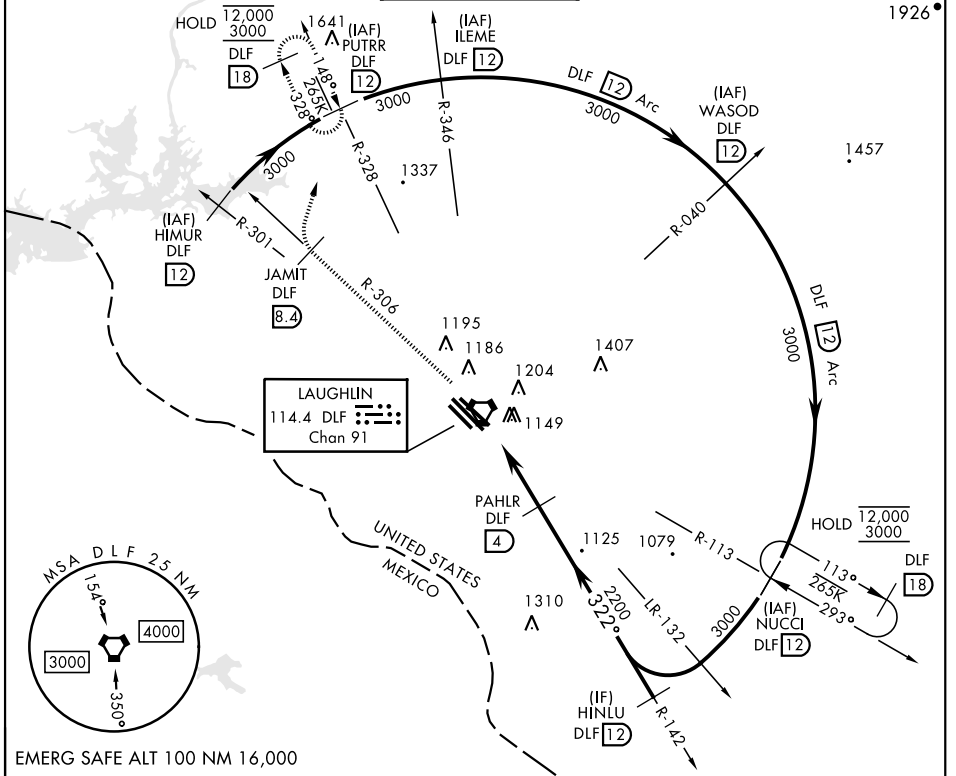
24305

VOR/DME RWY 31C

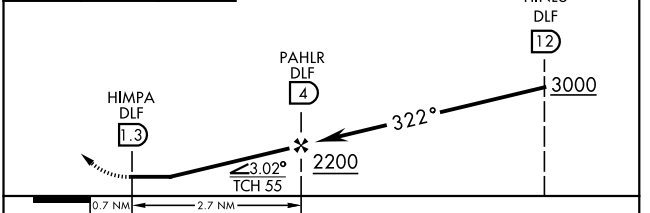
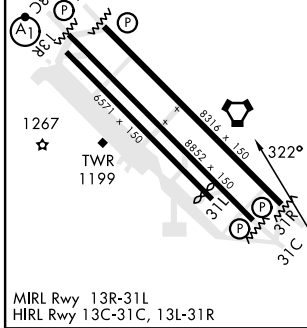
VORTAC DLF 114.4 Chan 91	APCH CRS 322°	Rwy Idg TDZE Arprt Elev 8852 1079 1082	[USAF]	LAUGHLIN AFB (KDLF)
----------------------------------------------	-------------------------	----------------------------------------------------------------------------	--------	---------------------

▼ *Circling not authorized in sector SW of Rwy 13R-31L.
MISSED APPROACH: Climb to 3000 on DLF VORTAC R-306 to 8.4 DME (JAMIT), then turn right to intercept DLF R-328 to 12 DME (PUTRR), and hold.

ATIS ★ 114.4 269.9	DEL RIO APP CON 119.6 259.1	TOWER ★ 125.2 307.375	GND CON 275.8	CLNC DEL 120.5 335.8
------------------------------	---------------------------------------	---------------------------------	-------------------------	--------------------------------



ELEV 1082	TDZE 1079	3000	JAMIT R-306 DLF 8.4	PUTRR R-328 DLF 12
Rwy 31L Idg 6241'				



CATEGORY	A	B	C	D	E
S-31C	1420-1		341	(400-1)	
C CIRCLING*	1500-1 418 (500-1)	1540-1 458 (500-1)	1700-1½ 618(700-1¾)	1700-2 618 (700-2)	1740-2¼ 658(700-2¼)

DEL RIO, TEXAS 29°22'N-100°47'W LAUGHLIN AFB (KDLF)

Amtd 4 20APR23

VOR/DME RWY 31C

SC-3, 26 DEC 2024 to 23 JAN 2025

SC-3, 26 DEC 2024 to 23 JAN 2025